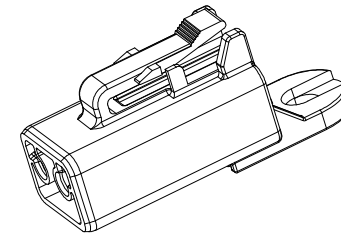
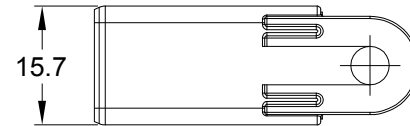
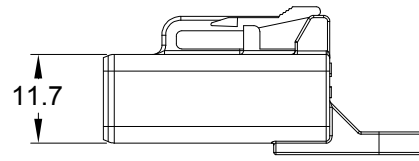
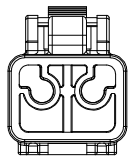
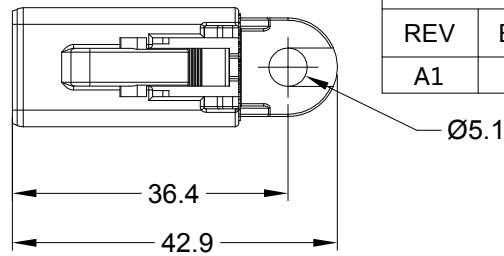


## REVISIONS

REV	ECO	DESCRIPTION	DATE	BY	APPR
A1	--	RELEASE NEW PRODUCT	19/OCT/20	LOUIE	TOMMY



## NOTES: UNLESS OTHERWISE SPECIFIED

1. MATERIAL: THERMOPLASTIC, COLOR: GREY
2. RoHS COMPLIANT
3. MOISTURE RESISTANCE:  
IP68 ( 1M OF WATER FOR A PERIOD OF 24 HOURS , MATED CONDITION )  
IP69K ( MATED CONDITION )
4. TEMPERATURE RANGE: -55°C~125°C
5. USE WITH CONNECTORS ATP04-2P\*  
( \* = MODIFICATIONS AND/OR COLORS )
6. ALL DIMENSIONS ARE FOR REFERENCE USE ONLY.

	ATP04-2P-CAP		
	PART NUMBER	DESCRIPTION	ITEM
QUANTITY	MATERIALS LIST		
<b>UNLESS OTHERWISE SPECIFIED</b> 1) All dimensions are in metric(mm). 2) Tolerances are as follows: 1 PL DEC ±0.30 2 PL DEC ±0.15 3 PL DEC ±0.08 <div>3) Note reference = <div>x</div></div> <div>Fractions ±1/64 Angles ±1°</div>		<b>SIGNATURES</b> DRAWN: LOUIE.YIN CHECKED: ORION.LI ENGINEER: APPROVAL: TOMMY.XIE CUSTOMER:  THIS DRAWING IS SUPPLIED FOR INFORMATION ONLY. DESIGN FEATURES, SPECIFICATIONS AND PERFORMANCE DATA SHOWN HEREON ARE THE PROPERTY OF THE AMPHENOL CORPORATION. NO RIGHTS OF REPRODUCTION ARE IMPLIED. ALL DIMENSIONS ARE SUBJECT TO NORMAL MANUFACTURING VARIATIONS.	<b>DATE</b> 19/OCT/20 20/OCT/20  21/OCT/20
MATERIAL SPECIFICATIONS:		<div>Amphenol</div> <div>Sine Systems - www.amphenol-sine.com 44724 Morley Drive Clinton Township, MI 48036</div>	
PROCESS SPECIFICATIONS:		2 POS,DUST CAP FOR RECEPTACLE, ATP SERIES	
NEXT ASS'Y:		<div>SIZE A</div> <div>SCALE: NONE</div>	<div>TYPE C-</div> <div>DWG NO: ATP04-2P-CAP</div> <div>REVISION A1</div>
		SHEET 1	OF 1

# Mouser Electronics

Authorized Distributor

Click to View Pricing, Inventory, Delivery & Lifecycle Information:

[Amphenol:](#)

[ATP04-2P-CAP](#)