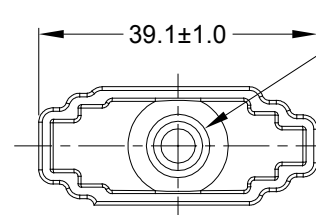
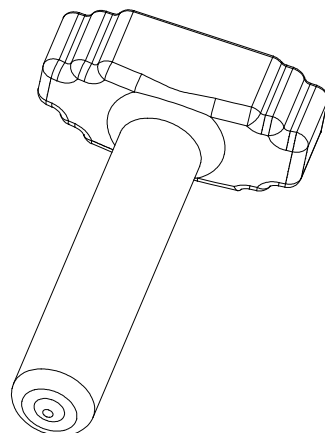


REVISIONS					
REV	ECO	DESCRIPTION	DATE	BY	APPR
A1	-	RELEASE NUMBER	13MAR20	BROOK	TOMMY



Ø8.9±1.0
CABLE JACKET AREA



PART NUMBER CHART	
COLOR	PART NUMBER
GREY	ATM8S-BT
BLACK	ATM8S-BT-BK
YELLOW	ATM8S-BT-YW

NOTES: UNLESS OTHERWISE SPECIFIED

- THIS PART IS USED ON ATM06-08S PLUG WITH ANY MODIFICTION THAT DOES NOT INCLUDE AN END CAP.
- TEMPERATURE RATING : -29°C TO +100°C [-20°F TO +212°F]
- ALL DIMENSIONS ARE FOR REFERENCE USE ONLY.

SEE PART NUMBER CHART		REF : DTM8S-BT , DTM8S-BT-BK , DTM8S-BT-YW	
PART NUMBER		DESCRIPTION	
QUANTITY	MATERIALS LIST		
<div>UNLESS OTHERWISE SPECIFIED</div> <div>1) All dimensions are in metric(mm).</div> <div>2) Tolerances are as follows:</div> <div>1 PL DEC ±0.30</div> <div>2 PL DEC ±0.15</div> <div>3 PL DEC ±0.08</div> <div>3) Note reference = </div>		<div>SIGNATURES</div> <div>DATE</div> <div>DRAWN: BROOK.DING</div> <div>13MAR20</div> <div>CHECKED: ORION.LI</div> <div>16MAR20</div> <div>ENGINEER:</div> <div>APPROVAL: TOMMY.XIE</div> <div>17MAR20</div> <div>CUSTOMER:</div> <div>THIS DRAWING IS SUPPLIED FOR INFORMATION ONLY. DESIGN FEATURES, SPECIFICATIONS AND PERFORMANCE DATA SHOWN HEREON ARE THE PROPERTY OF THE AMPHENOL CORPORATION. NO RIGHTS OF REPRODUCTION ARE IMPLIED. ALL DIMENSIONS ARE SUBJECT TO NORMAL MANUFACTURING VARIATIONS.</div>	<div>Amphenol</div> <div>Sine Systems - www.amphenol-sine.com</div> <div>44724 Morley Drive</div> <div>Clinton Township, MI 48036</div> <div>BOOT ,ATM ,8 WAY ,PLUG</div> <div><div>SIZE</div><div>A</div><div>TYPE</div><div>C-</div><div>DWG NO:</div><div>ATM8S-BT-XX</div><div>REVISION</div><div>A1</div></div> <div><div>SCALE:</div><div>NONE</div><div>SHEET</div><div>1</div><div>OF</div><div>1</div></div>
MATERIAL SPECIFICATIONS:			
PVC			
PROCESS SPECIFICATIONS:			
NEXT ASSY:			

Mouser Electronics

Authorized Distributor

Click to View Pricing, Inventory, Delivery & Lifecycle Information:

[Amphenol:](#)

[ATM8S-BT](#)