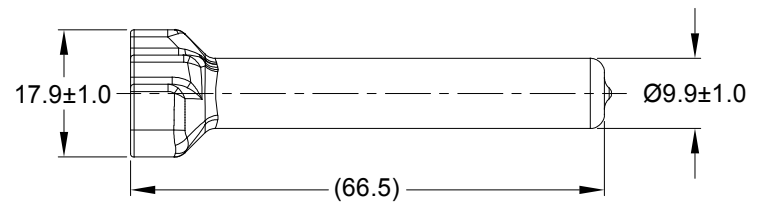
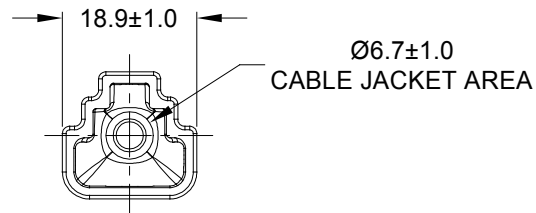
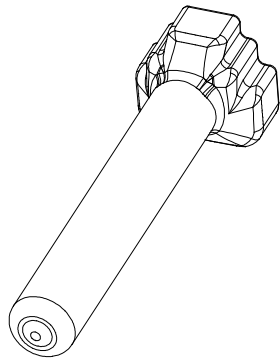


REVISIONS					
REV	ECO	DESCRIPTION	DATE	BY	APPR
A1	-	RELEASE NUMBER	13MAR20	BROOK	TOMMY



PART NUMBER CHART	
COLOR	PART NUMBER
GREY	ATM3S-BT
BLACK	ATM3S-BT-BK
YELLOW	ATM3S-BT-YW

NOTES: UNLESS OTHERWISE SPECIFIED

- THIS PART IS USED ON ATM06-3S PLUG WITH ANY MODIFICTION THAT DOES NOT INCLUDE AN END CAP.
- TEMPERATURE RATING : -29°C TO +100°C [-20°F TO +212°F]
- ALL DIMENSIONS ARE FOR REFERENCE USE ONLY.

	SEE PART NUMBER CHART		REF : DTM3S-BT , DTM3S-BT-BK , DTM3S-BT-YW						
	PART NUMBER		DESCRIPTION			ITEM			
QUANTITY		MATERIALS LIST							
<div>UNLESS OTHERWISE SPECIFIED</div> <div>1) All dimensions are in metric(mm).</div> <div>2) Tolerances are as follows:</div> <div>1 PL DEC ± 0.30</div> <div>2 PL DEC ± 0.15</div> <div>3 PL DEC ± 0.08</div> <div>3) Note reference = </div>		<div>SIGNATURES</div> <div>DRAWN: BROOK.DING</div> <div>CHECKED: ORION.LI</div> <div>ENGINEER:</div> <div>APPROVAL: TOMMY.XIE</div> <div>CUSTOMER:</div>		<div>DATE</div> <div>13MAR20</div> <div>16MAR20</div> <div></div> <div>17MAR20</div>		<div>Amphenol</div> <div>Sine Systems - www.amphenol-sine.com</div> <div>44724 Morley Drive</div> <div>Clinton Township, MI 48036</div> <div>BOOT, ATM, 3 WAY, PLUG</div>			
MATERIAL SPECIFICATIONS:									
PVC									
PROCESS SPECIFICATIONS:									
NEXT ASSY:									
		THIS DRAWING IS SUPPLIED FOR INFORMATION ONLY. DESIGN FEATURES, SPECIFICATIONS AND PERFORMANCE DATA SHOWN HEREON ARE THE PROPERTY OF THE AMPHENOL CORPORATION. NO RIGHTS OF REPRODUCTION ARE IMPLIED. ALL DIMENSIONS ARE SUBJECT TO NORMAL MANUFACTURING VARIATIONS.		SIZE A C-		TYPE DWG NO:	ATM3S-BT-XX		REVISION A1
				SCALE: NONE				SHEET 1	OF 1

Mouser Electronics

Authorized Distributor

Click to View Pricing, Inventory, Delivery & Lifecycle Information:

[Amphenol:](#)

[ATM3S-BT-YW](#)