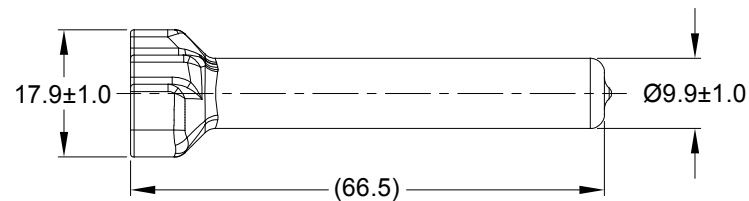
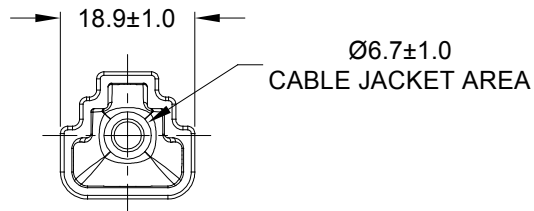
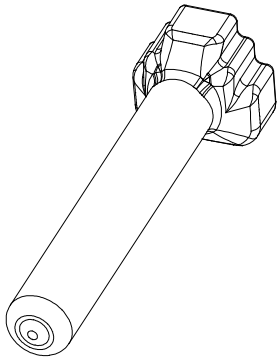



REVISIONS					
REV	ECO	DESCRIPTION	DATE	BY	APPR
A1	-	RELEASE NUMBER	13MAR20	BROOK	TOMMY



PART NUMBER CHART	
COLOR	PART NUMBER
GREY	ATM3S-BT
BLACK	ATM3S-BT-BK
YELLOW	ATM3S-BT-YW

NOTES: UNLESS OTHERWISE SPECIFIED

- THIS PART IS USED ON ATM06-3S PLUG WITH ANY MODIFICTION THAT DOES NOT INCLUDE AN END CAP.
- TEMPERATURE RATING : -29°C TO +100°C [-20°F TO +212°F]
- ALL DIMENSIONS ARE FOR REFERENCE USE ONLY.

SEE PART NUMBER CHART		REF : DTM3S-BT, DTM3S-BT-BK, DTM3S-BT-YW			
PART NUMBER		DESCRIPTION			ITEM
QUANTITY	MATERIALS LIST				
<div>UNLESS OTHERWISE SPECIFIED</div> <div>1) All dimensions are in metric(mm). 2) Tolerances are as follows: 1 PL DEC ±0.30 2 PL DEC ±0.15 3 PL DEC ±0.08</div> <div>Fractions ±1/64 Angles ±1°</div> <div>3) Note reference = </div>		SIGNATURES		DATE	<div>Amphenol</div> <div>Sine Systems - www.amphenol-sine.com 44724 Morley Drive Clinton Township, MI 48036</div>
		DRAWN: BROOK.DING		13MAR20	
		CHECKED: ORION.LI		16MAR20	
		ENGINEER:			
		APPROVAL: TOMMY.XIE		17MAR20	
MATERIAL SPECIFICATIONS:		CUSTOMER:		<div>BOOT, ATM, 3 WAY, PLUG</div>	
PVC					
PROCESS SPECIFICATIONS:		THIS DRAWING IS SUPPLIED FOR INFORMATION ONLY. DESIGN FEATURES, SPECIFICATIONS AND PERFORMANCE DATA SHOWN HEREON ARE THE PROPERTY OF THE AMPHENOL CORPORATION. NO RIGHTS OF REPRODUCTION ARE IMPLIED. ALL DIMENSIONS ARE SUBJECT TO NORMAL MANUFACTURING VARIATIONS.			
NEXT ASSY:		SIZE TYPE DWG NO:			
		A C- ATM3S-BT-XX			
		SCALE: NONE		REVISION	
				A1	
				SHEET 1 OF 1	

Mouser Electronics

Authorized Distributor

Click to View Pricing, Inventory, Delivery & Lifecycle Information:

[Amphenol:](#)

[ATM3S-BT-BK](#)