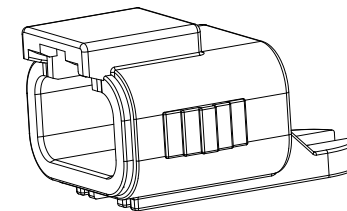
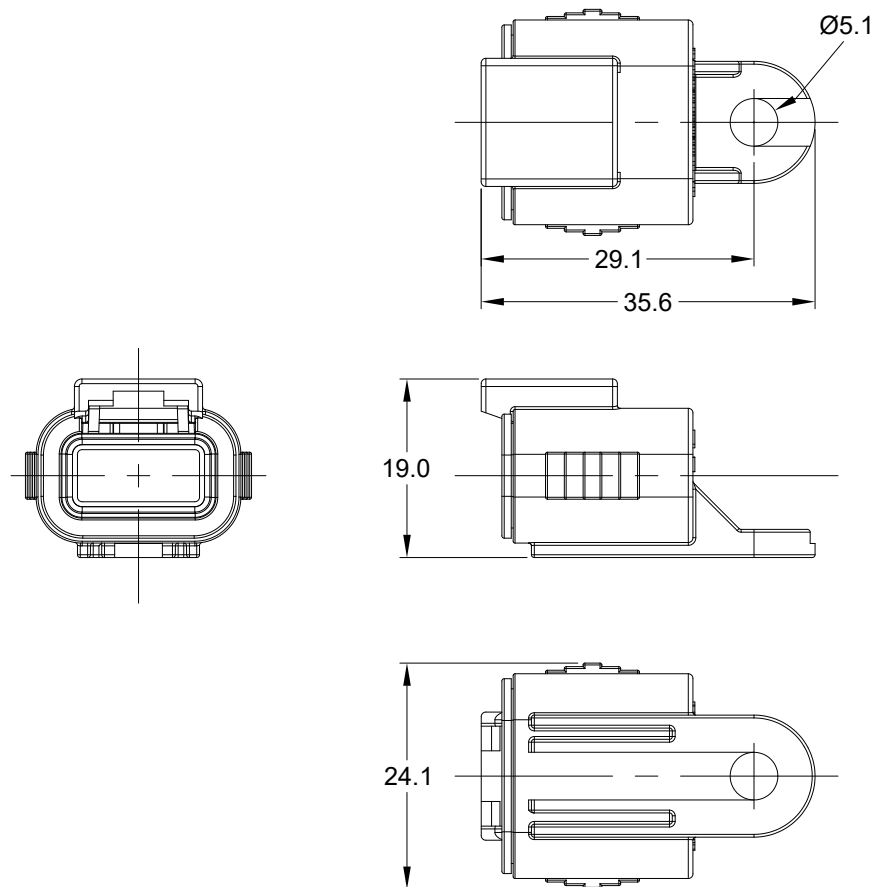



REVISIONS					
REV	ECO	DESCRIPTION	DATE	BY	APPR
A1	--	RELEASE NEW PRODUCT	01-SEP-20	Seven	TOMMY
A2	--	ADDED NEW SLEEVE INSERT CALLOUT	10-31-2024	RO	TZ



NOTES: UNLESS OTHERWISE SPECIFIED

1. MATERIAL: THERMOPLASTIC, COLOR: GREY
SLEEVE INSERT: BLACK
2. RoHS COMPLIANT
3. MOISTURE RESISTANCE: IP68 (1M OF WATER FOR
A PERIOD OF 24 HOURS , MATED CONDITION)
4. TEMPERATURE RANGE: -55°C~125°C
5. USE WITH CONNECTORS ATM06-3S*
(= MODIFICATIONS AND/OR COLORS)
6. ALL DIMENSIONS ARE FOR REFERENCE USE ONLY.

	ATM06-3S-CAP		
	PART NUMBER	DESCRIPTION	
QUANTITY	MATERIALS LIST		
UNLESS OTHERWISE SPECIFIED		SIGNATURES	
1) All dimensions are in metric(mm).		DATE	
2) Tolerances are as follows:		DRAWN: SEVEN.Mao	
2 PL DEC ±0.30		01SEP20	
1 PL DEC ±0.15		CHECKED: ORION.LI	
3 PL DEC ±0.08		02SEP20	
3) Note reference =		ENGINEER:	
		APPROVAL: TOMMY.XIE	
		02SEP20	
MATERIAL SPECIFICATIONS:		CUSTOMER:	
PROCESS SPECIFICATIONS:		THIS DRAWING IS SUPPLIED FOR	
NEXT ASSY:		INFORMATION ONLY. DESIGN FEATURES,	
		SPECIFICATIONS AND PERFORMANCE DATA	
		SHOWN HEREON ARE THE PROPERTY OF	
		THE AMPHENOL CORPORATION. NO RIGHTS	
		OF REPRODUCTION ARE IMPLIED. ALL	
		DIMENSIONS ARE SUBJECT TO NORMAL	
		MANUFACTURING VARIATIONS.	
		Amphenol	
		Sine Systems - www.amphenol-sine.com	
		44724 Morley Drive	
		Clinton Township, MI 48036	
		3 POS,DUST CAP FOR PLUG,	
		ATM SERIES	
		SIZE	TYPE
		A	C-
		DWG NO: ATM06-3S-CAP	
		REVISION	
		A2	
		SCALE: NONE	
		SHEET 1 OF 1	

Mouser Electronics

Authorized Distributor

Click to View Pricing, Inventory, Delivery & Lifecycle Information:

[Amphenol:](#)

[ATM06-3S-CAP](#)