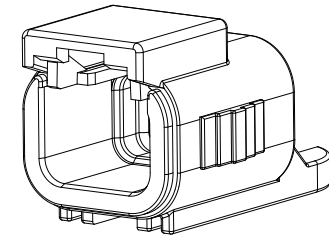
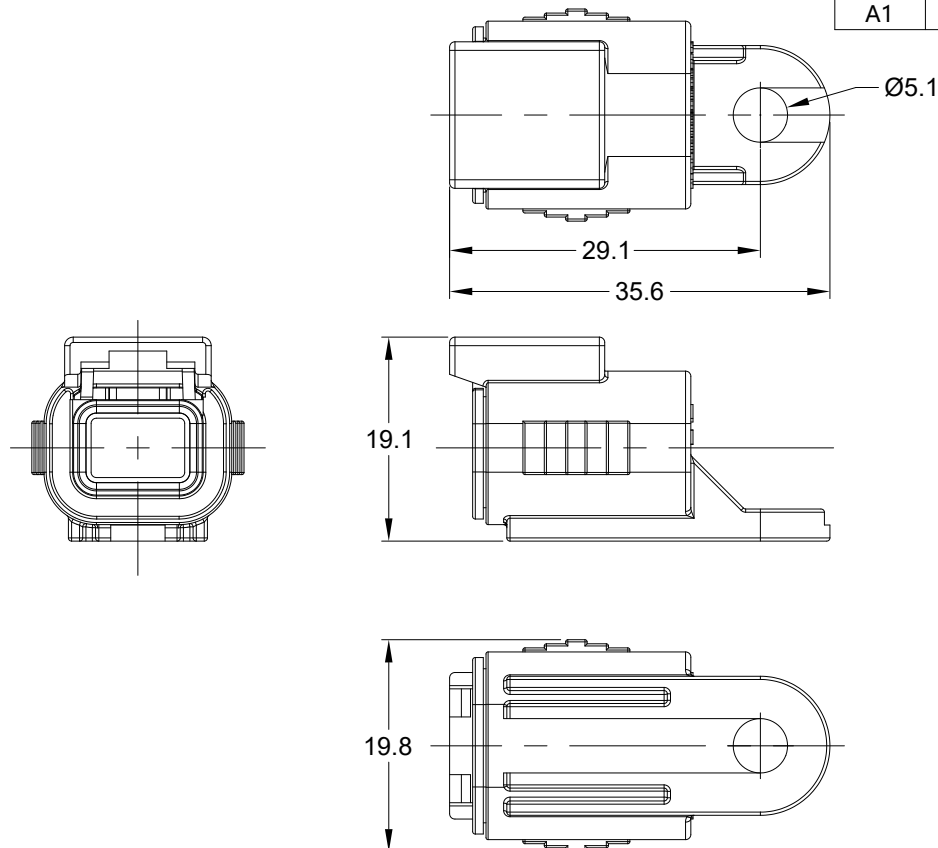


REVISIONS					
REV	ECO	DESCRIPTION	DATE	BY	APPR
A1	--	RELEASE NEW PRODUCT	01-SEP-20	SEVEN	TOMMY



NOTES: UNLESS OTHERWISE SPECIFIED

1. MATERIAL: THERMOPLASTIC, COLOR: GREY
2. RoHS COMPLIANT
3. MOISTURE RESISTANCE: IP68 (1M OF WATER FOR A PERIOD OF 24 HOURS , MATED CONDITION)
4. TEMPERATURE RANGE: -55°C~125°C
5. USE WITH CONNECTORS ATM06-2S*
(* = MODIFICATIONS AND/OR COLORS)
6. ALL DIMENSIONS ARE FOR REFERENCE USE ONLY.

	ATM06-2S-CAP			
	PART NUMBER		DESCRIPTION	
ITEM				
QUANTITY	MATERIALS LIST			
<div>UNLESS OTHERWISE SPECIFIED</div> <div>1) All dimensions are in metric(mm).</div> <div>2) Tolerances are as follows:</div> <div>1 PL DEC ±0.30</div> <div>2 PL DEC ±0.15</div> <div>3 PL DEC ±0.08</div> <div>3) Note reference =</div> <div><div>X</div></div>		<div>SIGNATURES</div> <div>SEVEN.MAO</div> <div>CHECKED: ORION.LI</div> <div>ENGINEER:</div> <div>APPROVAL: TOMMY.XIE</div> <div>CUSTOMER:</div>		<div>DATE</div> <div>01SEP20</div> <div>02SEP20</div> <div></div> <div>02SEP20</div>
MATERIAL SPECIFICATIONS:		<div>Amphenol</div> <div>Sine Systems - www.amphenol-sine.com</div> <div>44724 Morley Drive</div> <div>Clinton Township, MI 48036</div>		
PROCESS SPECIFICATIONS:		<div>2 POS,DUST CAP FOR PLUG,</div> <div>ATM,SERIES</div>		
NEXT ASSY:		<div>SIZE</div> <div>A</div>	<div>TYPE</div> <div>C-</div>	<div>DWG NO:</div> <div>ATM06-2S-CAP</div>
		<div>SCALE</div> <div>NONE</div>	<div>REVISION</div> <div>A1</div>	
		<div>SHEET</div> <div>1</div> <div>OF</div> <div>1</div>		

Amphenol

Sine Systems - www.amphenol-sine.com
44724 Morley Drive
Clinton Township, MI 48036

2 POS,DUST CAP FOR PLUG,
ATM,SERIES

Mouser Electronics

Authorized Distributor

Click to View Pricing, Inventory, Delivery & Lifecycle Information:

[Amphenol:](#)

[ATM06-2S-CAP](#)