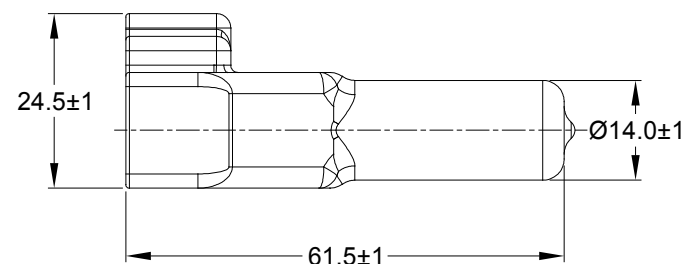
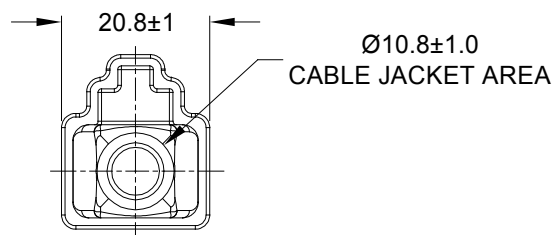
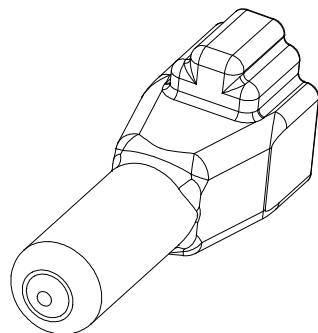


REVISIONS					
REV	ECO	DESCRIPTION	DATE	BY	APPR
A1	-	RELEASE NUMBER	28AUG19	BROOK	TOMMY



PART NUMBER CHART	
COLOR	PART NUMBER
GREY	AT4S-BT
BLACK	AT4S-BT-BK
YELLOW	AT4S-BT-YW

# NOTES: UNLESS OTHERWISE SPECIFIED

- THIS PART IS USED ON AT06-4S PLUG WITH ANY MODIFICTION THAT DOES NOT INCLUDE AN END CAP.
- TEMPERATURE RATING : -29°C TO +100°C [-20°F TO +212°F]
- ALL DIMENSIONS ARE FOR REFERENCE USE ONLY.

SEE PART NUMBER CHART		REF: DT4S-BT, DT4S-BT-BK, DT4S-BT-YW					
PART NUMBER		DESCRIPTION			ITEM		
QUANTITY	MATERIALS LIST						
<div>UNLESS OTHERWISE SPECIFIED</div> <div>1) All dimensions are in metric(mm).</div> <div>2) Tolerances are as follows:</div> <div>1 PL DEC ±0.30</div> <div>2 PL DEC ±0.15</div> <div>3 PL DEC ±0.08</div> <div>3) Note reference =</div> <div><div>X</div></div>		<div>SIGNATURES</div> <div>DRAWN: BROOK.DING</div> <div>CHECKED: ORION.LI</div> <div>ENGINEER:</div> <div>APPROVAL: TOMMY.XIE</div> <div>CUSTOMER:</div> <div>THIS DRAWING IS SUPPLIED FOR INFORMATION ONLY. DESIGN FEATURES, SPECIFICATIONS AND PERFORMANCE DATA SHOWN HEREON ARE THE PROPERTY OF THE AMPHENOL CORPORATION. NO RIGHTS OF REPRODUCTION ARE IMPLIED. ALL DIMENSIONS ARE SUBJECT TO NORMAL MANUFACTURING VARIATIONS.</div>		<div>DATE</div> <div>28AUG19</div> <div>28AUG19</div> <div></div> <div>28AUG19</div>		<div>Amphenol</div> <div>Sine Systems - <a href="http://www.amphenol-sine.com">www.amphenol-sine.com</a></div> <div>44724 Morley Drive</div> <div>Clinton Township, MI 48036</div>	
MATERIAL SPECIFICATIONS:				BOOT ,AT ,4 WAY ,PLUG			
PVC							
PROCESS SPECIFICATIONS:				SIZE TYPE DWG NO: A C- AT4S-BT-XX			
NEXT ASSY:				REVISION A1			
		SCALE: NONE		SHEET 1 OF 1			

# Mouser Electronics

Authorized Distributor

Click to View Pricing, Inventory, Delivery & Lifecycle Information:

[Amphenol:](#)

[AT2S-BT](#)