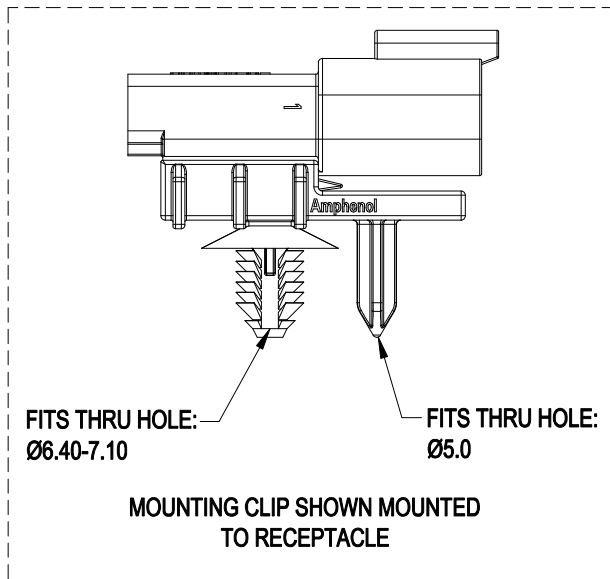
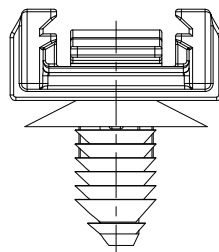
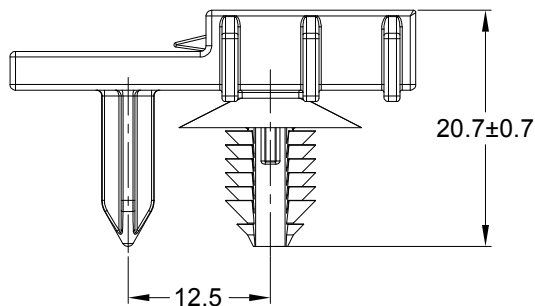
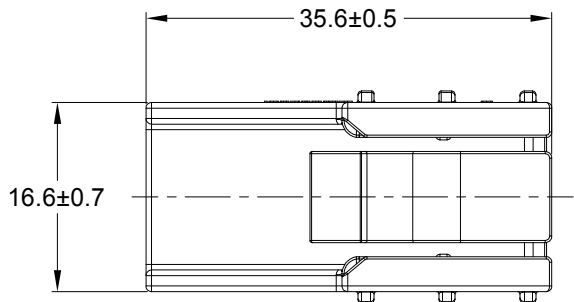


| REVISIONS | | | | | |
|-----------|-----|----------------|-----------|--------|-------|
| REV | ECO | DESCRIPTION | DATE | BY | APPR |
| A1 | — | NEW RELEASE | 14/MAR/18 | ROOKIE | TOMMY |
| A2 | — | UPDATE DRAWING | 13/JAN/20 | ROOKIE | TOMMY |



NOTES: UNLESS OTHERWISE SPECIFIED

1. MATERIAL: THERMOPLASTIC; COLOR: BLACK

2. RoHS COMPLIANT

3. USE WITH CONNECTORS

A.AT04-2P*/3P*/4P*/6P*/12P*

B.ATM04-2P*~12P*

C.ATP04-2P*/4P*

D.ATV04*

E.ATHD04*

(* = MODIFICATIONS AND/OR COLORS)

4. ALL DIMENSIONS ARE FOR REFERENCE USE ONLY.

5. RECOMMENDED PANEL THICKNESS: 0.70 - 5.10.

6. CONNECTOR REMOVABLE FORCE: 50N Min.

| AT11-310-0205 | | REF:1011-310-0205 | |
|--|-------------|--|---|
| QUANTITY | PART NUMBER | DESCRIPTION | ITEM |
| MATERIALS LIST | | | |
| UNLESS OTHERWISE SPECIFIED 1) All dimensions are in metric(mm). 2) Tolerances are as follows: 1 PL DEC ±0.30 2 PL DEC ±0.15 3 PL DEC ±0.08 Fractions ±1/64 Angles ±1° 3) Note reference = | | SIGNATURES DRAWN: ROOKIE CHECKED: ORION ENGINEER: APPROVAL: TOMMY CUSTOMER: DATE: 13/JAN/20 DATE: 13/JAN/20 DATE: 13/JAN/20 | Amphenol Sine Systems - www.amphenol-sine.com 44724 Morley Drive Clinton Township, MI 48036 |
| MATERIAL SPECIFICATIONS: | | THIS DRAWING IS SUPPLIED FOR INFORMATION ONLY. DESIGN FEATURES, SPECIFICATIONS AND PERFORMANCE DATA SHOWN HEREON ARE THE PROPERTY OF THE AMPHENOL CORPORATION. NO RIGHTS OF REPRODUCTION ARE IMPLIED. ALL DIMENSIONS ARE SUBJECT TO NORMAL MANUFACTURING VARIATIONS. | |
| PROCESS SPECIFICATIONS: | | SIZE: A C- TYPE: NONE DWG NO: AT11-310-0205 REVISION: A2 | |
| NEXT ASSY: | | SCALE: NONE SHEET 1 OF 1 | |

Mouser Electronics

Authorized Distributor

Click to View Pricing, Inventory, Delivery & Lifecycle Information:

[Amphenol:](#)

[AT11-310-0205](#)