

TITLE: MOUNTING CLIP, AT 8 POS RECEPTACLE, PLASTIC, GRAY

DWG NO: AT11-027-0805

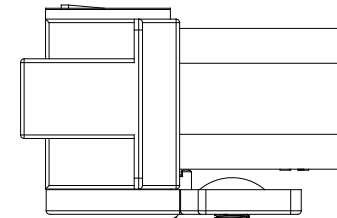
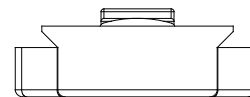
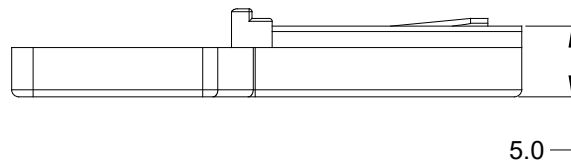
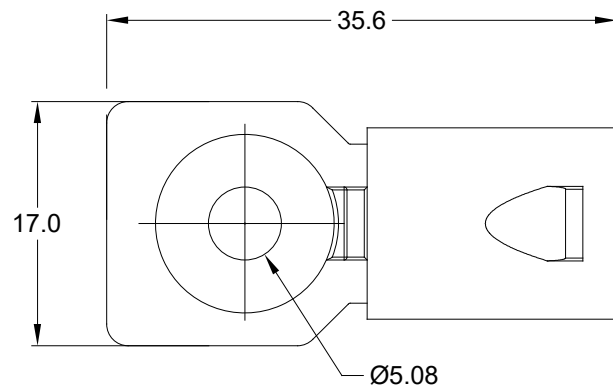
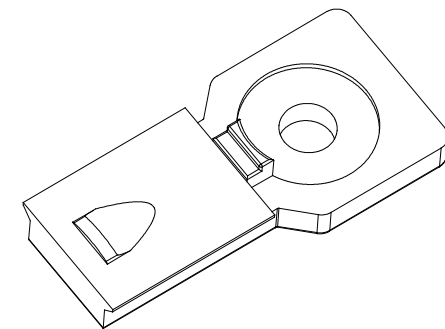
REV: A1

SH: 1

OF: 1

## REVISIONS

REV	ECO	DESCRIPTION	DATE	BY	APPR
A1	--	RELEASE NEW PRODUCT	06/SEP/19	ROOKIE	TOMMY

MOUNTING CLIP SHOWN  
MOUNTED TO RECEPTACLEFASTENER IS A SEPARATE PART  
AND WILL VARY PER  
MOUNTING REQUIREMENTS.  
SHOWN FOR REFERENCE ONLY.

## NOTES: UNLESS OTHERWISE SPECIFIED

1. MATERIAL: THERMOPLASTIC; COLOR: GRAY
2. RoHS COMPLIANT
3. USE WITH CONNECTORS  
A.AT04-08P\* ( \* = MODIFICATIONS AND/OR COLORS )
4. ALL DIMENSIONS ARE FOR REFERENCE USE ONLY.

	AT11-027-0805	REF:1011-027-0805	
QUANTITY	PART NUMBER	DESCRIPTION	ITEM
<b>MATERIALS LIST</b>			
<b>UNLESS OTHERWISE SPECIFIED</b> 1) All dimensions are in metric(mm). 2) Tolerances are as follows: 1 PL DEC ±0.30 2 PL DEC ±0.15 3 PL DEC ±0.08 3) Note reference =		<b>SIGNATURES</b> DRAWN: ROOKIE CHECKED: ORION ENGINEER: APPROVAL: TOMMY CUSTOMER: THIS DRAWING IS SUPPLIED FOR INFORMATION ONLY. DESIGN FEATURES, SPECIFICATIONS AND PERFORMANCE DATA SHOWN HEREON ARE THE PROPERTY OF THE AMPHENOL CORPORATION. NO RIGHTS OF REPRODUCTION ARE IMPLIED. ALL DIMENSIONS ARE SUBJECT TO NORMAL MANUFACTURING VARIATIONS.	<b>DATE</b> 06/SEP/19 06/SEP/19 06/SEP/19 06/SEP/19
<b>MATERIAL SPECIFICATIONS:</b>		<b>Amphenol</b> Sine Systems - www.amphenol-sine.com 44724 Morley Drive Clinton Township, MI 48036	
<b>PROCESS SPECIFICATIONS:</b>		<b>MOUNTING CLIP, AT 8 POS RECEPTACLE PLASTIC, GRAY</b>	
<b>NEXT ASSY:</b>		<b>SIZE</b> A	<b>REVISION</b> A1
		<b>TYPE</b> C-	
		<b>DWG NO:</b> AT11-027-0805	
		<b>SCALE:</b> NONE	
		<b>SHEET</b> 1	<b>OF</b> 1

# Mouser Electronics

Authorized Distributor

Click to View Pricing, Inventory, Delivery & Lifecycle Information:

[Amphenol:](#)

[AT11-027-0805](#)