

TITLE: MOUNTING CLIP,AT,ATM,ATP,PLASTIC,GRY

DWG NO: AT11-026-0205

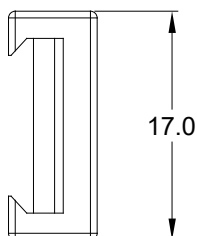
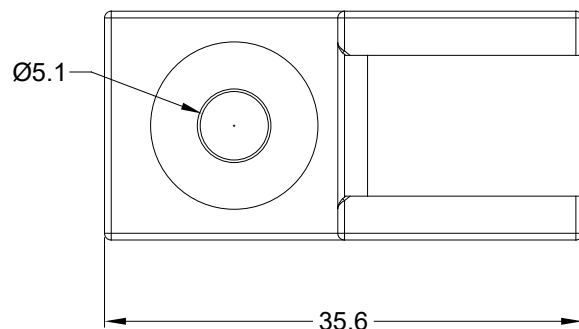
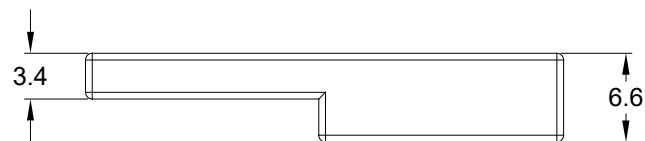
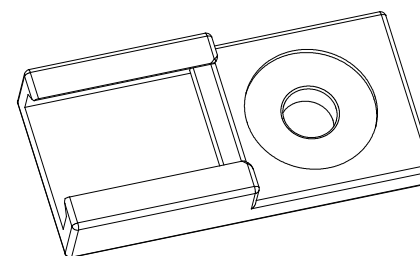
REV: A2

SH: 1

OF: 1

## REVISIONS

REV	ECO	DESCRIPTION	DATE	BY	APPR
A1	--	RELEASE NUMBER	14/DEC/17	ROOKIE	TOMMY
A2	C1060S	UPDATE DRAWING	05/JUL/19	JOE	TOMMY

MOUNTING CLIP SHOWN  
MOUNTED TO RECEPTACLEFASTENER IS A SEPARATE  
PART AND WILL VARY PER  
MOUNTING  
REQUIREMENTS. SHOWN  
FOR REFERENCE ONLY.

## NOTES: UNLESS OTHERWISE SPECIFIED

1. MATERIAL: THERMOPLASTIC; COLOR: GREY

2. RoHS COMPLIANT

3. USE WITH CONNECTORS

A.AT04-2P\*/3P\*/4P\*/6P\*/12P\*

B.ATM04-2P\*~12P\*

C.ATP04-2P\*/4P\*

D.ATV04-\*

E.ATHD04-\*

(\* = MODIFICATIONS AND/OR COLORS )

4. ALL DIMENSIONS ARE FOR REFERENCE USE ONLY.

AT11-026-0205		REF: 011-026-0205			
QUANTITY	PART NUMBER	DESCRIPTION			ITEM
<b>MATERIALS LIST</b>					
<b>UNLESS OTHERWISE SPECIFIED</b> 1) All dimensions are in metric(mm). 2) Tolerances are as follows: 1 PL DEC ±0.30 2 PL DEC ±0.15 3 PL DEC ±0.08 3) Note reference =		<b>SIGNATURES</b> DRAWN: JOE.SONG CHECKED: ORION.LI ENGINEER: APPROVAL: TOMMY.XIE CUSTOMER:		<b>DATE</b> 05/JUL/19 05/JUL/19 05/JUL/19 05/JUL/19	
MATERIAL SPECIFICATIONS:		<b>Amphenol</b> Sine Systems - www.amphenol-sine.com 44724 Morley Drive Clinton Township, MI 48036 <b>MOUNTING CLIP,AT,ATM,ATP,PLASTIC,GRY</b>			
PROCESS SPECIFICATIONS:					
NEXT ASSY:					
		THIS DRAWING IS SUPPLIED FOR INFORMATION ONLY. DESIGN FEATURES, SPECIFICATIONS AND PERFORMANCE DATA SHOWN HEREON ARE THE PROPERTY OF THE AMPHENOL CORPORATION. NO RIGHTS OF REPRODUCTION ARE IMPLIED. ALL DIMENSIONS ARE SUBJECT TO NORMAL MANUFACTURING VARIATIONS.			
		SIZE <b>A</b>	TYPE <b>C-</b>	DWG NO: <b>AT11-026-0205</b>	REVISION <b>A2</b>
		SCALE: NONE			SHEET 1 OF 1

# Mouser Electronics

Authorized Distributor

Click to View Pricing, Inventory, Delivery & Lifecycle Information:

[Amphenol:](#)

[AT11-026-0205](#)