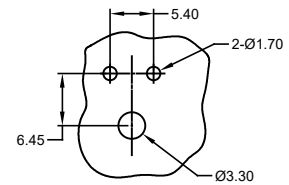
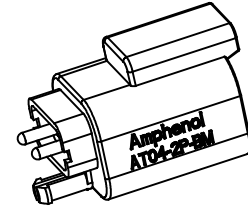
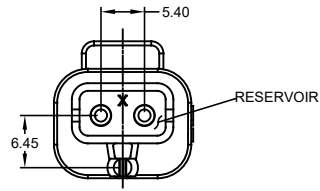
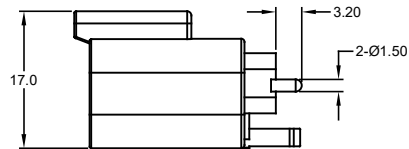
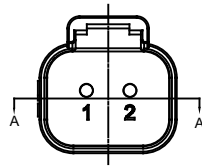
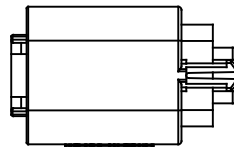


SECTION A-A



RECOMMENDED LAYOUT
VIEW FROM COMPONENTS
SIDE OF PCB



NOTES: UNLESS OTHERWISE SPECIFIED

1. MATERIAL:
HOUSING: THERMOPLASTIC; COLOR: BLACK
CONTACT: COPPER ALLOY
2. MODIFICATIONS: PCB MOUNT
3. SPECIFICATIONS:
 - 3.1 CURRENT RATING: 13 AMPS
 - 3.2 OPERATING TEMPERATURE: -55°C TO +125°C
 - 3.3 DIELECTRIC WITHSTANDING VOLTAGE: LESS THAN 2 MILLIAMPS CURRENT LEAKAGE @ 1500 VOLTS AC.
 - 3.4 INSULATION RESISTANCE: 1000 MEGOHMS MIN @ 25°C.
 - 3.5 MOISTURE RESISTANCE: IP67 (MATED CONDITION)
 - 3.6 MATING CYCLE DURABILITY: 100 CYCLES
 - 3.7 RoHS COMPLIANT
4. MATING PART: AT06-2S* PLUG (* = MODIFICATIONS AND COLORS)
5. ALL DIMENSIONS ARE FOR REFERENCE USE ONLY.
6. POTTED CONNECTORS SPECIFIED FOR UP TO 5 P.S.I. APPLICATIONS.

| AT04-2P-BMXX VARIANTS | | |
|-----------------------|-----------------------------|--------------|
| CONTACT PLATING | POTTING OR NOT IN RESERVOIR | PART NUMBER |
| GOLD | NO POTTING | AT04-2P-BM01 |
| GOLD | POTTING | AT04-2P-BM02 |
| NICKEL | NO POTTING | AT04-2P-BM03 |
| NICKEL | POTTING | AT04-2P-BM04 |

| REVISIONS | | | | | |
|-----------|-----|----------------------------------|-----------|-------|-------|
| REV | ECO | DESCRIPTION | DATE | BY | APPR |
| A1 | - | RELEASE NUMBER | SEP/24/14 | ORION | |
| A2 | - | UPDATE DRAWING | OCT/06/14 | JARRY | |
| A3 | - | ADD NICKEL PLATING VERSION | APR/24/15 | ORION | |
| A4 | - | CHANGE PC TAIL LENGTH | AUG/04/15 | ORION | TOMMY |
| A5 | - | REMOVE A DIMENSION AND ADD COLOR | AUG/10/15 | ORION | TOMMY |
| A6 | - | REVISE DRAWING | 10JUL20 | JHEAD | DH |

TITLE: PCB MOUNT RECEPTACLE, 2 PIN, STRAIGHT, A SERIES

DWG NO:

AT04-2P-BMXX

REV: A6

SHT: 1

OF: 1

| SEE PART NUMBER CHART | | PART NUMBER | | DESCRIPTION | | ITEM |
|---------------------------------------|----------------|--|--|-------------|--|--|
| QUANTITY | MATERIALS LIST | | | | | |
| UNLESS OTHERWISE SPECIFIED | | SIGNATURES | | DATE | | <p>Sine Systems - www.amphenol-sine.com 44724 Motley Drive Clinton Township, MI 48036</p> <p>BOARDLOCK PCB MOUNT RECEPTACLE, 2 PIN, STRAIGHT, A SERIES</p> |
| 1) All dimensions are in metric (mm). | | DRAWN: ORION LI | | SEP/24/14 | | |
| 2) Tolerances are as follows: | | CHECKED: | | | | |
| 1 PL DEC ±0.30 Fractions ±1/64 | | ENGINEER: | | | | |
| 2 PL DEC ±0.15 Angles ±1° | | APPROVAL: TOMMY XIE | | SEP/24/14 | | |
| 3) Note reference = | | CUSTOMER: | | | | |
| MATERIAL SPECIFICATIONS: | | THIS DRAWING IS SUPPLIED FOR INFORMATION ONLY. DESIGN FEATURES, SPECIFICATIONS AND PERFORMANCE DATA SHOWN HEREON ARE THE PROPERTY OF THE AMPHENOL CORPORATION. NO RIGHTS OF REPRODUCTION ARE IMPLIED. ALL DIMENSIONS ARE SUBJECT TO NORMAL MANUFACTURING VARIATIONS. | | | | SIZE: B C- TYPE: NONE DWG NO: AT04-2P-BMXX REVISION: A6 |
| PROCESS SPECIFICATIONS: | | | | | | SCALE: NONE |
| NEXT ASSY: | | | | | | SHEET 1 OF 1 |

Mouser Electronics

Authorized Distributor

Click to View Pricing, Inventory, Delivery & Lifecycle Information:

[Amphenol:](#)

[AT04-2P-BM03](#) [AT04-2P-BM01](#) [AT04-2P-BM02](#) [AT04-2P-BM04](#)