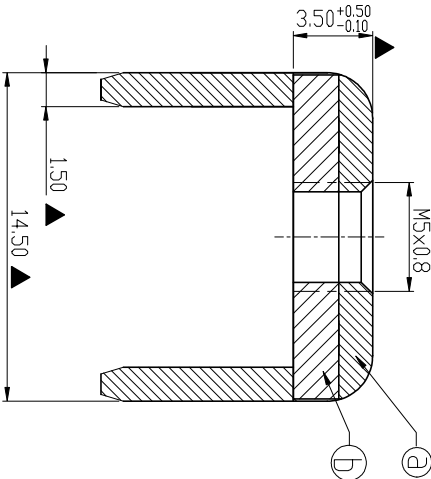
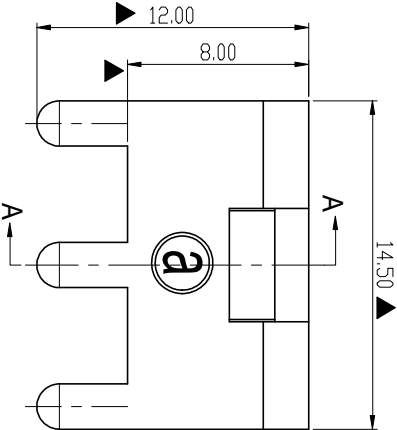


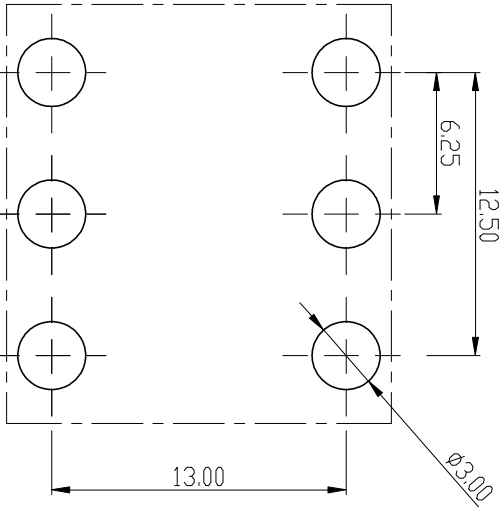
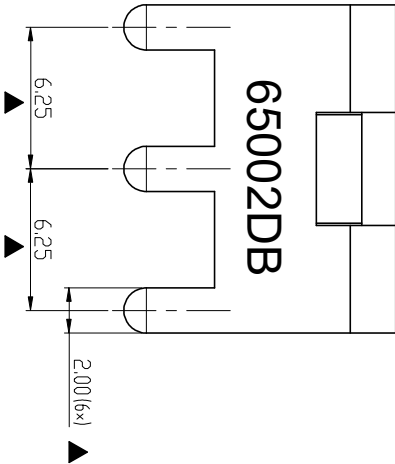
RoHS Compliant

Rev.		SIGN	DATE	DESCRIPTION	APPROVER
THIS IS CAD DRAWING, DO NOT REVISE MANUALLY!!!					

Technical Specification:
1. Current: 90A.
2. Torque: 15 lbf.in.
3. Mark "▲" is the Critical dimension.



SECTION A-A



PCB LAYOUT

①	Spacer	Steel , Matte Tin Plated	1PCS
②	terminal	Copper alloy, Matte Tin Plated	1PCS
ITEM	PART NAME	DESCRIPTION	Q'ty

Amphenol
ANYTEK

CUSTOMER COPY

ALL RIGHTS RESERVED. REPRODUCTION OR ISSUE TO THIRD PARTIES IN ANY FORM WHATSOEVER IS NOT PERMITTED WITHOUT WRITTEN AUTHORITY FROM THE PROPRIETOR, PROPERTY OF ANYTEK TECHNOLOGY CO., LTD

TITLE		AMT65002DB Stamped terminal			
PART NO.		AMT0650002DB0000G			
APPROVED		CHECKED	DESIGNED	DRAWN	CUST NO.
		Seamus	2023.10.23	Seamus	2023.10.23
				UNIT: mm	Tolerance
				SCALE: NONE	>30 ±0.60
				REV: A0	0-6 ±0.40
					ANGLES ±1°

Mouser Electronics

Authorized Distributor

Click to View Pricing, Inventory, Delivery & Lifecycle Information:

[Amphenol:](#)

[AMT0650002DB0000G](#)