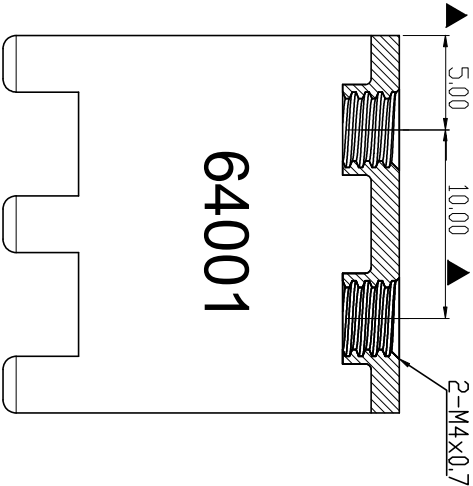
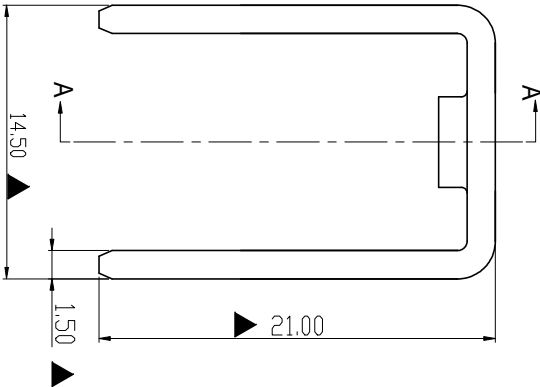
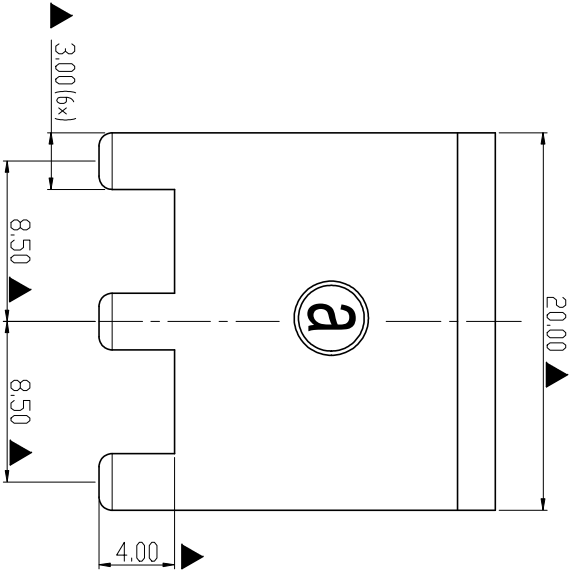
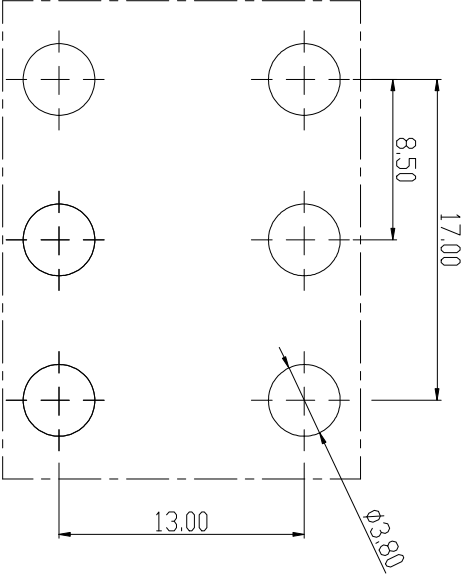


RoHS Compliant

Rev.		SIGN	DATE	DESCRIPTION	APPROVER
THIS IS CAD DRAWING, DO NOT REVISE MANUALLY!!!					





SECTION A-A



PCB LAYOUT

Technical Specification:

1. Material: Copper alloy ,Matte Tin Plated
2. Current: 135A.
3. Torque: 15 lbf.in.
- 4.Mark "▲" is the Critical dimension.

Amphenol ANYTEK				CUSTOMER COPY			
				ALL RIGHTS RESERVED. REPRODUCTION OR ISSUE TO THIRD PARTIES IN ANY FORM WHATEVER IS NOT PERMITTED WITHOUT WRITTEN AUTHORITY FROM THE PROPRIETOR. PROPERTY OF ANYTEK TECHNOLOGY CO., LTD			
TITLE	AMT64001 Stamped terminal						
PART NO.	AMT0640001TH0000G			DWG NO.	8AMT0028		
APPROVED	CHECKED	DESIGNED	DRAWN	CUST NO.			
		Seamus 2023.10.16	Seamus 2023.10.16				
					UNIT: mm	Tolerance	
					SCALE: NONE	±0.60	
					REV: A1	±0.40	
						0-6	
						ANGLES ±1°	

Mouser Electronics

Authorized Distributor

Click to View Pricing, Inventory, Delivery & Lifecycle Information:

[Amphenol:](#)

[AMT0640001TH0000G](#)