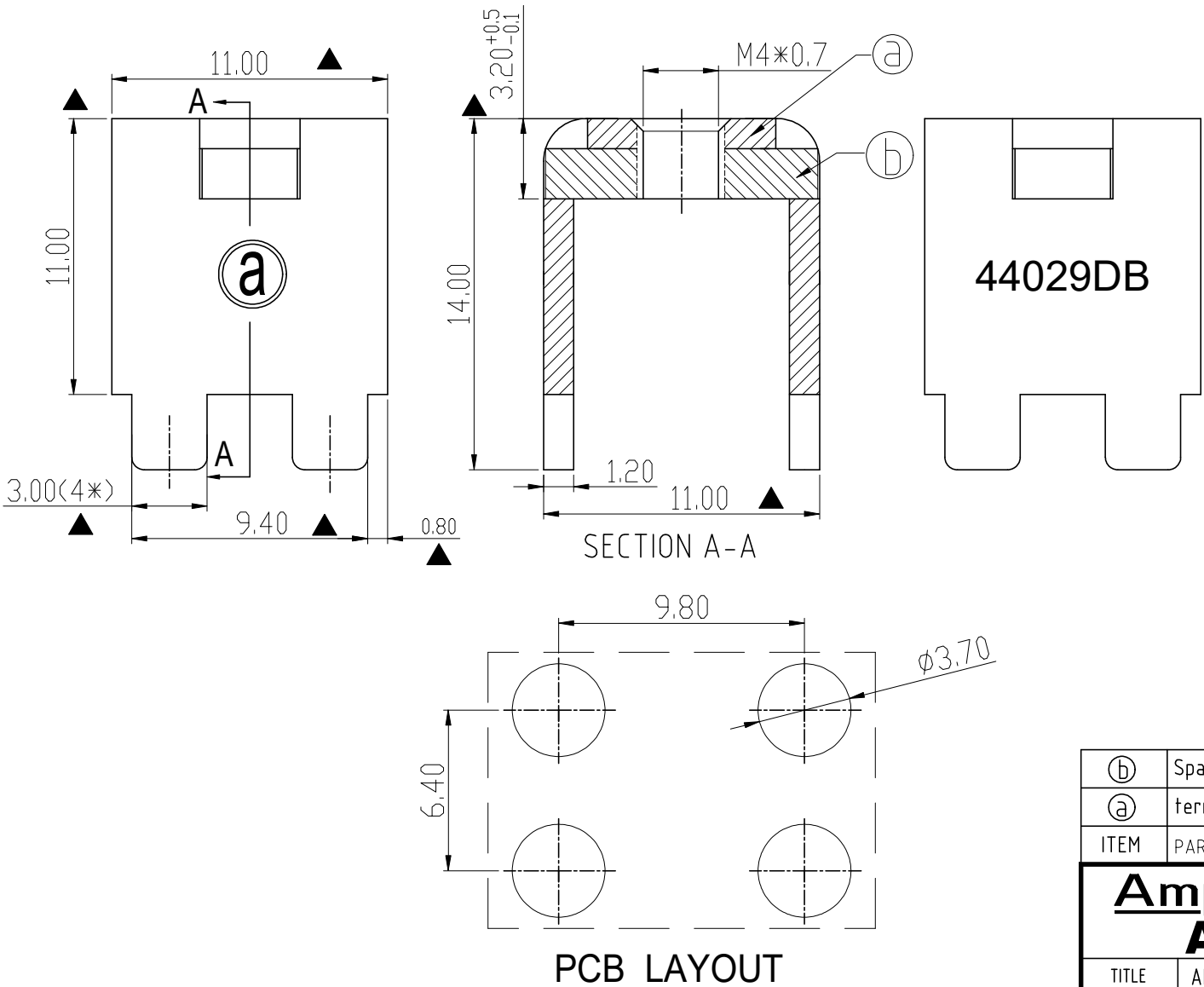


RoHS Compliant

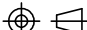
| Rev. | SIGN | DATE | DESCRIPTION | APPROVER |
|--|------|------------|-------------|----------|
| A0 | | 2023.10.17 | | Guoxue |
| THIS IS CAD DRAWING, DO NOT REVISE MANUALLY!!! | | | | |

Technical Specification:

1. Current: 80A.
2. Torque: 13 lbf.in.
3. Mark "▲" is the Critical dimension.



| | | | |
|------|-----------|--------------------------------|------|
| ⑥ | Spacer | Steel , Matte Tin Plated | 1PCS |
| ① | terminal | Copper alloy, Matte Tin Plated | 1PCS |
| ITEM | PART NAME | DESCRIPTION | Q`ty |

| | | | | | | | |
|---------------------------------------|---------|----------------------|----------------------|--|----------|-------------|--|
| <div>Amphenol</div> <div>ANYTEK</div> | | | | <div>CUSTOMER COPY</div> <div>ALL RIGHTS RESERVED. REPRODUCTION OR ISSUE TO THIRD PARTIES IN ANY FORM WHATEVER IS NOT PERMITTED WITHOUTWRITTEN AUTHORITY FROM THE PROPRIETOR. PROPERTY OF ANYTEK TECHNOLOGY CO., LTD</div> | | | |
| TITLE | | AMT44029DB terminal | | | | | |
| PART NO. | | AMT0440029DB0000G | | DWG NO. | 8AMT0016 | | |
| APPROVED | CHECKED | DESIGNED | DRAWN | CUST NO. | | Tolerance | |
| | | Guoxue 2023.10.17 | Guoxue 2023.10.17 |  | | UNIT: mm | |
| | | | | SHEET: 01/01 | | SCALE: NONE | |
| | | | | | | REV.: A0 | |
| | | | | | | >30 ±0.60 | |
| | | | | | | 6-30 ±0.40 | |
| | | | | | | 0-6 ±0.30 | |
| | | | | | | ANGLES ±1° | |

Mouser Electronics

Authorized Distributor

Click to View Pricing, Inventory, Delivery & Lifecycle Information:

[Amphenol:](#)

[AMT0440029DB0000G](#)