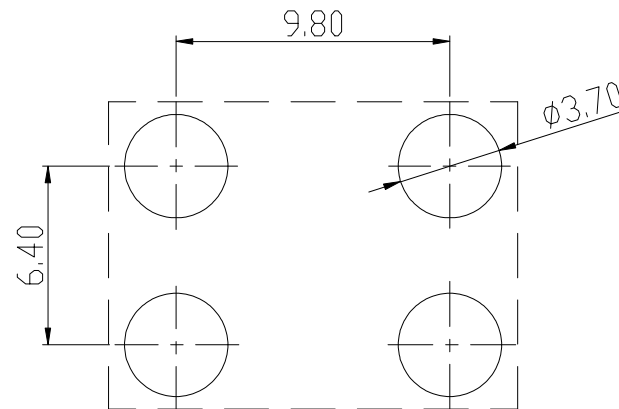
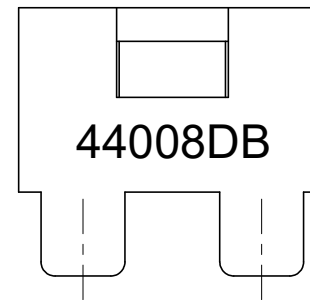
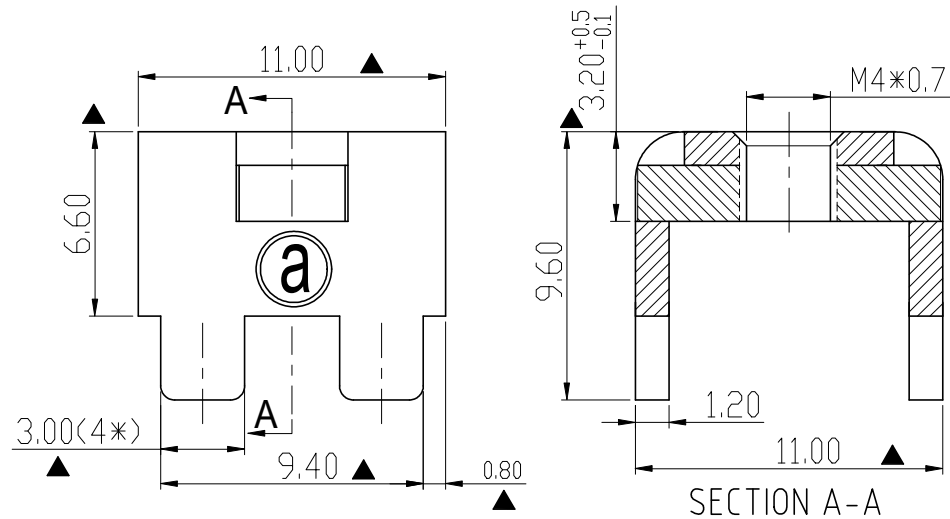


RoHS Compliant

Rev.	SIGN	DATE	DESCRIPTION	APPROVER
A0		2023.10.20		Guoxue
THIS IS CAD DRAWING, DO NOT REVISE MANUALLY!!!				

Technical Specification:

- Current: 80A.
- Torque: 13 lbf.in.
- Mark"▲" is the Critical dimension.




PCB LAYOUT

⑥	Spacer	Steel , Matte Tin Plated	1PCS
⑨	terminal	Copper alloy, Matte Tin Plated	1PCS
ITEM	PART NAME	DESCRIPTION	Q`ty

**Amphenol**  
**ANYTEK**

**CUSTOMER COPY**

ALL RIGHTS RESERVED. REPRODUCTION OR ISSUE TO THIRD PARTIES IN ANY FORM WHATEVER IS NOT PERMITTED WITHOUTWRITTEN AUTHORITY FROM THE PROPRIETOR.PROPERTY OF ANYTEK TECHNOLOGY CO., LTD

TITLE		AMT44008DB terminal				
PART NO.		AMT0440008DB0000G		DWG NO.	8AMT0013	
APPROVED	CHECKED	DESIGNED	DRAWN	CUST NO.		
		Guoxue 2023.10.20	Guoxue 2023.10.20			Tolerance
						>30 ±0.60
						6-30 ±0.40
						0-6 ±0.30
				SHEET: 01/01		ANGLES ±1°
				UNIT: mm		
				SCALE: NONE		
				REV.: A0		

# Mouser Electronics

Authorized Distributor

Click to View Pricing, Inventory, Delivery & Lifecycle Information:

[Amphenol:](#)

[AMT0440008DB0000G](#)