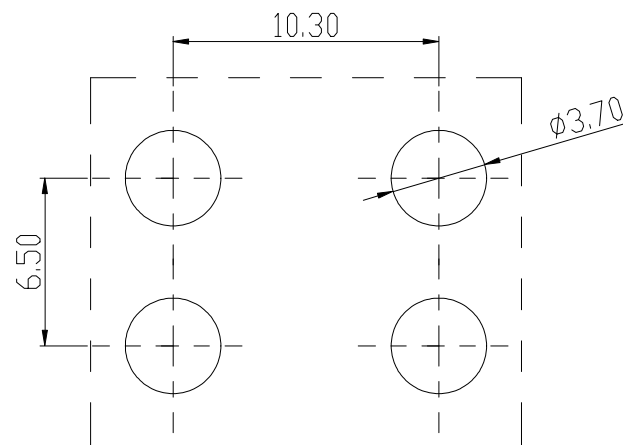
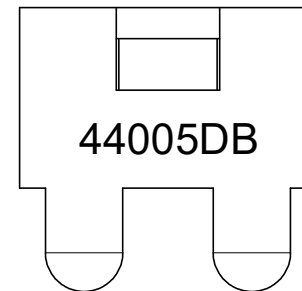
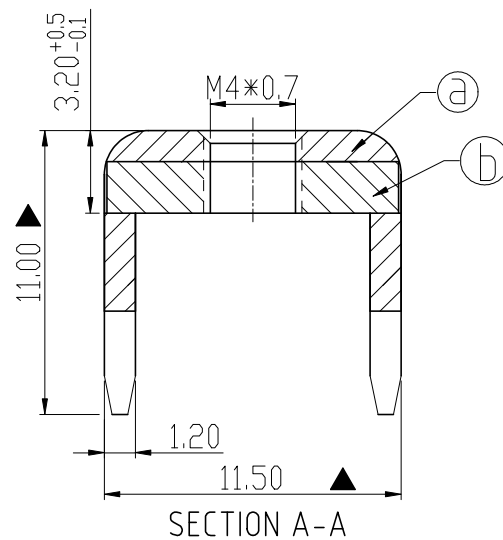
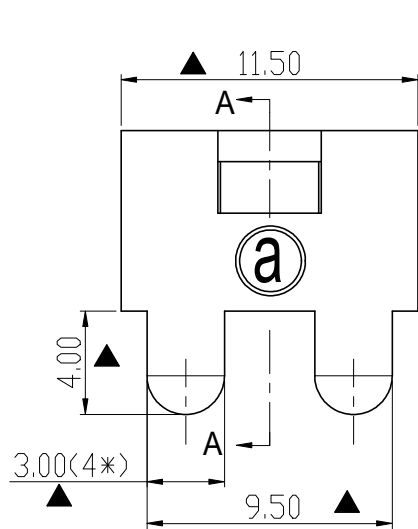


RoHS Compliant

Rev.	SIGN	DATE	DESCRIPTION	APPROVER
A0		2023.10.23		Guoxue
THIS IS CAD DRAWING, DO NOT REVISE MANUALLY!!!				



PCB Layout

Technical Specification:


1. Current: 80A.
2. Torque: 13 lbf.in.
3. Mark "▲" is the Critical dimension.

(b)	Spacer	Steel , Matte Tin Plated	1PCS
(a)	terminal	Copper alloy, Matte Tin Plated	1PCS
ITEM	PART NAME	DESCRIPTION	Q`ty

Amphenol
ANYTEK

CUSTOMER COPY

ALL RIGHTS RESERVED. REPRODUCTION OR ISSUE TO THIRD PARTIES IN ANY FORM WHATEVER IS NOT PERMITTED WITHOUT WRITTEN AUTHORITY FROM THE PROPRIETOR. PROPERTY OF ANYTEK TECHNOLOGY CO., LTD

TITLE		AMT44005DB terminal								
PART NO.		AMT0440005DB0000G			DWG NO.	8AMT0010				
APPROVED		CHECKED	DESIGNED	DRAWN	CUST NO.				Tolerance	
			Guoxue 2023.10.23	Guoxue 2023.10.23			UNIT: mm		>30 ±0.60	
							SCALE: NONE		6-30 ±0.40	
					SHEET: 01/01		REV: A0		0-6 ±0.30	
									ANGLES ±1°	

Mouser Electronics

Authorized Distributor

Click to View Pricing, Inventory, Delivery & Lifecycle Information:

[Amphenol:](#)

[AMT0440005DB0000G](#)