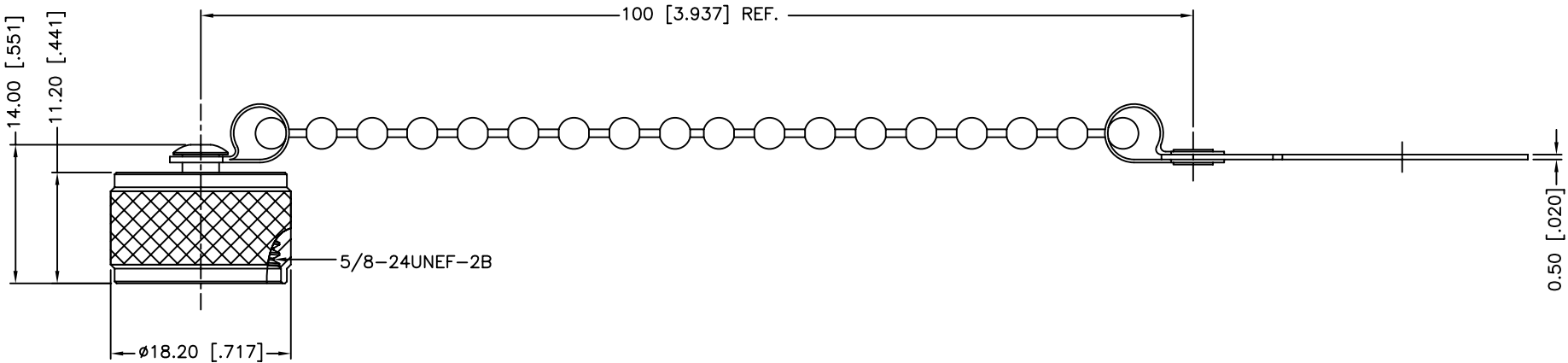
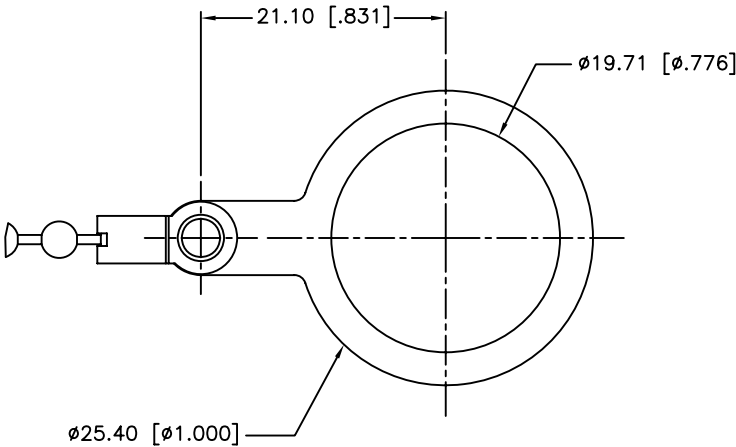
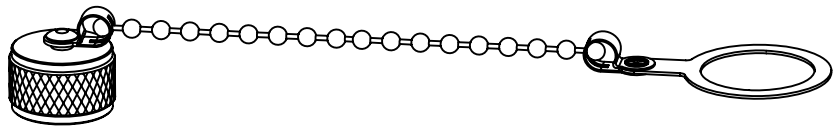


REV.	DATE	ECR NO.	DESCRIPTION
NC	12/20/11	XXXXXX	INITIAL RELEASE



4	CHAIN	BRASS	NICKEL	1
3	RIVET	BRASS	NICKEL	1
2	GASKET	SILICON RUBBER	RED	1
1	SHELL	BRASS	NICKEL	1
DESCRIPTION	MATERIAL	FINISH	QTY	

<p>UNLESS OTHERWISE SPECIFIED DIMENSIONS ARE IN MILLIMETERS. DIMENSIONS IN [] ARE IN INCHES AND FOR CUSTOMER REFERENCE ONLY.</p> <p>UNLESS OTHERWISE SPECIFIED TOLERANCES FOR MILLIMETERS ARE: 0.5 - 8mm ± 0.20mm 8 - 30mm ± 0.40mm 30 - 120mm ± 0.50mm</p> <p>UNLESS OTHERWISE SPECIFIED TOLERANCES FOR INCHES ARE: .020 - .315 = ± 0.007" .315 - 1.180 = ± 0.015" 1.180 - 4.724 = ± 0.020"</p> <p>DO NOT SCALE DRAWING</p>	APPROVALS	DATE
	DRAWN M.ZHANG	12/20/11
	CHECKED	
	ISSUED	
	SHEET 1 OF 1	
<p>CAD FILE C:/CONNEX/202102-11.DWG</p>		

<h1>Amphenol Connex</h1>			
<p>PART DESCRIPTION</p> <p>N MALE CAP WITH CHAIN ø19.71MM LARGE LOOP</p>			
<p>PART NO. 202102-11</p>			
DWG. NO. 202102-11.DWG	REV. NC	SIZE A	SCALE NA

Mouser Electronics

Authorized Distributor

Click to View Pricing, Inventory, Delivery & Lifecycle Information:

[Amphenol:](#)

[202102-11](#)