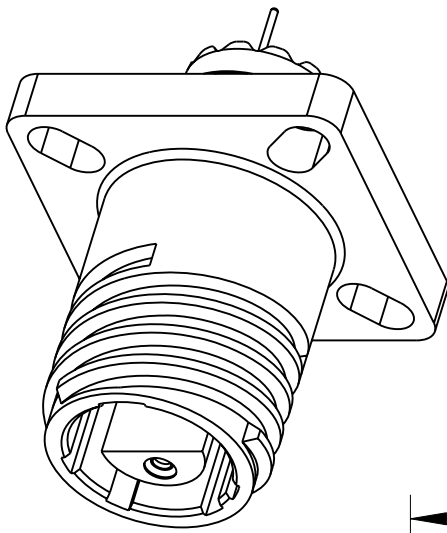
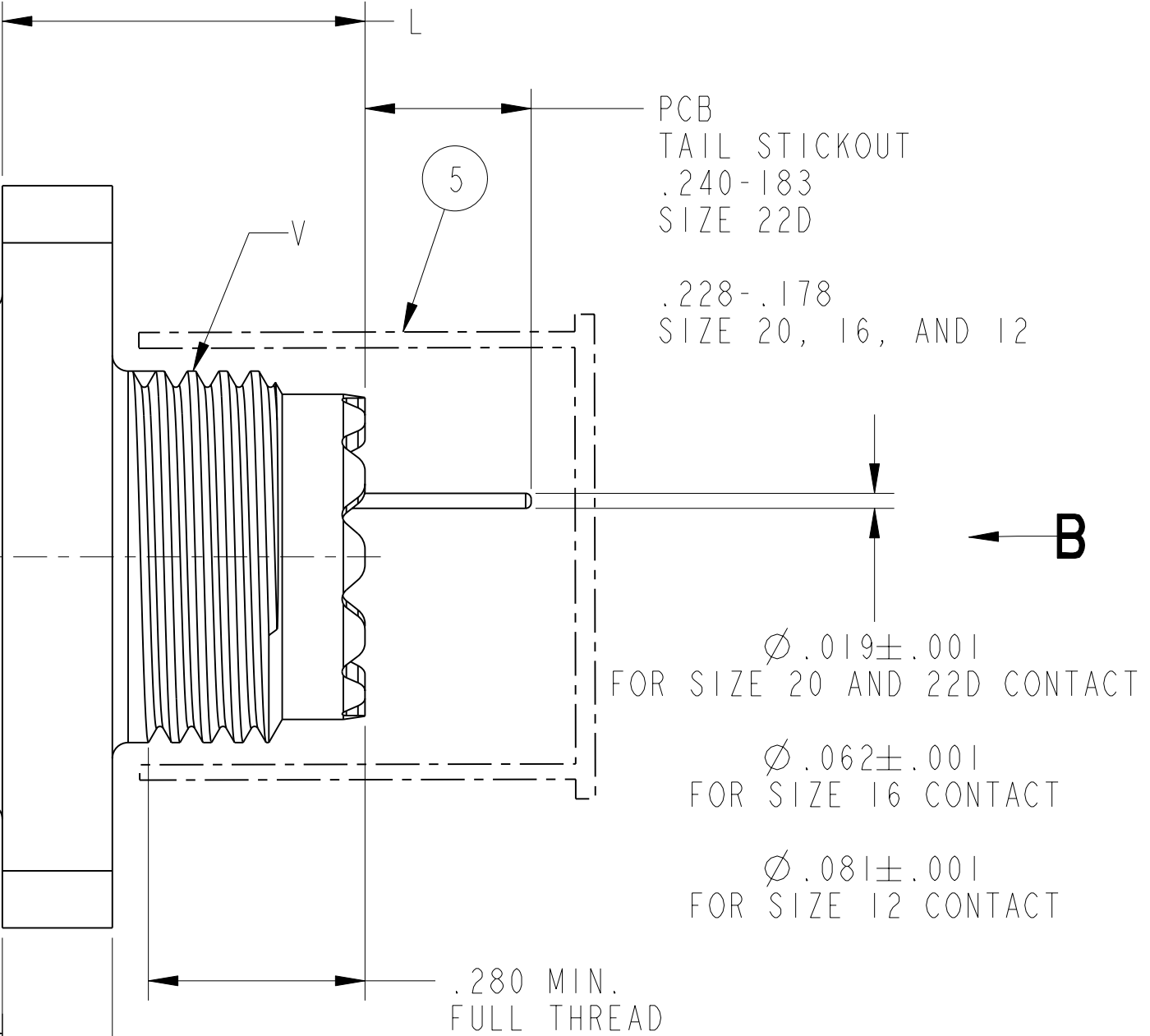
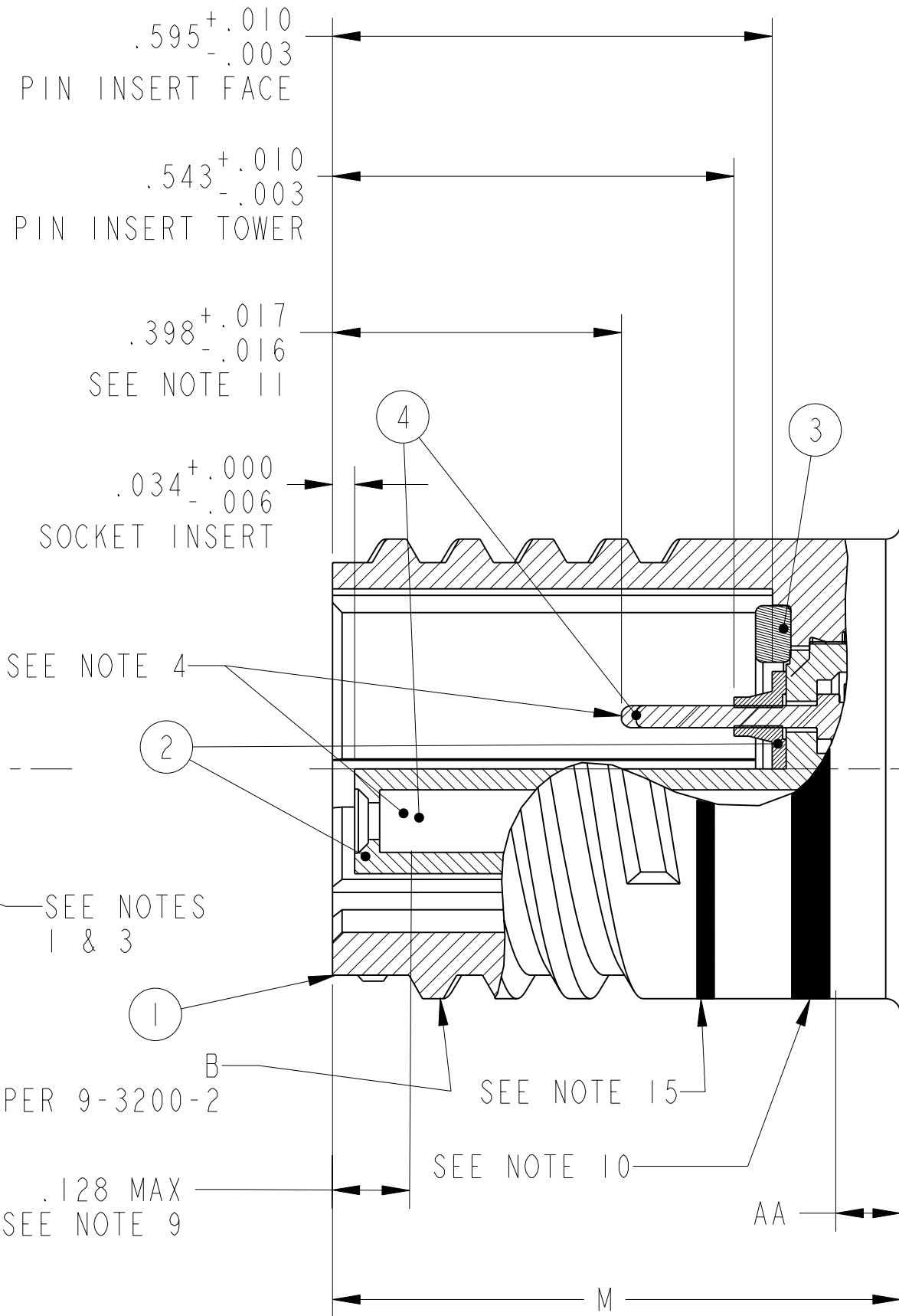
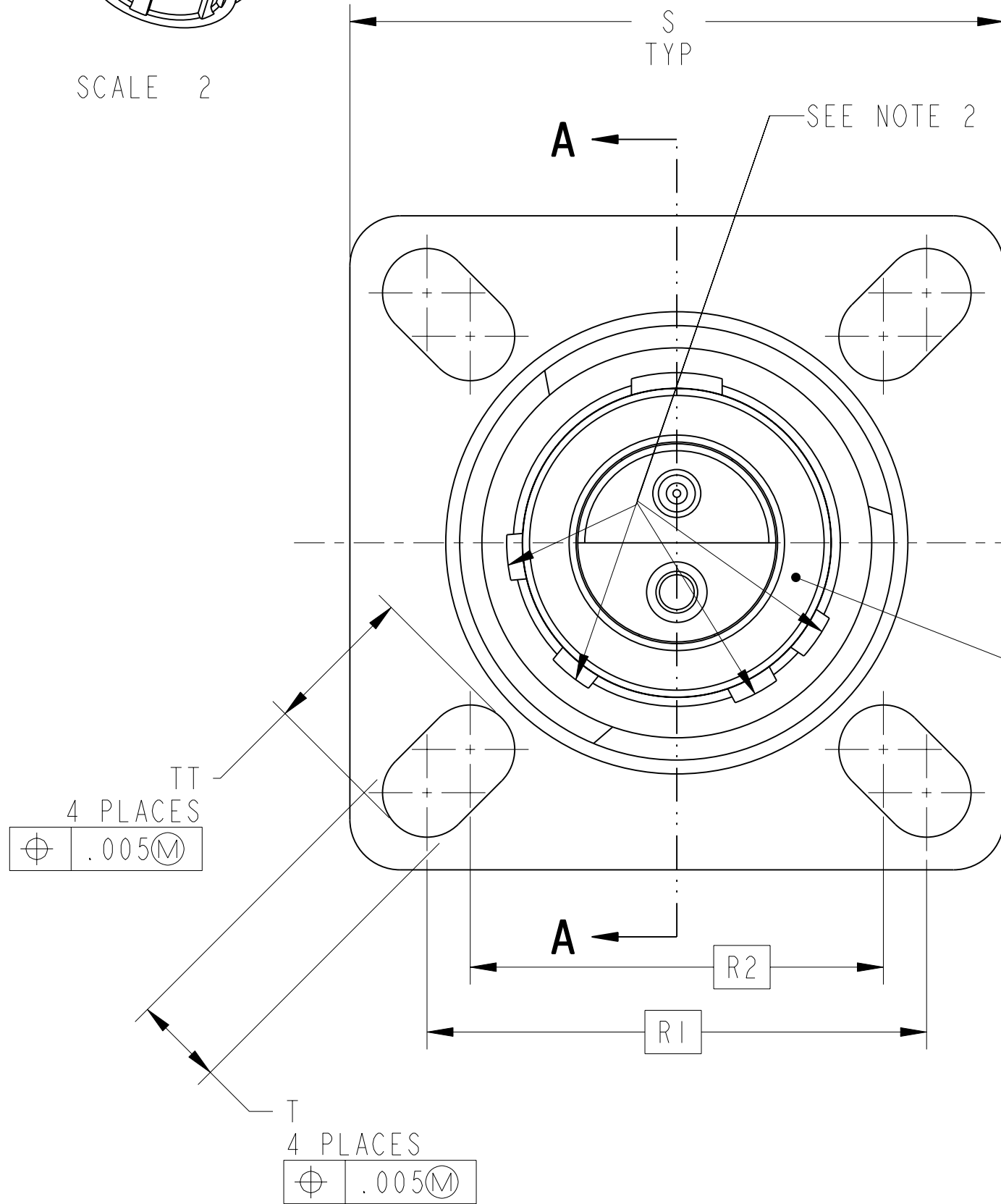


88/91-644620/629		DOCUMENT NO.
REV.	SHEET 1 OF 3	
REVISIONS		
LTR	DESCRIPTION	DATE
A	INITIAL RELEASE	
B	(CL11) REVISED NOTE 4 ECN: A0214	
C	(CL 11) ADD CAP ECN: C0766	4/30/15



SCALE 2



SECTION A-A

5	I	SEE TABLE	PROTECTIVE CAP	16
4	SEE P/L	SEE TABLE	CONTACT	5
3	I	10-527257-()	GASKET	5
2	I	10-552440/449-()P OR	INSERT, PIN	3, 5
		10-538170/179-()P OR		
		10-555407/429-()S OR	INSERT, SOCKET	
		10-417307/350-()S		
I	I	SEE COLUMN	SHELL	5
POS	QTY	PART NUMBER	DESCRIPTION	NOTE

PARTS LIST

APPROVALS		DATE
PREPARED BY	D. ALGER	
ENGINEER IN CHARGE	D. FREAR	29-JUNE-05
DESIGN MANAGER	E. SHEPLER	
DESIGN ACTIVITY GROUP	MILAERO	
THIRD ANGLE PROJECTION		

AMPHENOL CORPORATION			
40-60 DELAWARE AVENUE SIDNEY, N.Y. 13838			
CONNECTOR, ELECTRICAL RECEPTACLE, TYPE CTVP00R(), PCB CONTACTS			
SIZE	CAGE CODE	DOCUMENT NO.	REV.
C	77820	88/91-644620/629	C
SCALE: 5.0		REF. 91-577370/379	SHEET 1 OF 3

NOTES: SEE SHEET 3

THE USE OF THIS DOCUMENT IS UNLIMITED.
HOWEVER, DOCUMENTS REFERENCED HEREON
MAY CONTAIN LIMITED RIGHTS DATA.

PRO/ENGINEER INFORMATION	
N/A	Pro/e Model Used:
N/A	88-644620-629.ASSEM
Drawing Name:	
88-91-644620-629	
NEXT ASSEMBLY	

UNLESS OTHERWISE SPECIFIED	SPECIFICATIONS
LINEAR DIMENSIONS ARE IN INCHES TOLERANCES: .XXXX = ±.0005 ANGLES= ±2° .XXX = ±.010 .XX = ±.03 .X = ±.1 DIM.& TOL. PER ASME Y14.5M; DRM PER MIL-STD-31000; OTHER Amphenol Sds. PER 9-3800 LEGENDS: =FLAG NOTE CALL OUT REFERENCE ONLY	MATERIAL SPEC.
	N/A
	PROCESS SPEC.
	SEE NOTE 7

88/91-644620/629

SHEET 1 OF 3

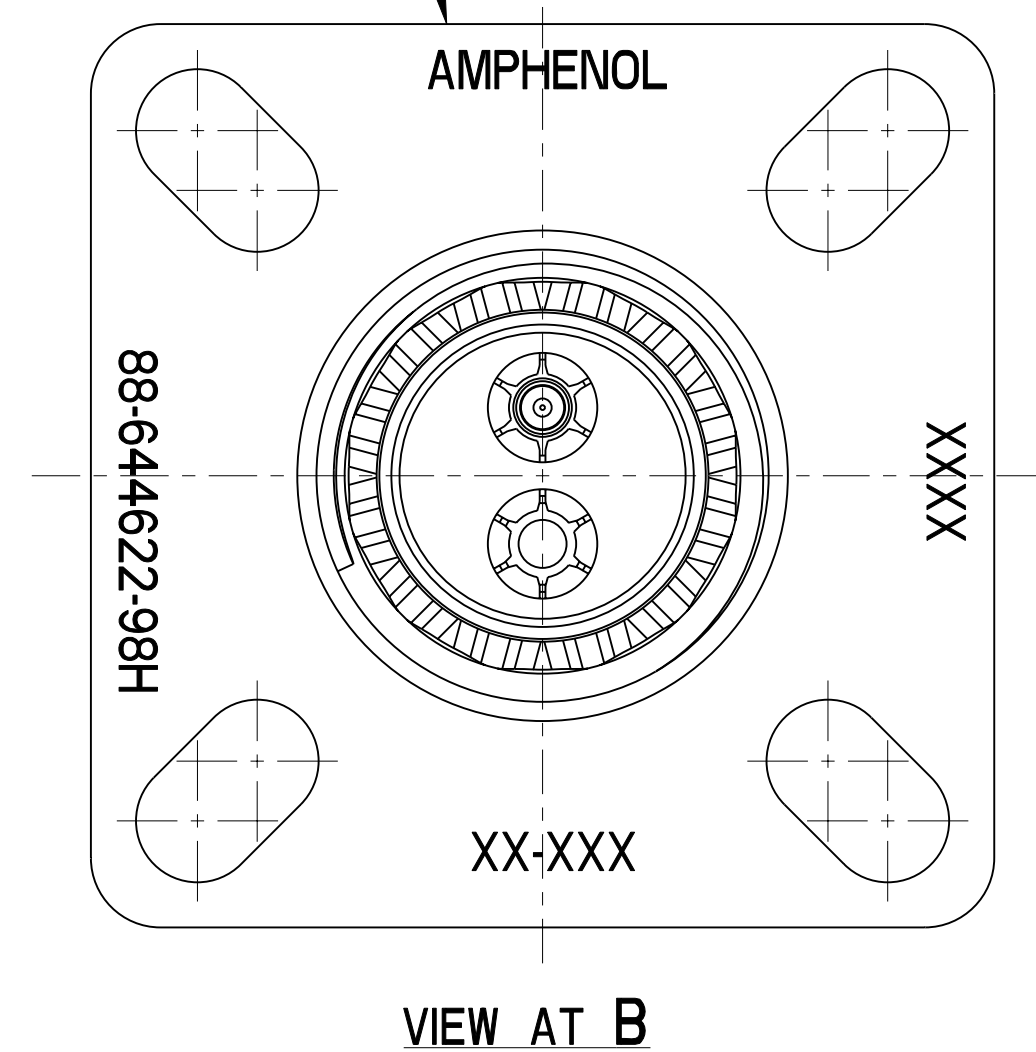
REV.
C

IMAGED / Oct. 18 2017, 2:28:57 PM

CONTACTS REFERENCE ONLY SEE NOTE 4		
CONTACT SIZE	PIN PART NO.	SOCKET PART NO.
12	10-597502-105	10-597503-075
16	10-497630-055	10-497649-075
20	10-497640-025	10-497643-025
22D	10-407552-055	10-497623-335

PC TAIL PROTECTION CAP	
SHELL SIZE	CAP PART NO.
9	10-070506-10S
11	10-070506-012
13	10-070506-014
15	10-070506-016
17	10-070506-018
19	10-070506-020
21	10-070506-022
23	10-070506-024
25	10-070506-025

STAMP "AMPHENOL", PART NO. AND-
DATE CODE (9-3895) PER 9-5788
SEE NOTE 12
EXAMPLE:
 AMPHENOL 88-644622-98S 0608
FOR ROTATED KEYWAYS
EXAMPLE:
 AMPHENOL 88-644622-98H 0608



NOTES: SEE SHEET 3

THE USE OF THIS DOCUMENT IS UNLIMITED.
HOWEVER, DOCUMENTS REFERENCED HEREON
MAY CONTAIN LIMITED RIGHTS DATA.

SIZE C	CAGE CODE 77820	DOCUMENT NO. 88/91-644620/629	REV. C
SCALE: 5.0		REF: 91-577370/379	SHEET 2 OF 3

4

3

2

REV. C

SHEET 3 OF 3

88/91-644620/629

88/91-644620/629

DOCUMENT NO.

ASSEMBLY NUMBER

CTVP NUMBER REF

SHELL

B
THREAD (PLATED)
PER 9-3200-2
CLASS 2A

K
±.003

L
MAX

M
±.0025

R1

R2

S
+.007
-.005

ØT
+.008
-.006

V
THREAD (PLATED)
PER 9-7543

AA
MAX
PANEL
THICKNESS

TT
+.008
-.006

NOT AVAILABLE

()-644620-()	00R()- 7-()												
()-644621-()	00R()- 9-()	10-527244/249-09()	.6250-0.1P-0.3L-TS	.138	.514	.7702	.719	.594	.942	.128	M12X1-6g 0.100R	.234	.216
()-644622-()	00R()-11-()	10-527244/249-11()	.7500-0.1P-0.3L-TS				.812	.719	1.037		M15X1-6g 0.100R		.194
()-644623-()	00R()-13-()	10-527244/249-13()	.8750-0.1P-0.3L-TS				.906	.812	1.131		M18X1-6g 0.100R		.173
()-644624-()	00R()-15-()	10-527244/249-15()	1.0000-0.1P-0.3L-TS				.969	.906	1.226		M22X1-6g 0.100R		.194
()-644625-()	00R()-17-()	10-527244/249-17()	1.1875-0.1P-0.3L-TS				1.062	.969	1.316		M25X1-6g 0.100R		
()-644626-()	00R()-19-()	10-527244/249-19()	1.2500-0.1P-0.3L-TS	.165	.545	.7387	1.156	1.062	1.442	.154	M28X1-6g 0.100R	.204	
()-644627-()	00R()-21-()	10-527244/249-21()	1.3750-0.1P-0.3L-TS				1.250	1.156	1.568		M31X1-6g 0.100R		
()-644628-()	00R()-23-()	10-527244/249-23()	1.5000-0.1P-0.3L-TS				1.375	1.250	1.694		M34X1-6g 0.100R		.242
()-644629-()	00R()-25-()	10-527244/249-25()	1.6250-0.1P-0.3L-TS				1.500	1.375	1.816		M37X1-6g 0.100R		

SEE FINISH DATA TABLE

TO COMPLETE, ADD INSERT ARRANGEMENT SUFFIX PER 9-2437-25

W=OLIVE DRAB NICKEL BASE
F=ELECTROLESS NICKEL PLATE

SEE FINISH DATA TABLE

7. PROCESS SPEC:
ASSY. 9-5047-11
TEST 9-5044
9-2437-25, 9-5788, 9-3200-2, 9-7543, 9-3895

6. PACKAGE PER PRODUCTION PROCESS SHEET.

5. SEE SEPARATE PARTS LIST FOR COMPONENT PART NUMBERS AND QUANTITIES.

4. DRAWING ILLUSTRATES FINAL ASSEMBLY. FOR FINAL INSTALLATION, CONTACTS MUST BE ASSEMBLED INTO ALL INSERT HOLES. ALL UNUSED GROMMET HOLES MUST BE FILLED WITH THE APPROPRIATE SIZE SEALING PLUG. CONTACTS ARE SHIPPED ASSEMBLED. SEE NOTE 16.

3. INSERT ASSEMBLY IS NOT REMOVABLE.

2. ALTERNATE ROTATIONS ARE OBTAINED BY ROTATING INDICATED KEYWAYS. SIX POSITIONS ARE AVAILABLE, SEE 9-2437-25.

1. FOR CONTACT ARRANGEMENT PATTERN, SEE DRAWINGS L-15206-() THRU L-15225-(). ALTERNATE POSITIONS THEREON DO NOT APPLY.

NOTES:

THE USE OF THIS DOCUMENT IS UNLIMITED. HOWEVER, DOCUMENTS REFERENCED HEREON MAY CONTAIN LIMITED RIGHTS DATA.

16. AFTER CONTACTS HAVE BEEN INSTALLED, ASSEMBLE PROTECTION CAP TO REAR OF CONNECTOR. TO INSURE CAP LOCATION APPLY TAPE IF NEEDED.

15. FULLY MATED INDICATOR BAND (COLOR RED).

14. UNITS MEET APPLICABLE REQUIREMENTS OF MIL-DTL-38999.

13. DIMENSION INDICATES GROMMET STICKOUT FOR 25-11 INSERT ASSY.

12. SEE WORK ORDER FOR PERMISSIBLE ADDITIONAL OR ALTERNATE STAMPING.

11. FOR SIZE 8 COAX CONTACT INDICATED DIMENSION IS .175 ± .025.

10. BLUE BAND DENOTES REAR RELEASE CONTACT RETENTION SYSTEM.

9. DISTANCE FROM END OF SHELL TO THE POINT AT WHICH A GAGE PIN, HAVING THE SAME BASIC DIAMETER AS THE MATING CONTACT AND A SQUARE FACE, ENGAGES SOCKET CONTACT SPRING.

8. FOR MATING CONNECTOR, SEE 91-577360/369 AND OTHERS.

FINISH DATA

ASSY. NO. PREFIX	FINISH	SHELL SUFFIX
88-	OLIVE DRAB NICKEL BASE	-XXR
91-	NICKEL PLATED	-XXT

SIZE C

CAGE CODE 77820

DOCUMENT NO. 88/91-644620/629

REV. C

SCALE: 2.0

REF: 91-577370/379

SHEET 3 OF 3

4

3

2

1

88/91-644620/629

DOCUMENT NO.

88/91-644620/629

3

IMAGED / Oct . 18 2017, 2:28:57 PM

88/91-644620/629

DOCUMENT NO.

88/91-644620/629

3

IMAGED / Oct . 18 2017, 2:28:57 PM

Mouser Electronics

Authorized Distributor

Click to View Pricing, Inventory, Delivery & Lifecycle Information:

[Amphenol:](#)

[91-644623-35P](#)