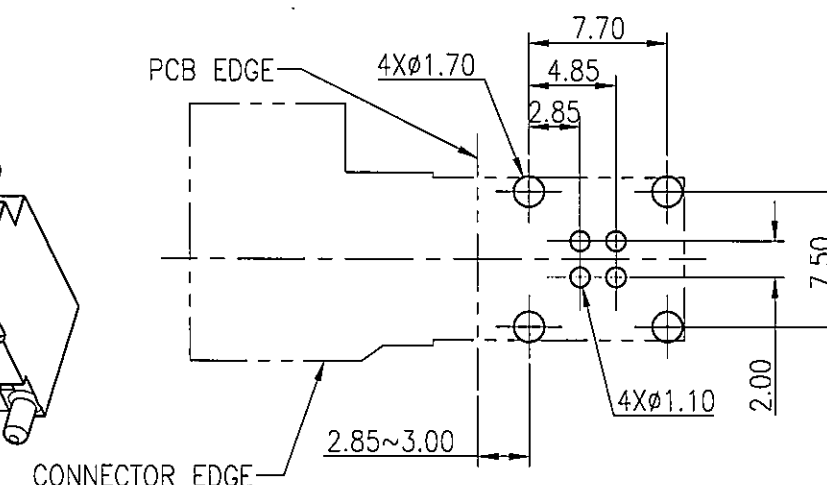
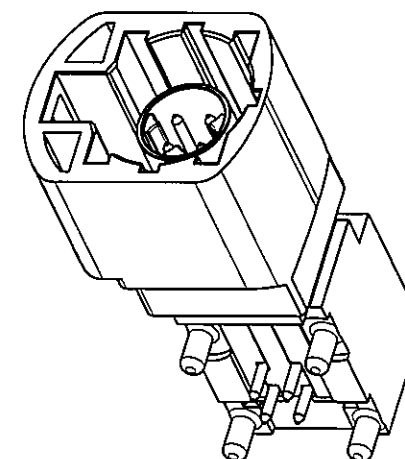
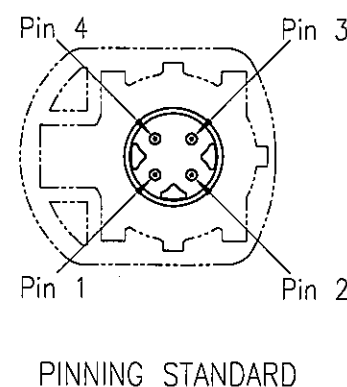
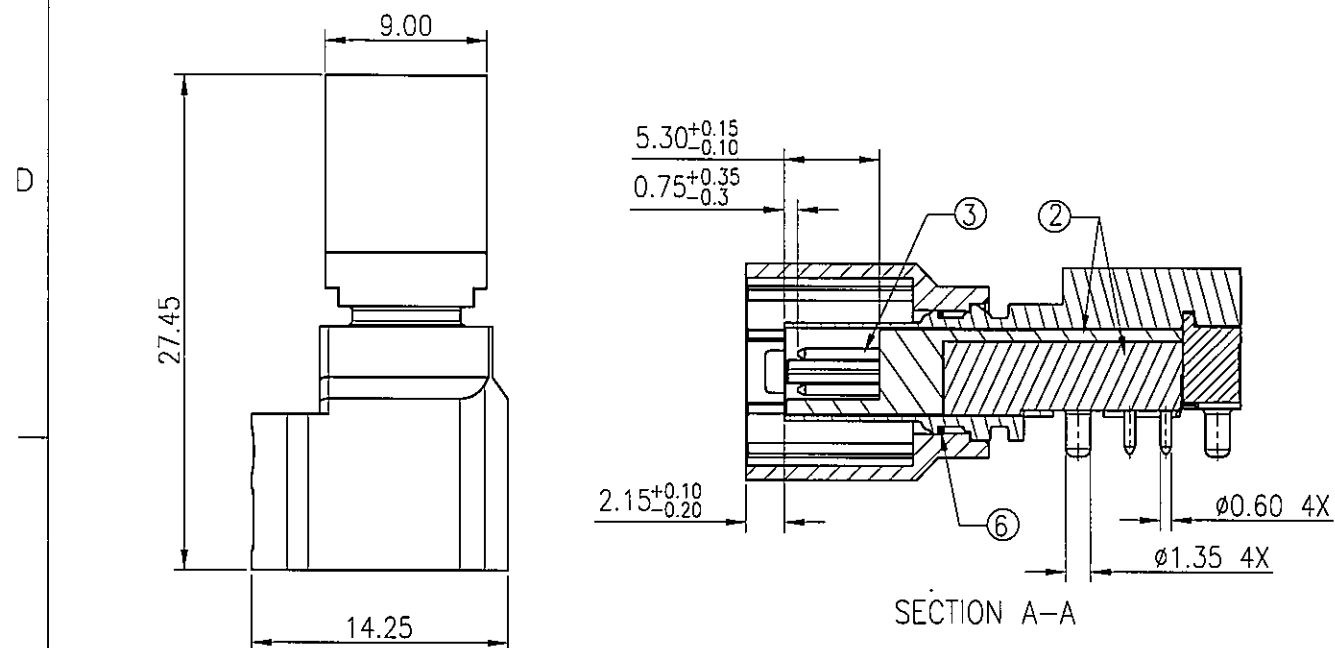


CUSTOMER DRAWING

REVISIONS				
SYM	ECN	DESCRIPTION	DATE	APPROVED
1	HK7304	RELEASE TO CUSTOMER	2016/1/8	IP



RECOMMENDED PCB LAYOUT TOP VIEW
TOLERANCE: \pm 0.05(PCB THICKNESS=1.6 \pm 0.15mm)

Notes:

1.Material:

- ① Housing: High temperature thermoplastic,color see table 1.
- ② Dielectrics: High temperature thermoplastic,color black.
- ③ Center contact: Copper alloy.
- ④ Outer contact : Zinc alloy.
- ⑤ Cover: Zinc alloy.
- ⑥ Baffle: stainless steel.

2.Finish:

- ③ Center contact: 0.15um min. gold plated on contact area;
- ④ Outer contact : 1.27um min. matte tin plated.
- ⑤ Cover: 2um min. nickel plated.

4. RoHS compliant.

5. Order P/N system:

HSD WXPB PCB 18X

Coding: _____
See table 1

Packing method:


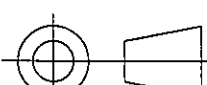
- A- Packing by tape & reel
- B- Packing by tray
- C- Single Packing

Table 1

Plug	Coding	Color	Ral
	A	Black	9005
	B	White	9001
	C	Blue	5005
	D	Claret	4004
	E	Green	6002
	F	Brown	8011
	Z	Waterblue	5021

Plug	Coding	Color	Ral
	G	Grey	7031
	H	Violet	4003
	J	Beige	1001
	K	Curry	1027
	L	Yellow green	6018
	M	Pastel orange	2003
	O	Light green	6027



UNLESS OTHERWISE SPECIFIED TOLERANCES		APPROVAL		DATE		Amphenol					
U.S.	METRIC	DRAWN	KAKA.Yang	2016/1/8							
.X +/-		CHECKED	Wilder	1/8/16							
.XX +/-		CHECKED									
.XXX +/-						TITLE HSD R/A PLUG LOW PROFILE CONNECTOR SMT TYPE, WEST LOCATION					
FRACTIONS +/-											
ANGLES +/-	5°										
FOR MATERIALS AND FINISHES SEE NOTES		DRAWING FILE :									
		S:\PE Master\DRAWING\HSD\HSDWXPBPCB18X-rev1.DWG									
REMOVE SHARP EDGES		ANGLE OF PROJECTION		SIZE		DRAWING NO.		REV.			
DIMENSIONS				A3		HSDWXPBPCB18X		1			
U.S.				INCHES		SCALE		1:1		SHEET 1 OF 1	
METRIC				MM							

Mouser Electronics

Authorized Distributor

Click to View Pricing, Inventory, Delivery & Lifecycle Information:

[Amphenol:](#)

[HSDWBRPPCB18B](#)