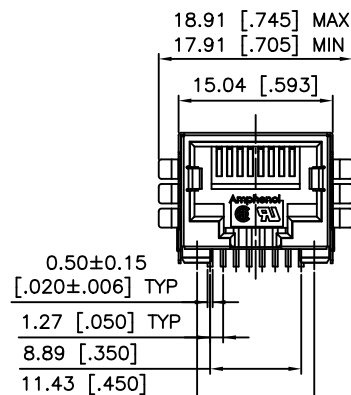
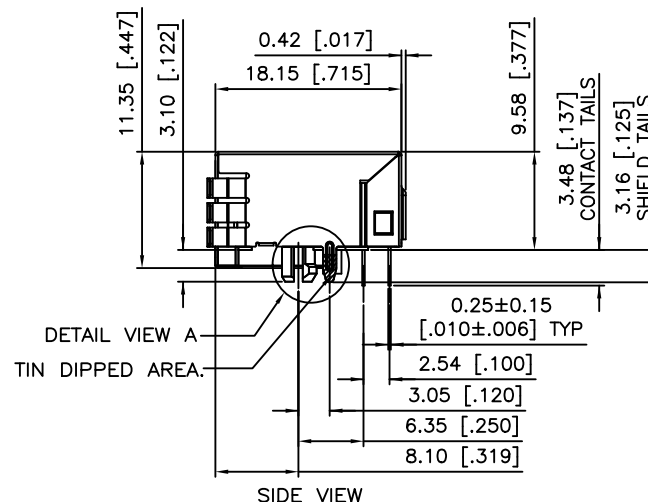


REVISIONS			
REV	DESCRIPTION, ECN, EAR NO.	DATE	APP'D
A	PROPOSAL PER ECN E07035	FEB 27/07	L.CHAN
J	PROPOSAL	JAN 30/08	L.CHAN
K	ADD TIN DIPPED ON SHIELD TAIL	SEP 20/12	L.CHAN
L	ADD PIN DIMENSIONS AND TOLERANCE	FEB 15/17	L.CHAN

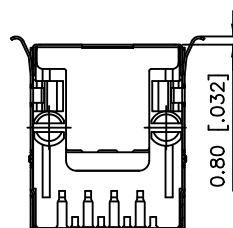


FRONT VIEW

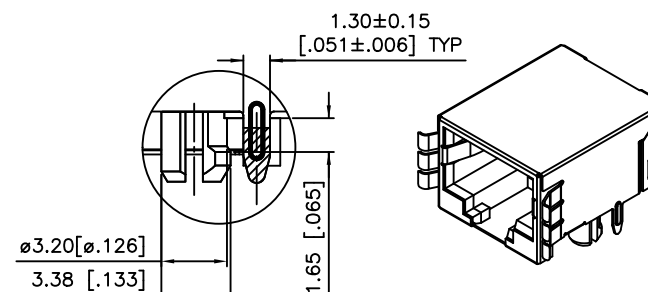


DETAIL VIEW A
TIN DIPPED AREA.

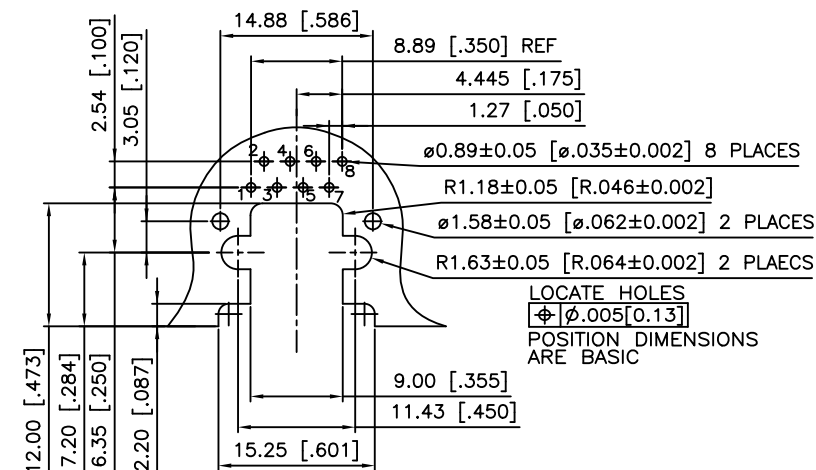
SIDE VIEW



BOTTOM VIEW



DETAIL VIEW A



RECOMMENDED P.C.B. LAYOUT

AMPHENOL PART NUMBER: RJULE-4X182-01

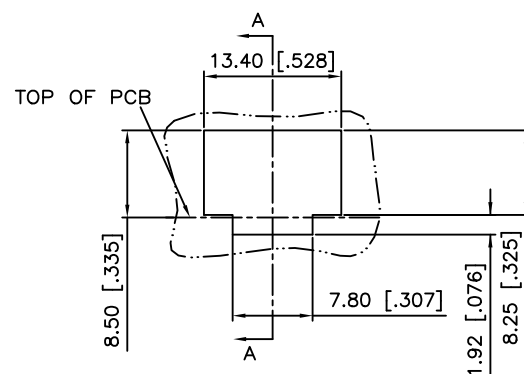
CONTACT PLATING CODE
0 = GOLD FLASH
1 = 15u"
2 = 30u"
3 = 50u"

NOTES:

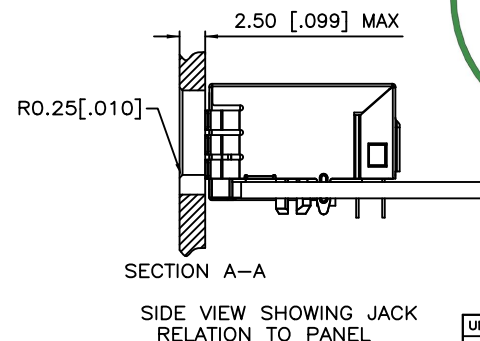
MATERIALS:

HOUSING: HIGH TEMPERATURE THERMOPLASTIC.
FLAMMABILITY RATING UL 94V-0
COLOUR: BLACK
CONTACTS: PHOSPHOR BRONZE
PLATING: GOLD PLATING ON MATING SURFACES.
SEE PART NUMBER SYSTEM OPTION
50 u" [1.27 MICRONS] MIN. NICKEL UNDERPLATE.
100 u" [2.54 MICRONS] MIN. MATTE TIN ON
SOLDER AREA.

SHELL: BRASS
NICKEL PLATING WITH TIN DIPPED ON PCB TAIL.



RECOMMENDED PANEL CUTOUT



SECTION A-A

SIDE VIEW SHOWING JACK
RELATION TO PANEL



UNLESS SPECIFIED OTHERWISE		DRAWN	Jack Wang	DATE	FEB 27/07
PRIMARY UNITS	MILLIMETER	CHECKED	MT.Chen	DATE	FEB 27/07
SECONDARY	INCH	M.E. APP'D	YM Lee	DATE	FEB 27/07
REFERENCE IN PARENTHESES		Q.A. APP'D			
GENERAL TOLERANCES		DWG APPR.			
1 DECIMAL PLACE		ENG. REL. NO.			
2 DECIMAL PLACES		REF.			
3 DECIMAL PLACES		THIRD ANGLE PROJECTION			
ANGULAR DEGREES		DO NOT SCALE DRAWING			

Amphenol Canada Corp.		www.amphenolcanada.com
TITLE		RJ ULTRA LOW PROFILE MODULAR JACK 8 POSITIONS, 8 CONTACTS, SHIELD WITH REAR PANEL MOUNT TABS. WITHOUT FLANGE-RoHS COMPLIANT
DWG. NO.		P- RJULE-4X182-01
CODE ID NO. 03554		DWG SIZE: C SCALE: N/A SHEET 1 OF 1

Mouser Electronics

Authorized Distributor

Click to View Pricing, Inventory, Delivery & Lifecycle Information:

[Amphenol:](#)

[RJULE-42182-01](#)