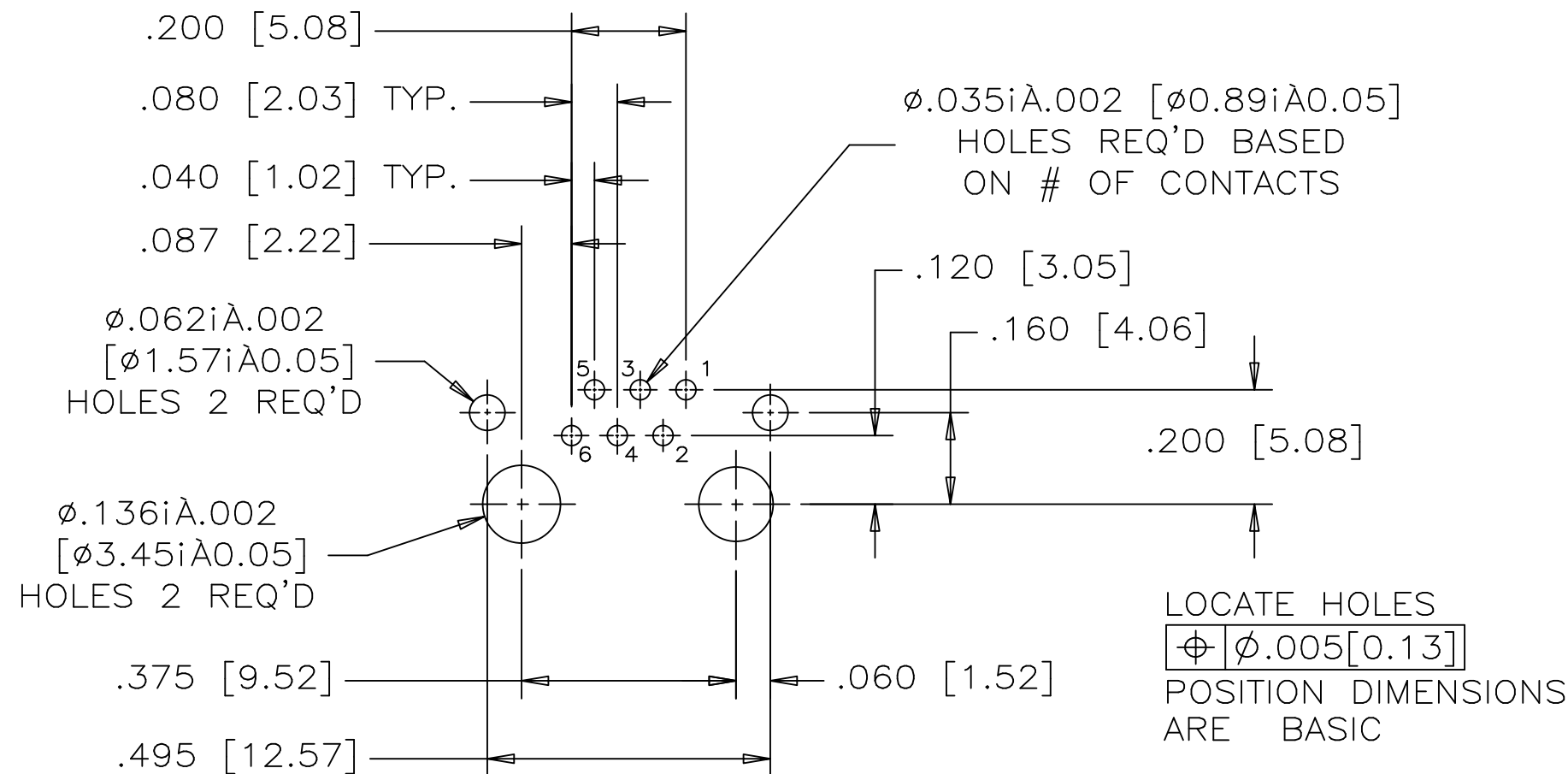
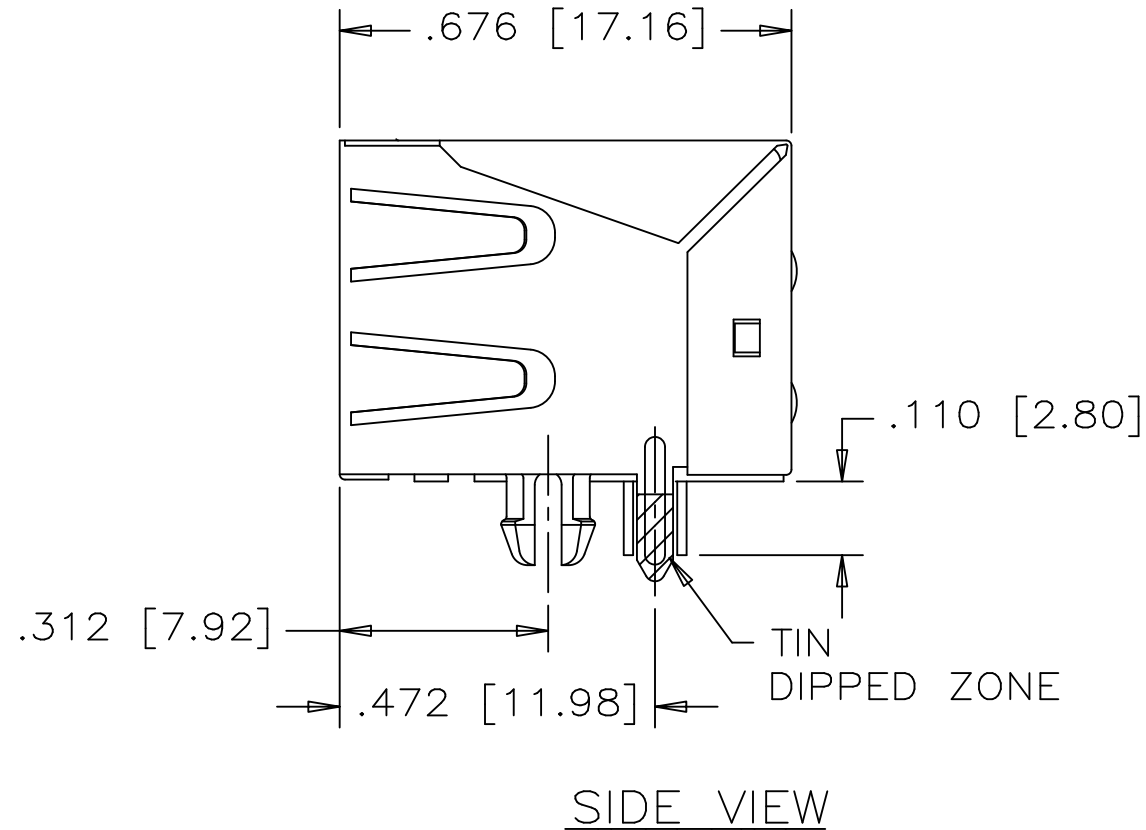
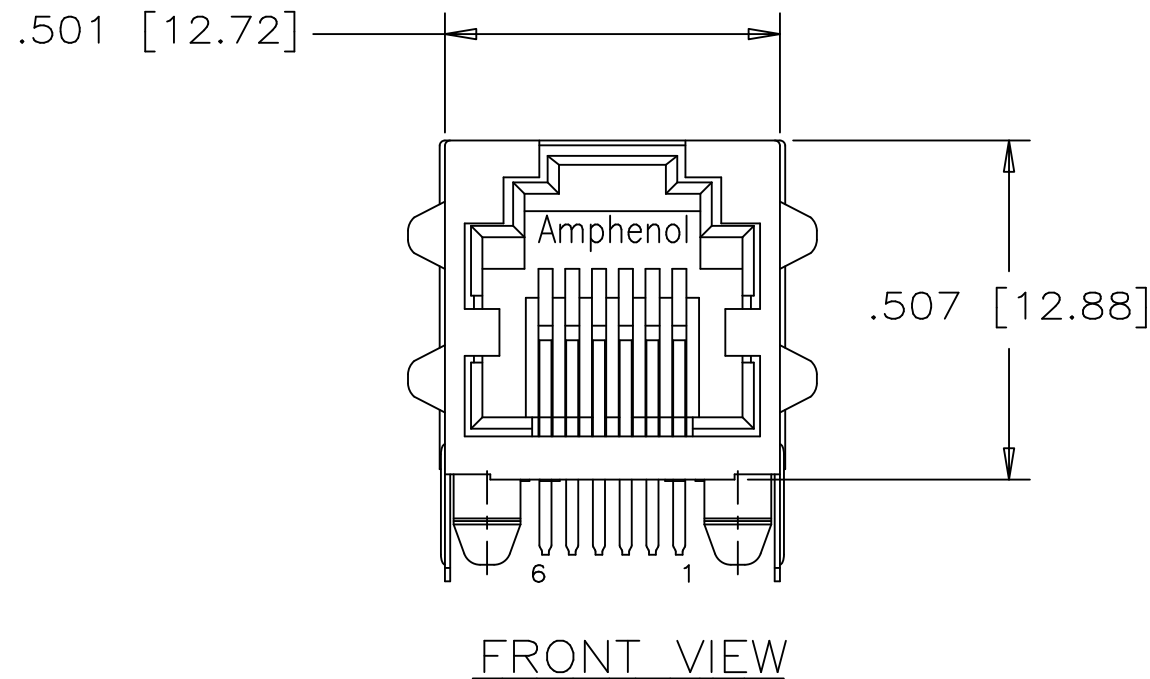
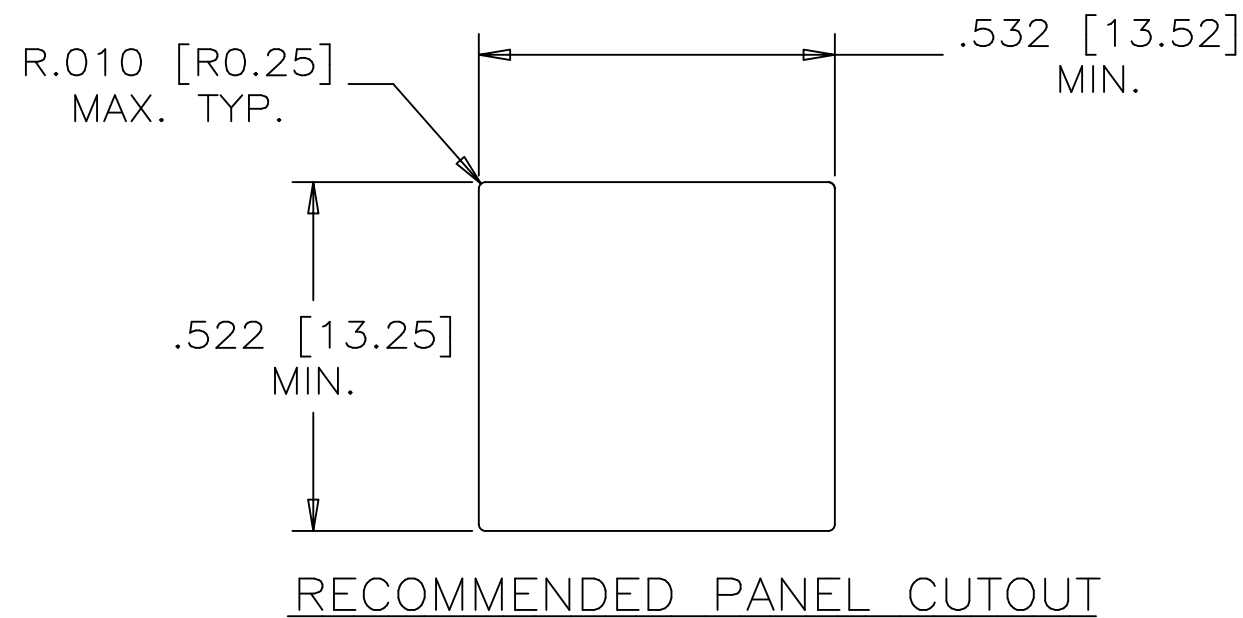


		REVISIONS		
SYM	ZONE	ECN, ERN NO.	DATE	APPRD.
A		PROPOSAL	OCT.25/04	K.L.
B		PROPOSAL	MAR.29/06	L.CHAN
C		PROPOSAL	DEC.29/09	L.CHAN
D		ADD OPERATING TEMPERATURE	MAY30/13	L.CHAN



RECOMMENDED P.C.B. LAYOUT
(COMPONENT SIDE OF BOARD)
(RJE01-662-01 SHOWN, FOOTPRINT FOR
OTHER PART NUMBERS BASED ON
OF CONTACTS & RELATED POSITIONS)



- MATERIALS:
HOUSING: HIGH TEMPERATURE ENGINEERING THERMOPLASTIC
FLAMMABILITY RATING UL 94V-0, BLACK

CONTACTS: PHOSPHOR BRONZE
PLATING: 50 μ " [1.27 MICRONS]
MIN. GOLD ON MATING SURFACES.
50 μ " [1.27 MICRONS]
MIN. NICKEL UNDERPLATE
100 μ " [2.54 MICRONS]
MIN. MATTE TIN ON CONTACT TAILS.

SHIELD: COPPER ALLOY
PLATING: NICKEL WITH TIN DIPPED PCB TAILS.
- ENVIRONMENTAL:
OPERATING TEMPERATURE: -55°C to 85 °C
- RECOMMENDED SOLDERING TEMPERATURE:
WAVE SOLDERING OR REFLOW SOLDERING AT 260°C
MAXIMUM FOR 5 SEC MAXIMUM.

PART NUMBER: RJE01-6X2-01

CONTACTS:
2 = 2 CONTACTS LOADED IN POSITION 3 & 4.
4 = 4 CONTACTS LOADED IN POSITION 2 TO 5.
6 = 6 CONTACTS LOADED IN POSITION 1 TO 6.



DRAWN	L.CHAN	DATE	OCT.25/04	Amphenol Canada Corp.			
DESIGNED							
CHECKED	K.LAMBIE	DATE	OCT.25/04	TITLE HIGH SPEED MODULAR JACK, SINGLE PORT, EMI QUIET, 6 POSITION, SHIELDED WITH SIDE TABS- RoHS COMPLIANT			
I. E. APPRD.							
Q. A. APPRD.							
DWG. APPRD.							
ENG. REL. NO.		DWG	DRAWING NO.	P-RJE01-6X2-01		REV. D	
REF. EAR: RJ13076							
DIMENSIONS ARE IN	CODE ID. NO.	SCALE	WT.	SURF.	SHEET	1	OF 1
INCHES [mm]	03554						

THIS DOCUMENT CONTAINS PROPRIETARY INFORMATION AND SUCH INFORMATION
MAY NOT BE DISCLOSED TO OTHERS FOR ANY PURPOSE OR USED FOR MANUFACTURING
PURPOSES WITHOUT WRITTEN PERMISSION FROM AMPHENOL CANADA CORP.

Mouser Electronics

Authorized Distributor

Click to View Pricing, Inventory, Delivery & Lifecycle Information:

[Amphenol:](#)

[RJE01-662-01](#)