

| DOCUMENT NO. | | SHEET 1 OF 5 | | REV | |
|----------------|--|--------------|--|--|--|
| HSB-D4SXXDXXXX | | B | | A | |
| REVISIONS | | DATE | | DESCRIPTION | |
| A | | 05/20/2011 | | PRODUCTION RELEASE | |
| B | | 9/18/12 | | CL(11) SEE CHANGE NOTICE ECN: B3865 | |

Top view of the connector. Dimensions include a width of .355 MAX. and a height of .303 MAX. A mating surface is indicated on the left. A circular feature is dimensioned as .016 ± .002 TYP. with a tolerance of .0200. A note indicates a .150 MIN. THROUGH HOLE in 2 PLACES.

Front view of the connector. Dimensions include a width of .355 MAX. and a height of .303 MAX. A note indicates a .150 MIN. THROUGH HOLE in 2 PLACES. The pin layout is shown with dimensions (A) and (B).

Side view of the connector. Dimensions include a width of .355 MAX. and a height of .303 MAX. A note indicates a .150 MIN. THROUGH HOLE in 2 PLACES. The pin layout is shown with dimensions (A) and (B).

PARTIAL SECTION A-A

MADE FROM MHSB-D4SXXDXXXX

SEE SHEET 5

NOTES:

THE USE OF THIS DOCUMENT IS UNLIMITED. HOWEVER, DOCUMENTS REFERENCED HEREON MAY CONTAIN LIMITED RIGHTS DATA.

| DOCUMENT NO. | | SHEET 1 OF 5 | | REV | |
|----------------|--|--------------|--|--|--|
| HSB-D4SXXDXXXX | | B | | A | |
| REVISIONS | | DATE | | DESCRIPTION | |
| A | | 05/20/2011 | | PRODUCTION RELEASE | |
| B | | 9/18/12 | | CL(11) SEE CHANGE NOTICE ECN: B3865 | |

| PRO/ENGINEER INFORMATION | | DATE | | DESCRIPTION | |
|--------------------------|--|------|--|-------------|--|
| Pro/Engineer Used: | | | | | |
| HSB-D4SXXDXXXX | | | | | |
| Dwg. No. HSB-D4SXXDXXXX | | | | | |
| Dwg. No. HSB-D4SXXDXXXX | | | | | |

| UNLESS OTHERWISE SPECIFIED | | SPECIFICATIONS | | PARTS LIST | | NOTE | |
|---------------------------------|--|----------------|--|----------------------|--|------|--|
| LINEAR DIMENSIONS ARE IN INCHES | | MATERIAL SPEC. | | AMPHENOL CORPORATION | | | |
| TOLERANCES: | | N/A | | | | | |
| .XXX = ± .0005 | | | | | | | |
| .XXX = ± .010 | | | | | | | |
| .XX = ± .03 | | | | | | | |
| .X = ± .1 | | | | | | | |
| DIM & TOL. PER ASME Y14.5M. | | | | | | | |
| 90° PER MIL-STD-31000. | | | | | | | |
| OTHER AMPHENOL DATA PER 9-3800 | | | | | | | |
| LEGEND: | | | | | | | |
| = FLAG NOTE CALL OUT | | | | | | | |
| = REFERENCE ONLY | | | | | | | |

| PRO/ENGINEER INFORMATION | | DATE | | DESCRIPTION | |
|--------------------------|--|------|--|-------------|--|
| Pro/Engineer Used: | | | | | |
| HSB-D4SXXDXXXX | | | | | |
| Dwg. No. HSB-D4SXXDXXXX | | | | | |
| Dwg. No. HSB-D4SXXDXXXX | | | | | |

| DOCUMENT NO. | | SHEET 1 OF 5 | | REV | |
|----------------|--|--------------|--|--|--|
| HSB-D4SXXDXXXX | | B | | A | |
| REVISIONS | | DATE | | DESCRIPTION | |
| A | | 05/20/2011 | | PRODUCTION RELEASE | |
| B | | 9/18/12 | | CL(11) SEE CHANGE NOTICE ECN: B3865 | |

IMAGED / Sep. 20 2012, 10:26:17 AM

HSB-D4S

XXD

X

XX

X

X

X

X

X

X

X

X

X

X

X

X

X

X

X

X

X

X

X

STACKER

REQUIRED FIELD

CONTACT TERMINATION FINISH

| | |
|---|---|
| 2 | GOLD PLATED IN ACCORDANCE WITH MIL-G-45204, TYPE II, .000030 MIN THICK GOLD OVER .000050 MIN THICK NICKEL. |
| 5 | TIN PLATED IN ACCORDANCE WITH ASTM B545, .00010 MIN THICK MATTE TIN OVER .00010 MIN THICK NICKEL. (5) |
| 6 | TIN-LEAD PLATED IN ACCORDANCE WITH SAF-AMS-P-81728, .00010 MIN THICK TIN-LEAD OVER .00010 MIN THICK COPPER. |

TERMINATION

| TYPE | STICKOUT (DIM E) |
|-----------------------------|------------------|
| 22 PCB, STRAIGHT, .016 DIA. | .100 |
| 23 PCB, STRAIGHT, .016 DIA. | .130 |
| 24 PCB, STRAIGHT, .016 DIA. | .160 |
| 28 PCB, STRAIGHT, .016 DIA. | .280 |

BRUSH WIRE PLATING (CONTACT INTERFACE)

| | |
|---|---------------------------------|
| M | 0.000050 Au MIN THK OVER NICKEL |
| C | 0.000020 Au MIN THK OVER NICKEL |

DIFFERENTIAL SIGNAL

| CONNECTOR DIMENSIONS | | |
|------------------------|-------------|-------------|
| NUMBER OF DIFF SIGNALS | DIMENSION A | DIMENSION B |
| 03 | 1.375 | 1.075 |
| 05 | 1.725 | 1.425 |
| 07 | 2.075 | 1.775 |
| 10 | 2.775 | 2.475 |
| 13 | 3.475 | 3.175 |

HIGHSPEED/HIGH DENSITY BRUSH

NOTES: SEE SHEET 5

THE USE OF THIS DOCUMENT IS UNLIMITED. HOWEVER, DOCUMENTS REFERENCED HEREON MAY CONTAIN LIMITED RIGHTS DATA.

HSB-D4SXXDXXXX

SHEET 2 OF 5

REV B

HSB-D4SXXDXXXX

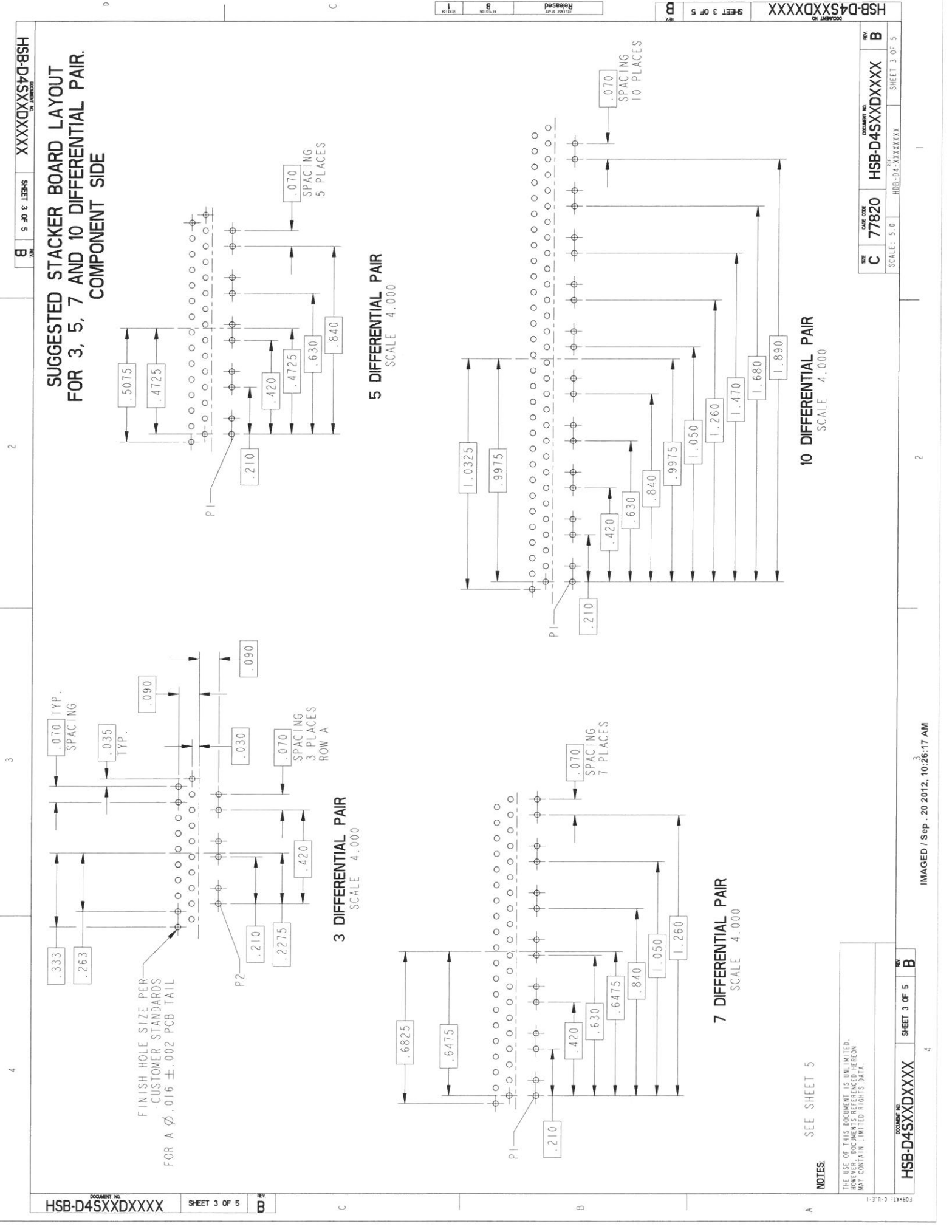
SHEET 2 OF 5

REV B

HSB-D4SXXDXXXX

SHEET 2 OF 5

REV B



DOCUMENT NO. HSB-D4SXXDXXXXX

SHEET 3 OF 5

REV. B

NOTES: SEE SHEET 5

THE USE OF THIS DOCUMENT IS UNLIMITED. HOWEVER, DOCUMENTS REFERENCED HEREON MAY CONTAIN LIMITED RIGHTS DATA.

DOCUMENT NO. HSB-D4SXXDXXXXX

SHEET 3 OF 5

REV. B

IMAGED / Sep . 20 2012. 10:26:17 AM

SUGGESTED STACKER BOARD LAYOUT
FOR 3, 5, 7 AND 10 DIFFERENTIAL PAIR.
COMPONENT SIDE

5 DIFFERENTIAL PAIR
SCALE 4.000

7 DIFFERENTIAL PAIR
SCALE 4.000

10 DIFFERENTIAL PAIR
SCALE 4.000

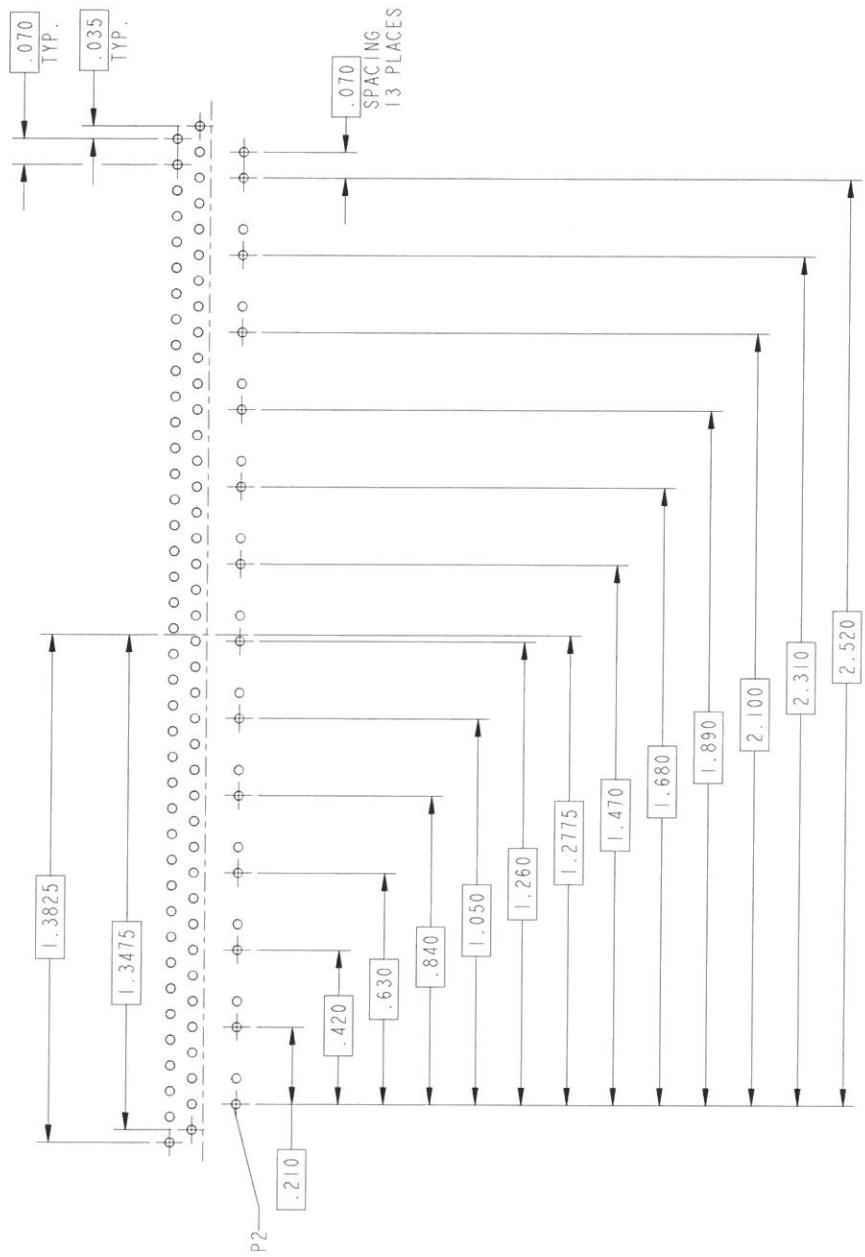
DOCUMENT NO. HSB-D4SXXDXXXXX

SHEET 3 OF 5

REV. B

SIZE C CASE CODE 77820 DOCUMENT NO. HSB-D4SXXDXXXXX REV. B SCALE: 5.0 HSB-D4SXXDXXXXX SHEET 3 OF 5

SUGGESTED STACKER BOARD LAYOUT
FOR 13 DIFFERENTIAL PAIR.
COMPONENT SIDE

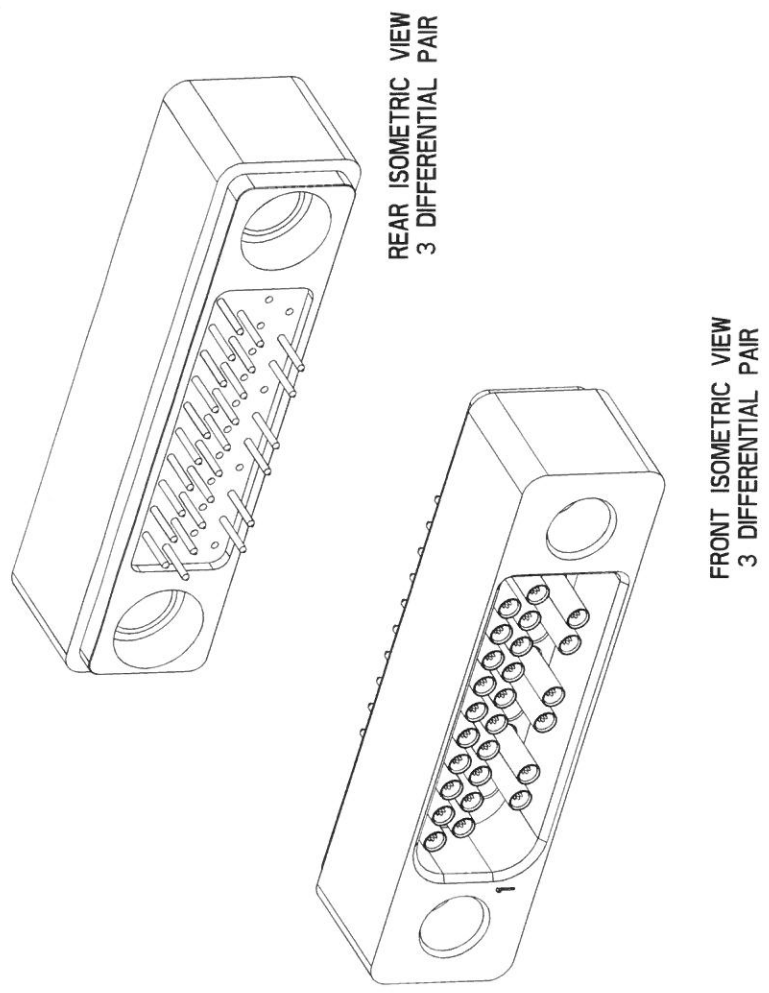


13 DIFFERENTIAL PAIR
SCALE 4.000

SEE SHEET 5

NOTES:

THE USE OF THIS DOCUMENT IS UNLIMITED.
HOWEVER, DOCUMENTS REFERENCED HEREON
MAY CONTAIN LIMITED RIGHTS DATA.



5. RoHS COMPLIANT FOR TERMINATION FINISH TIN PLATE OVER NICKEL.
4. FOR MATING CONNECTOR ASSEMBLY SEE DRAWING HSB-M4-XXXXXXX.
3. BRUSH CONTACTS COME ASSEMBLED AND ARE NOT REPLACEABLE.
2. INDICATED DIMENSION IS TO POINT OF ELECTRICAL ENGAGEMENT.
1. INK STAMP BLACK "AMPHENOL" 77820, PART NUMBER AND DATE CODE ON INDICATED SURFACE PER 9-3856-5. DATE CODE PER 9-3895. CHARACTERS TO BE .062±.020 HIGH. ADDITIONAL INFORMATION MAY BE REQUESTED BY PURCHASE ORDER.

NOTES:
THE USE OF THIS DOCUMENT IS UNLIMITED.
HOWEVER, DOCUMENTS REFERENCED HEREON
MAY CONTAIN LIMITED RIGHTS DATA.

DOCUMENT NO.
HSB-D4SXXDXXXX

SHEET 5 OF 5

REV
B

Mouser Electronics

Authorized Distributor

Click to View Pricing, Inventory, Delivery & Lifecycle Information:

[Amphenol:](#)

[HSB-D4S03DM222X](#)