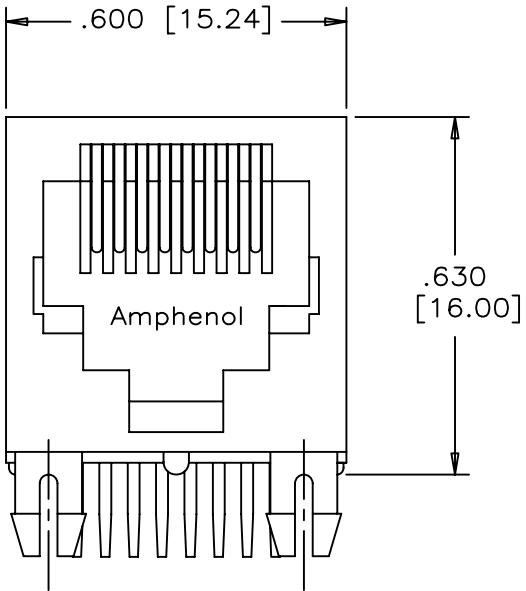
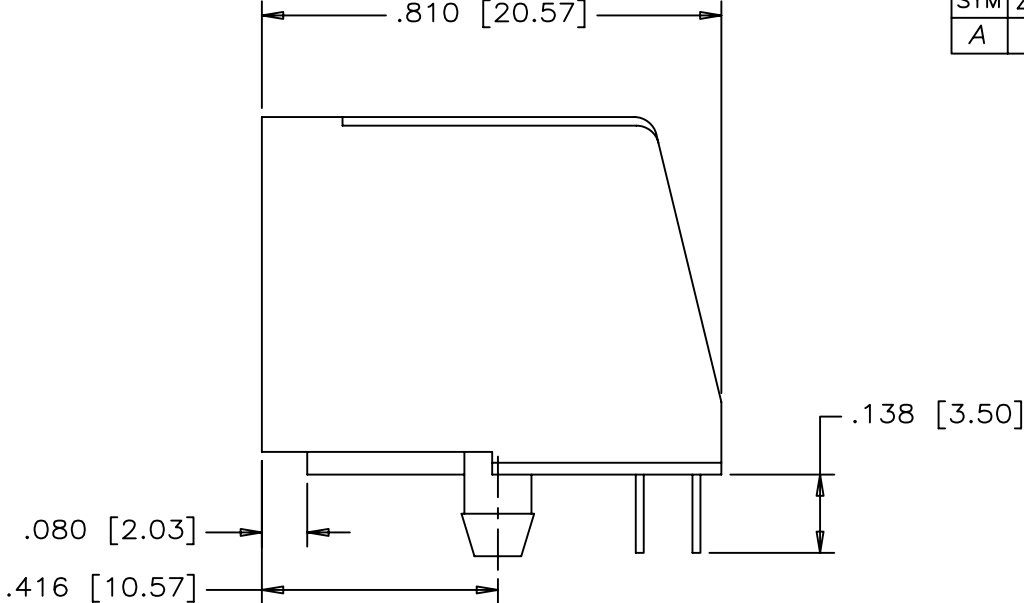


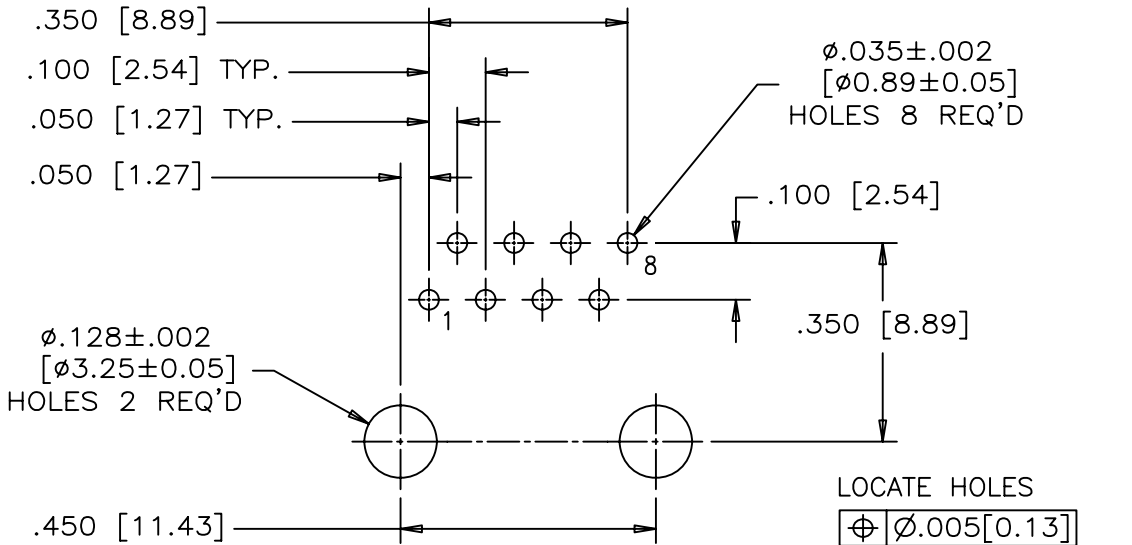
REVISIONS				
SYM	ZONE	ECN, ERN NO.	DATE	APPRD.
A		PROPOSAL	APR28/06	L.CHAN



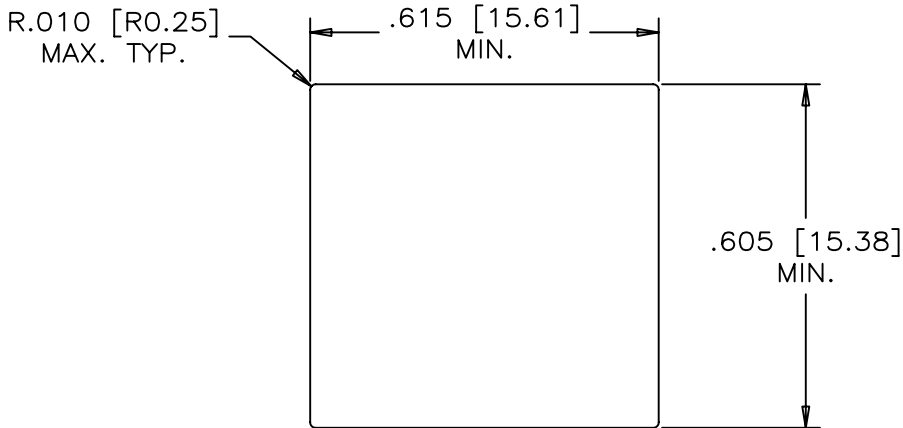
FRONT VIEW



SIDE VIEW



RECOMMENDED P.C.B. LAYOUT  
(COMPONENT SIDE OF BOARD)



RECOMMENDED PANEL CUTOUT

**MATERIALS:**  
 PLASTIC HOUSING: ENGINEERING THERMOPLASTIC  
 FLAMMABILITY RATING UL94V-0

**CONTACTS:**  
 PHOSPHOR BRONZE  
 PLATING: REFER TO PART NUMBER FOR GOLD  
 THICKNESS ON MATING SURFACES.  
 50 μ" [1.27 MICRONS]  
 MIN. NICKEL UNDERPLATE.  
 100 μ" [2.54 MICRONS]  
 MIN. MATTE-TIN OR GOLD FLASH ON CONTACT TAILS.

**RECOMMENDED SOLDERING TEMPERATURE:**  
 WAVE SOLDERING OR REFLOW SOLDERING AT 260°C MAXIMUM  
 FOR 5 SEC MAXIMUM

**PART NUMBER:** RJE02-188-0X10-H

**GOLD PLATING**  
 1 = 6 μINCH  
 2 = 15 μINCH  
 3 = 30 μINCH  
 4 = 50 μINCH

THIS DOCUMENT CONTAINS PROPRIETARY INFORMATION AND SUCH INFORMATION  
 MAY NOT BE DISCLOSED TO OTHERS FOR ANY PURPOSE OR USED FOR MANUFACTURING  
 PURPOSES WITHOUT WRITTEN PERMISSION FROM AMPHENOL CANADA CORP.

DRAWN PAULW	DATE APR28/06	Amphenol Canada Corp.		
DESIGNED				
CHECKED CHIGOW	APR28/06	TITLE MODULAR JACK, SINGLE PORT, HIGH PROFILE, 8 POSITION, 8 CONTACTS UNSHIELDED - RoHS COMPLIANT		
I. E. APPRD.				
Q. A. APPRD.		DWG DRAWING NO. P-RJE02-188-0X10-H		
DWG. APPRD.				
ENG. REL. NO. EAR # A060422		REF.		
DIMENSIONS ARE IN INCHES [mm]	CODE ID. NO. 03554	SCALE	WT. -----	SURF. -----
		SHEET 1 OF 1		

Amphenol Canada Corp.

TITLE MODULAR JACK, SINGLE PORT,  
HIGH PROFILE, 8 POSITION, 8 CONTACTS  
UNSHIELDED - RoHS COMPLIANT

DWG DRAWING NO. P-RJE02-188-0X10-H

REV. A

SCALE WT. ----- SURF. ----- SHEET 1 OF 1

# Mouser Electronics

Authorized Distributor

Click to View Pricing, Inventory, Delivery & Lifecycle Information:

[Amphenol:](#)

[RJE02-188-0110H](#)