

REVISIONS				
REV.	EAR	DESCRIPTION	DATE	APPROVED
B	13741	NOTE UPDATES	JUL06/10	K.L

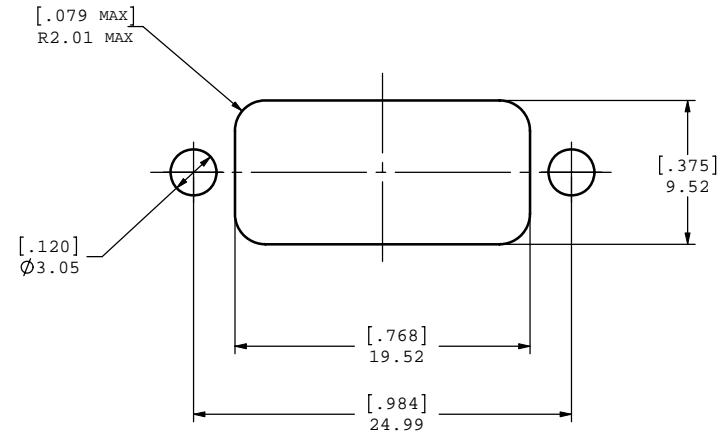
MDB-E09PE-765 IS SHOWN

- NOTES:
- MATERIAL:
 - SHELL: ZINC ALLOY WITH 50 MICRO INCH MINIMUM NICKEL PLATING,
 - CONTACTS: COPPER ALLOY 30 MICRO INCH GOLD OVER 50 MICRO INCH NICKEL PLATING,
 - HOUSING: THERMOPLASTIC RESIN, UL94V-0
 - GASKET: SILICONE RUBBER,
 - SCREWS: STAINLESS STEEL,
 - DUST COVER: SILICONE RUBBER.
 - FEATURES: SEALED CONNECTOR IN THE MATED AND UNMATED CONDITIONS.
 - OPERATING TEMPERATURE: -40°C TO +105°C.
 - ENVIRONMENT PERFORMANCE: IP67.
 - CONNECTOR IS RoHS COMPLIANT PER EU DIRECTIVE 2002/95/EC AND AMENDMENTS.
 - PART NUMBER FOR ORDER:
 - MDB-E09PE-760 - WITH DUST COVER AND SCREWS.(SEE PAGE 2 FOR MORE INFORMATION)
 - MDB-E09PE-765 - NO DUST COVER AND SCREWS.

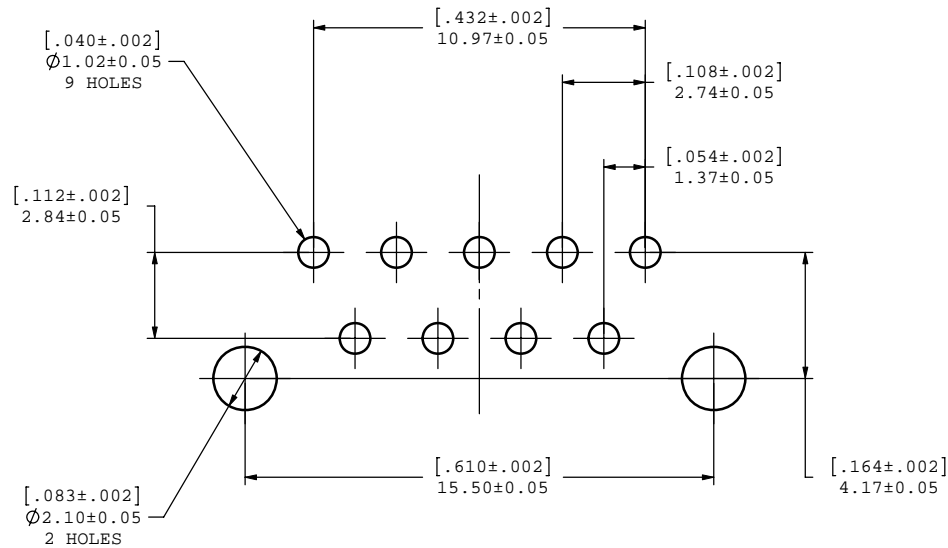


UNLESS OTHERWISE SPECIFIED DIMENSIONS ARE IN MILLIMETER TOLERANCES ARE:		APPROVALS	DATE	Amphenol Canada Corp.	
DECIMALS		DRAWN	S.SEMENOV		
ANGLES		DESIGNED	S.SEMENOV		
.XX ±.10		CHECKED			
.X ±.25		QA APP'D		TITLE	
MATERIAL AND FINISH		IE APP'D			
REF.		DWG APP'D		SIZE	DWG. NO.
CODE IDENT. NO.		A.GREEN	OCT06/06	C	P-MDB-E09PE-76X
				SCALE	PROJECT
				3:1	MDB
					SHEET
					1 OF 2

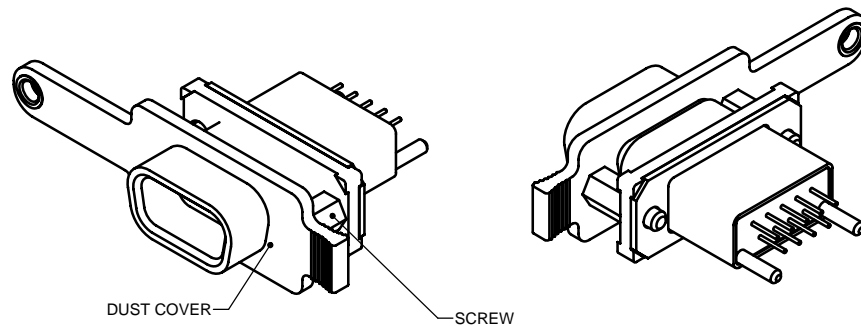
REVISIONS				
REV.	EAR	DESCRIPTION	DATE	APPROVED
B	13741	NOTE UPDATES	JUL06/10	K.L



RECOMMENDED PANEL CUTOUT
DIMENSIONS FOR REFERENCE ONLY



RECOMMENDED P.C.B. LAYOUT

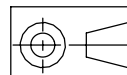


MDB-E09PE-760 IS SHOWN

FOR MORE INFORMATION ABOUT DUST COVER,
SEE DRAWING P-MDB-227-093-205BP



UNLESS OTHERWISE SPECIFIED DIMENSIONS ARE IN MILLIMETER TOLERANCES ARE:		APPROVALS	DATE	Amphenol Canada Corp.		
		DRAWN S.SEMENOV	OCT06/06			
DECIMALS .XX ±.10 .X ±.25	ANGLES ± 1°	DESIGNED S.SEMENOV	OCT06/06	TITLE RUGGED 9 PIN, D-SUB CONNECTOR, VERTICAL MOUNT		
MATERIAL AND FINISH		CHECKED				
		QA APP'D				
REF.		IE APP'D		SIZE C	DWG. NO. P-MDB-E09PE-76X	REV. B
		DWG APP'D A.GREEN	OCT06/06	SCALE 3:1	PROJECT MDB	SHEET 2 OF 2
CODE IDENT. NO.						



Mouser Electronics

Authorized Distributor

Click to View Pricing, Inventory, Delivery & Lifecycle Information:

[Amphenol:](#)

[MDB-E09PE-765](#) [MDBE09PE760](#)