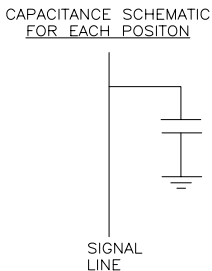
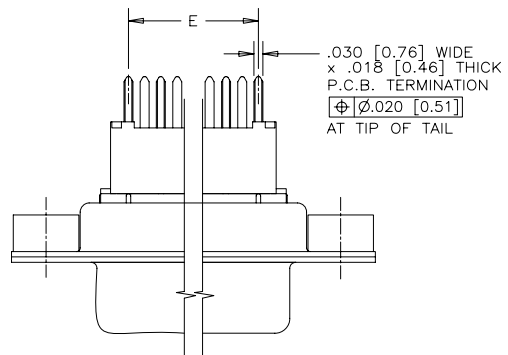


| REVISIONS | | | |
|-----------|-----------------------------|----------|--------|
| REV | ECN, ERN NO. | DATE | APPRD. |
| C | PRODUCT DRAWING (EAR 13733) | JUN23/10 | K.L. |



ORDERING CODE: F C E 1 7 - E 0 9 P N - 2 E 0 G

SERIES
FCE17=FILTERED D-SUB, RoHS

SIZE/NUMBER OF CONTACTS
E09, A15, B25, OR C37

CONNECTOR STYLE
P=PIN
S=SOCKET

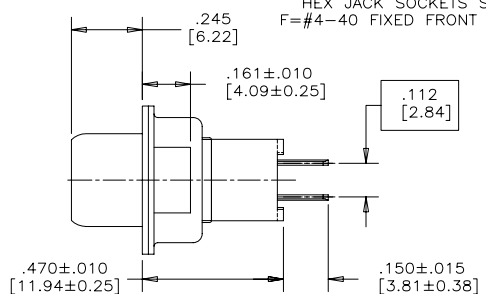
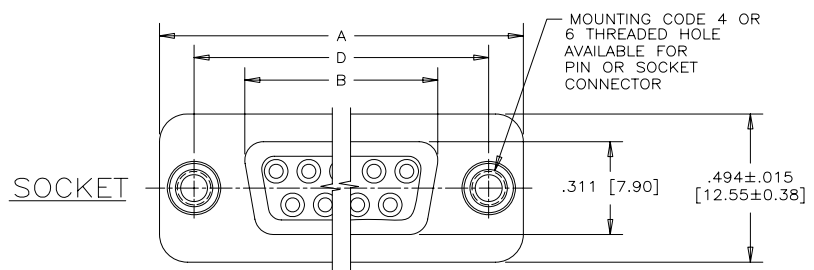
TERMINATION TYPE
N=VERTICAL MOUNT PC TAIL, .470 [11.94] FLANGE TO BOARD

MOUNTING
2=120[3.05] DIA THROUGH HOLE
3=#4-40 UNC SELF-LOCKING THREAD
4=#4-40 UNC THREAD
5=#4-40 THREADED STANDOFF
6=M3 x 0.5 THREAD
A=#4-40 THREADED STANDOFF WITH BOARDLOCK
E=CODE 4 MOUNTING WITH #4-40 UNC HEX JACK SOCKETS SUPPLIED
F=#4-40 FIXED FRONT JACK SOCKETS

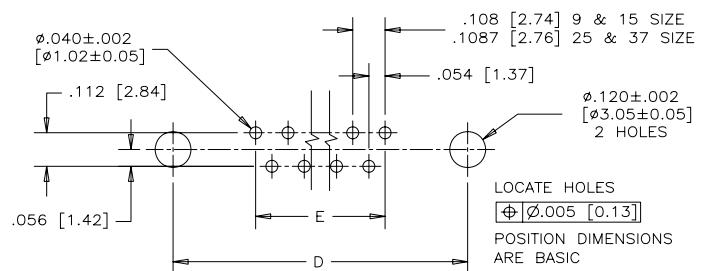
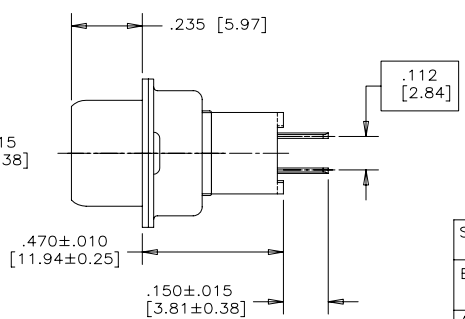
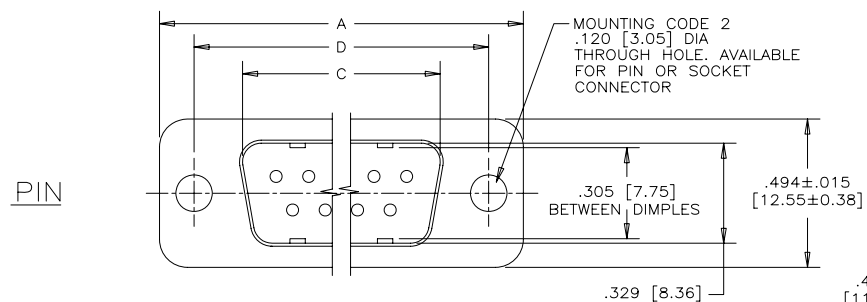
CONTACT FINISH/GOLD THICKNESS
NO DIGIT=STANDARD 15 MICROINCHES [0.38 MICRONS] GOLD ON MATING AREA
G=50 MICROINCHES [1.27 MICRONS] GOLD ON MATING AREA
K=30 MICROINCHES [0.76 MICRONS] GOLD ON MATING AREA

MODIFIER
0=STANDARD

FILTER CAPACITANCE
D=50 pF 5=1000 pF
B=100 pF 7=1200 pF
O=180 pF 6=1300 pF
T=220 pF J=1500 pF
F=330 pF E=2200 pF
L=380 pF 9=5600 pF
1=470 pF 8=47000 pF
2=680 pF N=NO FILTERS
4=820 pF
REFER TO AMPHENOL CATALOGUE FOR FILTER PERFORMANCE CHARACTERISTICS



- NOTES:
- 1) MATERIALS: ALL MATERIALS ARE RoHS COMPLIANT.
 - SHELL: STEEL, TIN PLATED
 - CONTACTS: PHOSPHOR BRONZE, GOLD PLATED OVER 50µ" [1.27 MICRONS] NICKEL IN THE MATING AREA AND 100µ" [2.54 MICRONS] MIN. MATTE TIN ON THE TAILS.
 - INSULATOR: ENGINEERING THERMOPLASTIC, GLASS REINFORCED, UL FLAMMABILITY RATING 94V-0, COLOUR: BLACK
 - BOARDLOCK: COPPER ALLOY, TIN PLATED.
 - MOUNTING HARDWARE, STEEL OR COPPER ALLOY, TIN OR NICKEL PLATED.
 - 2) CONTACT RESISTANCE: 15 MILLIOHMS MAXIMUM
 - 3) INSULATION RESISTANCE: 3000 MEGOHMS MINIMUM
 - 4) CURRENT RATING: 5 AMPS MAXIMUM
 - 5) OPERATING TEMPERATURE: -40°C TO 85°C
 - 6) TOLERANCE ±.005 [0.13] UNLESS INDICATED OTHERWISE.



| SIZE | STYLE | A±.015 [0.38] | B±.005 [0.13] | C±.005 [0.13] | D±.005 [0.13] | E BSC. |
|------|--------|---------------|---------------|---------------|---------------|---------------|
| E09 | PIN | 1.213 [30.81] | ----- | .666 [16.92] | .984 [24.99] | .432 [10.97] |
| | SOCKET | ----- | .643 [16.33] | ----- | ----- | ----- |
| A15 | PIN | 1.541 [39.14] | ----- | .994 [25.25] | 1.312 [33.32] | .756 [19.20] |
| | SOCKET | ----- | .971 [24.66] | ----- | ----- | ----- |
| B25 | PIN | 2.088 [53.04] | ----- | 1.534 [38.96] | 1.852 [47.04] | 1.304 [33.12] |
| | SOCKET | ----- | 1.511 [38.38] | ----- | ----- | ----- |
| C37 | PIN | 2.729 [69.32] | ----- | 2.182 [55.42] | 2.500 [63.50] | 1.956 [49.68] |
| | SOCKET | ----- | 2.159 [54.84] | ----- | ----- | ----- |

| | | | |
|-------------------------------|--|--------------------|--|
| DRAWN A.CHENG | | DATE JAN12/06 | |
| DESIGNED | | | |
| CHECKED K.LAMBIE | | JAN12/06 | |
| I. E. APPRD. | | | |
| Q. A. APPRD. | | | |
| DWG. APPRD. | | | |
| ENG. REL. NO. | | | |
| REF. EAR 12900 | | | |
| DIMENSIONS ARE IN INCHES [mm] | | CODE ID. NO. 03554 | |

Amphenol Canada Corp.

FCE17 SERIES FILTERED D-SUB CONNECTOR, PIN & SOCKET, VERTICAL MOUNT P.C.B. TAIL, .470 [11.94] FLANGE TO BOARD, RoHS COMPLIANT

DWG C

DRAWING NO. P-FCE17-XXXXN-XX0X

REV. C

SCALE 3/1

WT. -----

SURF. -----

SHEET 1 of 2

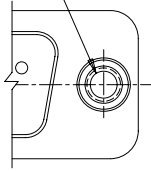
THIS DOCUMENT CONTAINS PROPRIETARY INFORMATION AND SUCH INFORMATION MAY NOT BE DISCLOSED TO OTHERS FOR ANY PURPOSE OR USED FOR MANUFACTURING PURPOSES WITHOUT WRITTEN PERMISSION FROM AMPHENOL CANADA CORP.

SEE SHEET 2 FOR ADDITIONAL MOUNTING OPTIONS

ADDITIONAL MOUNTING OPTIONS AVAILABLE
FOR PIN OR SOCKET CONNECTOR

| REVISIONS | | | |
|-----------|-----------------------------|----------|--------|
| REV | ECN, ERN NO. | DATE | APPRD. |
| C | PRODUCT DRAWING (EAR 13733) | JUN23/10 | K.L. |

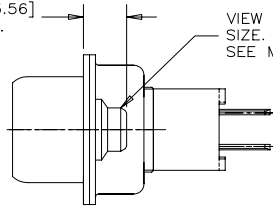
#4-40 UNC
SELF-LOCKING
THREAD



PARTIAL FRONT VIEW

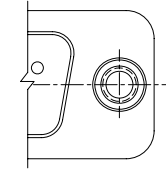
MOUNTING CODE 3

.140 [3.56]
MAX.



END VIEW

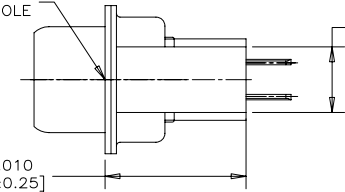
VIEW FOR E09, A15 & B25
SIZE. FOR C37 SIZE VIEW
SEE MOUNTING CODE 4, SHEET 1.



PARTIAL FRONT VIEW

MOUNTING CODE 5

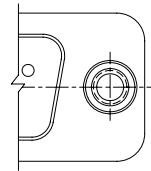
4-40 THREADED
THROUGH HOLE



END VIEW

.219 [5.56]
DIA. STANDOFF

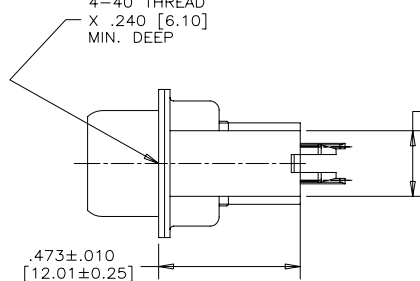
.470±.010
[11.94±0.25]



PARTIAL FRONT VIEW

MOUNTING CODE A

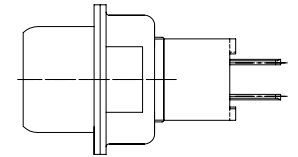
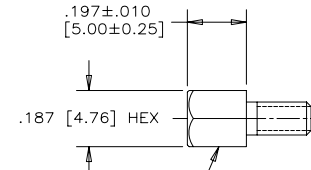
4-40 THREAD
X .240 [6.10]
MIN. DEEP



END VIEW

.219±.010
[5.56±0.25]
DIA. STANDOFF
WITH BOARDLOCK

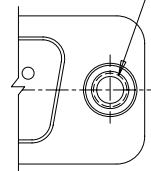
.473±.010
[12.01±0.25]



END VIEW

MOUNTING CODE E
#4-40 UNC THREADED
HEX JACK SOCKET
(2 SUPPLIED
PER CONNECTOR)

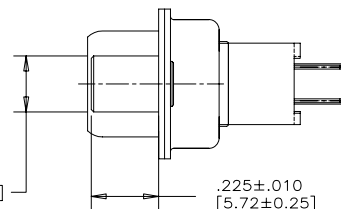
MOUNTING CODE E



PARTIAL FRONT VIEW

MOUNTING CODE F

#4-40 UNC THREADED
THROUGH HOLE



END VIEW

.187±.005
[4.75±0.13]
DIA

.225±.010
[5.72±0.25]



| | | | |
|-------------------|--------------|------|----------|
| DRAWN | A.CHENG | DATE | JAN12/06 |
| DESIGNED | | | |
| CHECKED | K.LAMBIE | DATE | JAN12/06 |
| I. E. APPRD. | | | |
| Q. A. APPRD. | | | |
| DWG. APPRD. | | | |
| ENG. REL. NO. | | | |
| REF. | EAR 12900 | | |
| DIMENSIONS ARE IN | CODE ID. NO. | | |
| INCHES [mm] | 03554 | | |

Amphenol Canada Corp.

FCE17 SERIES FILTERED D-SUB CONNECTOR,
PIN & SOCKET, VERTICAL MOUNT P.C.B. TAIL,
.470 [11.94] FLANGE TO BOARD, RoHS COMPLIANT

DWG. DRAWING NO. REV.
C P-FCE17-XXXXN-XX0X C

SCALE 3/1 WT. SURF. SHEET 2 OF 2

THIS DOCUMENT CONTAINS PROPRIETARY INFORMATION AND SUCH INFORMATION
MAY NOT BE DISCLOSED TO OTHERS FOR ANY PURPOSE OR USED FOR MANUFACTURING
PURPOSES WITHOUT WRITTEN PERMISSION FROM AMPHENOL CANADA CORP.

Mouser Electronics

Authorized Distributor

Click to View Pricing, Inventory, Delivery & Lifecycle Information:

[Amphenol:](#)

[FCE17-A15PN-251](#)