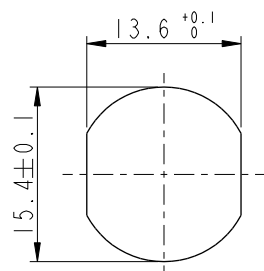
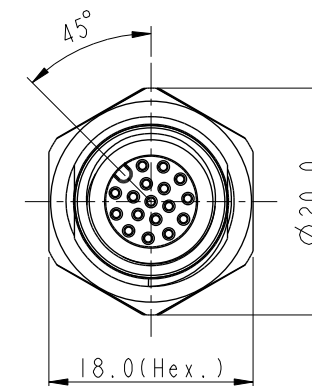
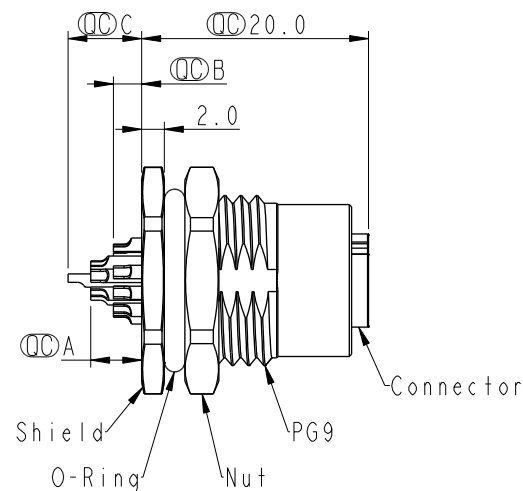
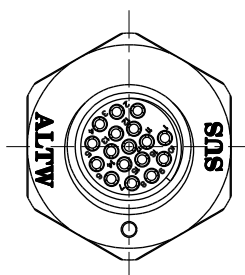


REV.	ECN NO.	DATE	SIGN	DESCRIPTION
A		2021-08-13	Allen Pan	Rev.02 To Rev.A

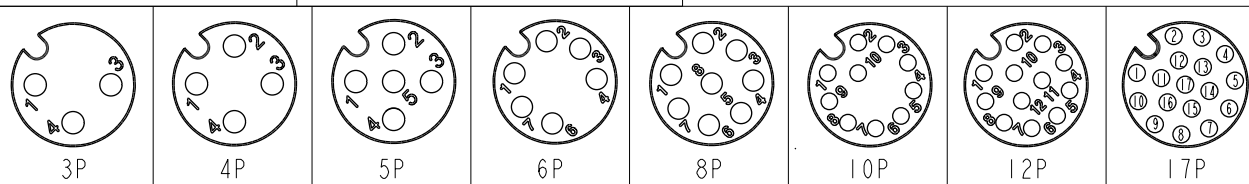


Recommended
Panel Cut-Out

SMI2A-XXPFFS-SF8001
XX: No. Of Pin



SMI2A-03PFFS-SF8001		2.5	
SMI2A-04PFFS-SF8001		2.5	
SMI2A-05PFFS-SF8001		2.5	
SMI2A-06PFFS-SF8001		2.5	
SMI2A-08PFFS-SF8001		2.5	
SMI2A-10PFFS-SF8001	4.5	2.5	
SMI2A-12PFFS-SF8001	4.5	2.5	
SMI2A-17PFFS-SF8001	4.5	2.5	6.5
Item No.	A	B	C
Pin伸出長度			



Pin Assignment Front View

UNIT:mm			TITLE N SEN, M12 A-STAINLESS, SCREW RECEPTACLE, F, F, SOLDER
TOLERANCE .X .XX .XXX ANGLES	±0.25 ±0.1 ±0.05 ±1°	SCALE 3:2 REV. A	SIZE A4 WC-REV. A.1 SHEET 1 OF 1 QC: Inspection item

Amphenol LTW
安費諾亮泰企業股份有限公司

Note:

- * RoHS Compliant
- * (C) Important dimension
- * Waterproof rate: IPX8, unmated 1m/24h
IPX9K, unmated
- * Connector
Housing: Thermoplastic, Black
Pin: Copper alloy, Gold plated
O-Ring: Rubber, Green
- * Shield: Metal
- * Nut: Metal
- * O-Ring: Rubber, Black
- * For panel thickness max: 4.5mm
- * Nut is packed separately in pe bag

ITEM NO.	DRAWN BY Allen Pan	DATE 2021-08-13
DWG NO. SMI2A-XXPFFS-SF8001	CHECKED BY Sam Ho	DATE 2021-08-13
CUSTOMER ALTW	APPROVED BY Fred Lee	DATE 2021-08-13

Mouser Electronics

Authorized Distributor

Click to View Pricing, Inventory, Delivery & Lifecycle Information:

[Amphenol:](#)

[SM12A-05PFFS-SF8001](#) [SM12A-08PFFS-SF8001](#)