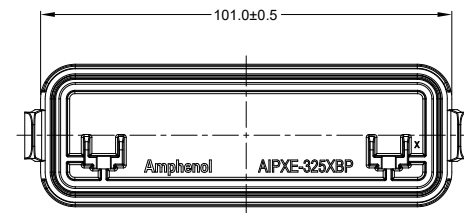
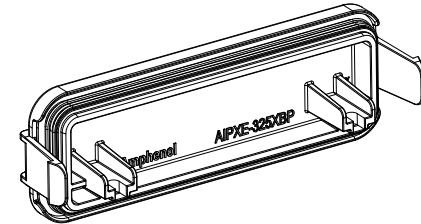


REVISIONS					
REV	ECO	DESCRIPTION	DATE	BY	APPR
A1	-	NEW DRAWING	30AUG19	SULLEN	TOMMY
A2	-	ADD RIBS	05NOV19	SULLEN	TOMMY
A3	-	UPDATED SPACE LIMIT DIMENSION	15JAN20	SULLEN	TOMMY



NOTES: UNLESS OTHERWISE SPECIFIED

1. MATERIAL: THERMOPLASTIC, BLACK

2. SPECIFICATIONS:

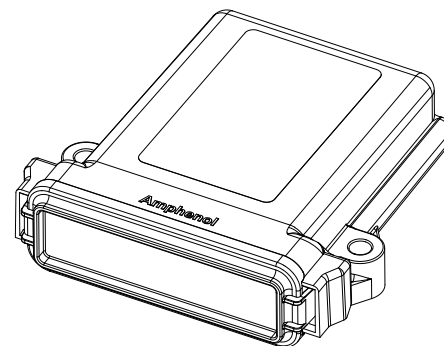
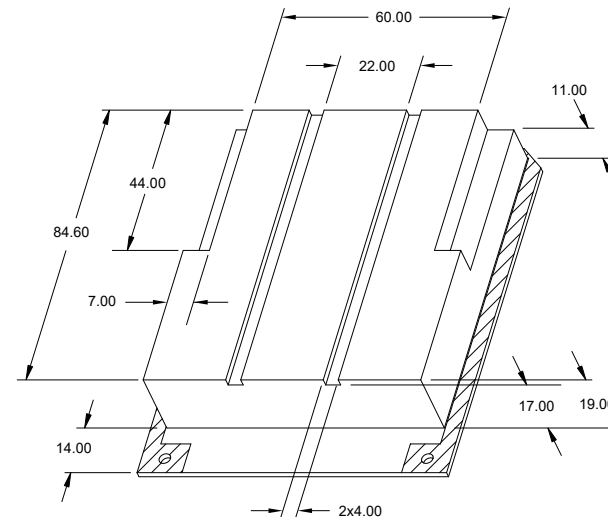
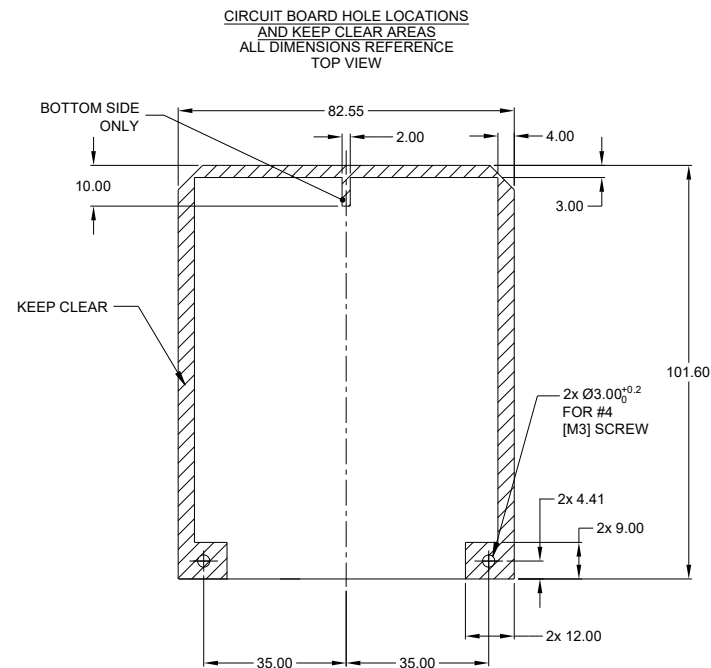
- 2.1 OPERATING TEMPERATURE: -55°C TO +125°C
- 2.2 INSULATION RESISTANCE: 1000 MEGOHMS MIN @ 25°C
- 2.3 MOISTURE RESISTANCE: IP69K (MATED CONDITION)
- 2.4 MATING CYCLE DURABILITY: 100 CYCLES
- 2.5 RoHS COMPLIANT

3. THIS PRODUCT IS USED WITH AIPXE-325X4A-XXXX AND AIPXE-325X4B-XXXX ENCLOSURE (XXXX= ALL MODIFICATIONS)


4. ALL DIMENSIONS ARE FOR REFERENCE USE ONLY

AIPXE-325XBP-01		DESCRIPTION		ITEM
PART NUMBER				
QUANTITY		MATERIALS LIST		
UNLESS OTHERWISE SPECIFIED		SIGNATURES		
1) All dimensions are in metric (mm).		DATE		
2) Tolerances are as follows:		DRAWN: SULEN ZHANG 15JAN20		
1 PL DEC ±0.30		CHECKED: ORION LI 16JAN20		
2 PL DEC ±0.15		ENGINEER:		
3 PL DEC ±0.08		APPROVAL: TOMMY XIE 17JAN20		
3) Note reference =		CUSTOMER:		
MATERIAL SPECIFICATIONS:		THIS DRAWING IS SUPPLIED FOR INFORMATION ONLY. DESIGN FEATURES, SPECIFICATIONS AND PERFORMANCE DATA SHOWN HEREON ARE THE PROPERTY OF THE AMPHENOL CORPORATION. NO RIGHTS OF REPRODUCTION ARE IMPLIED. ALL DIMENSIONS ARE SUBJECT TO NORMAL MANUFACTURING VARIATIONS.		
PROCESS SPECIFICATIONS:		SCALE: NONE		
NEXT ASSY:		SHEET 1 OF 2		
		REVISION A3		

REVISIONS					
REV	ECO	DESCRIPTION	DATE	BY	APPR
A1	-	NEW DRAWING	30AUG19	SULLEN	TOMMY
A2	-	ADD RIBS	05NOV19	SULLEN	TOMMY
A3	-	UPDATED SPACE LIMIT DIMENSION	15JAN20	SULLEN	TOMMY



3D VIEW
AIPXE-325X4A-XXXX AND
AIPXE-325X4B-XXXX ENCLOSURE AND
MOUNTING HARDWARE SHOWN FOR REFERENCE

AIPXE-325XBP-01		DESCRIPTION		ITEM
PART NUMBER				
QUANTITY	MATERIALS LIST			
<div>UNLESS OTHERWISE SPECIFIED</div> <div>1) All dimensions are in metric(mm).</div> <div>2) Tolerances are as follows:</div> <div>1 PL DEC ± 0.30</div> <div>2 PL DEC ± 0.15</div> <div>3 PL DEC ± 0.08</div> <div>Angles $\pm 1^\circ$</div> <div>3) Note reference = </div>		<div>SIGNATURES</div> <div>DATE</div> <div>DRAWN: SULLEN,ZHANG</div> <div>15JAN20</div> <div>CHECKED: ORION,LI</div> <div>16JAN20</div> <div>ENGINEER:</div> <div>APPROVAL: TOMMY,XIE</div> <div>17JAN20</div> <div>CUSTOMER:</div>		<div>Amphenol</div> <div>Sine Systems - www.amphenol-sine.com</div> <div>44724 Morley Drive</div> <div>Clinton Township, MI 48036</div> <div>ARMOR IPX</div> <div>BLANK PLATE</div>
MATERIAL SPECIFICATIONS:		<div>THIS DRAWING IS SUPPLIED FOR INFORMATION ONLY. DESIGN FEATURES, SPECIFICATIONS AND PERFORMANCE DATA SHOWN HEREON ARE THE PROPERTY OF THE AMPHENOL CORPORATION. NO RIGHTS OF REPRODUCTION ARE IMPLIED. ALL DIMENSIONS ARE SUBJECT TO NORMAL MANUFACTURING VARIATIONS.</div>		
PROCESS SPECIFICATIONS:				
NEXT ASSY:				
		<div>SIZE</div> <div>B</div>	<div>TYPE</div> <div>C-</div>	<div>DWG NO.</div> <div>AIPXE-325XBP-01</div>
		<div>SCALE</div> <div>NONE</div>	<div>REVISION</div> <div>A3</div>	
		<div>SHEET</div> <div>2</div> <div>OF</div> <div>2</div>		

Mouser Electronics

Authorized Distributor

Click to View Pricing, Inventory, Delivery & Lifecycle Information:

[Amphenol:](#)

[AIPXE-325XBP-01](#)