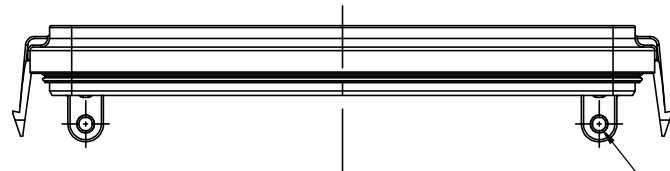
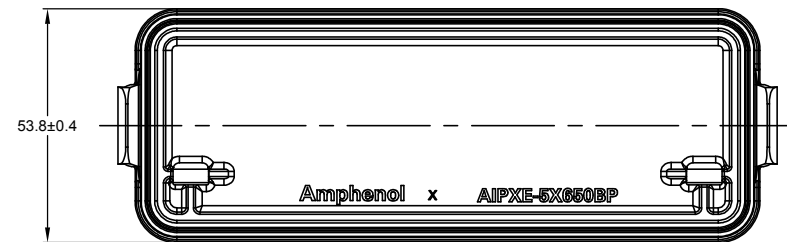
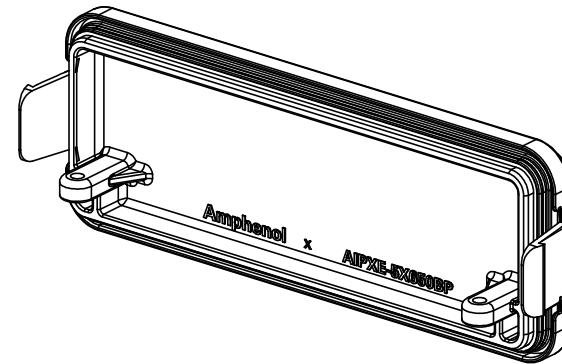
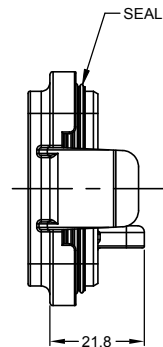
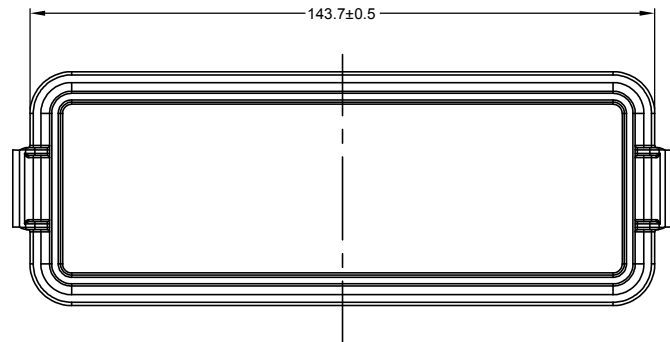
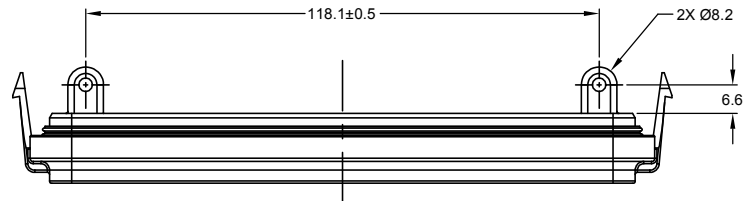


REVISIONS					
REV	ECO	DESCRIPTION	DATE	BY	APPR
A1	-	NEW RELEASE	28APR2020	ZENIN	TOMMY



NOTES: UNLESS OTHERWISE SPECIFIED

1. MATERIAL: THERMOPLASTIC, BLACK

2. MODIFICATIONS: BLANK PLATE

3. SPECIFICATIONS:

- 3.1 OPERATING TEMPERATURE: -55°C TO +125°C
- 3.2 INSULATION RESISTANCE: 1000 MEGOHMS MIN @ 25°C
- 3.3 MOISTURE RESISTANCE: IP67 (MATED CONDITION)
- 3.4 RoHS COMPLIANT

4. THIS PRODUCT IS USED WITH AIPXE-5X650A-XXXX AND AIPXE-5X650B-XXXX ENCLOSURE (XXXX= ALL MODIFICATIONS)

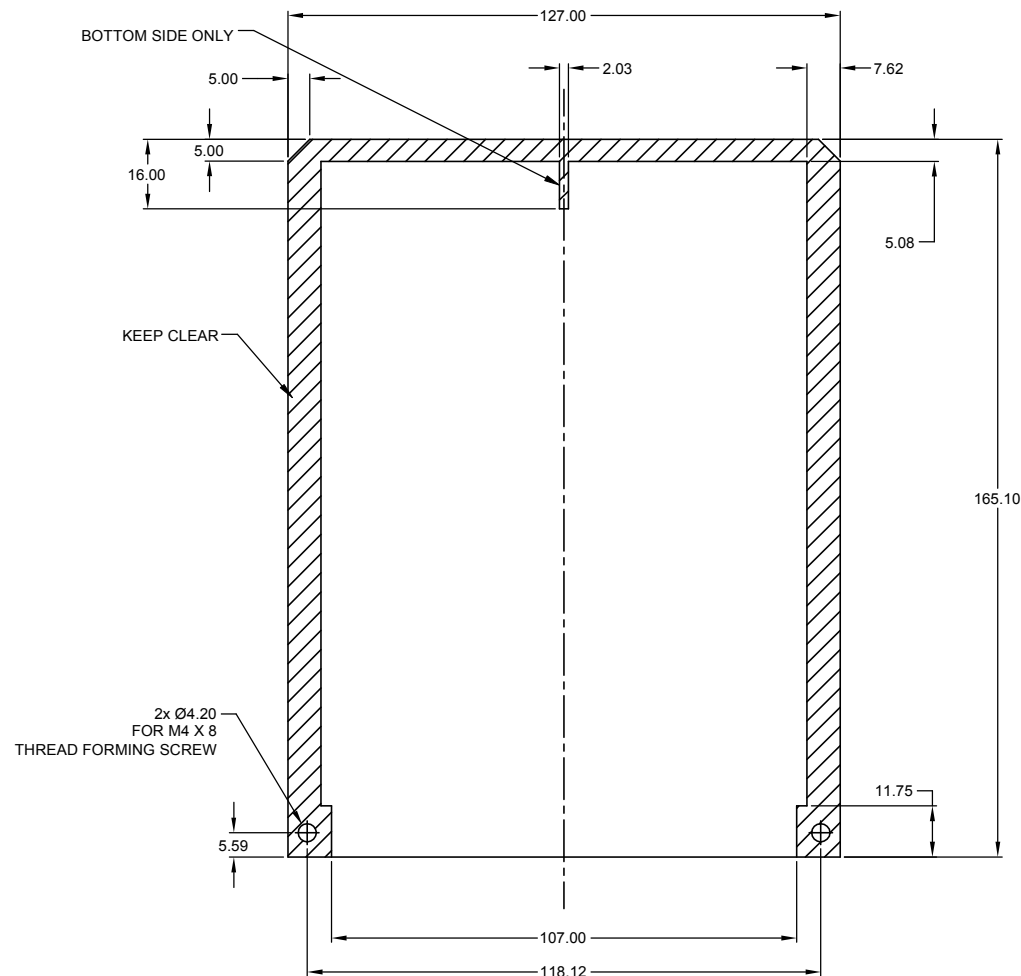
5. ALL DIMENSIONS ARE FOR REFERENCE USE ONLY

2X Ø3.18±0.12 HOLE
RECOMMENDED SCREW [M4.0X8.0]
THREAD-FORMING SCREW,
TORQUE:10-20IN-LB [1.13-2.25N-m]

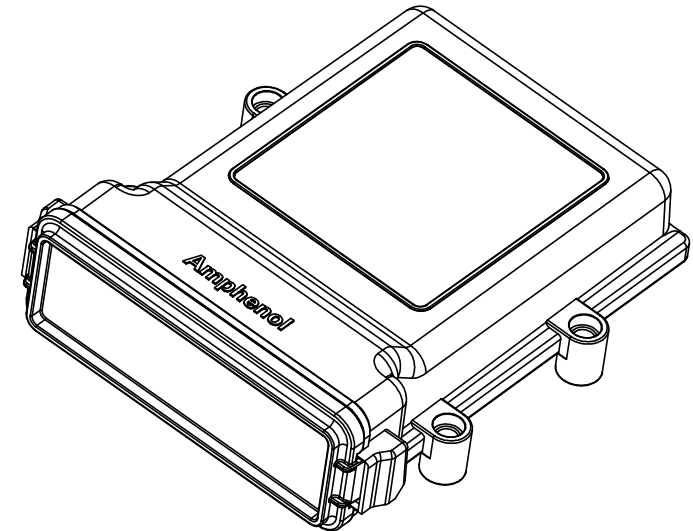
AIPXE-5X650BP-01		DESCRIPTION		ITEM	
PART NUMBER		DESCRIPTION		ITEM	
QUANTITY		MATERIALS LIST		ITEM	
UNLESS OTHERWISE SPECIFIED		SIGNATURES		DATE	
1) All dimensions are in metric (mm).		DRAWN: ZENIN, DENG		28/APR/20	
2) Tolerances are as follows:		CHECKED: ORION, LI		28/APR/20	
1 PL DEC ±0.30		ENGINEER:			
2 PL DEC ±0.15		APPROVAL: TOMMY, XIE		30/APR/20	
3 PL DEC ±0.08		CUSTOMER:			
3) Note reference =					
MATERIAL SPECIFICATIONS:		THIS DRAWING IS SUPPLIED FOR INFORMATION ONLY. DESIGN FEATURES, SPECIFICATIONS AND PERFORMANCE DATA SHOWN HEREON ARE THE PROPERTY OF THE AMPHENOL CORPORATION. NO RIGHTS OF REPRODUCTION ARE IMPLIED. ALL DIMENSIONS ARE SUBJECT TO NORMAL MANUFACTURING VARIATIONS.			
PROCESS SPECIFICATIONS:					
NEXT ASSY:					
		SIZE		TYPE	
		B C-		DWG NO:	
		SCALE		NONE	
				SHEET 1 OF 2	

TITLE: ARMOR IPX, BLANK PLATE FOR AT
DWG NO: AIPXE-5X650BP-01
REV: A1
SH: 1
OF: 2


REVISIONS					
REV	ECO	DESCRIPTION	DATE	BY	APPR
A1	-	NEW RELEASE	28APR2020	ZENIN	TOMMY



CIRCUIT BOARD HOLE LOCATIONS AND KEEP CLEAR AREAS
 BOARD THICKNESS IN KEEP CLEAR ARE TO BE 2.36±0.1
 MAX. COMPONENT HEIGHT UPSIDE BOARD 25.20 mm.
 MAX. COMPONENT HEIGHT UNDER BOARD 4.00 mm.
 ALL DIMENSIONS REFERENCE
 TOP VIEW



3D VIEW
 AIPXE-5X650A-XXXX AND
 AIPXE-5X650B-XXXX ENCLOSURE AND
 MOUNTING HARDWARE SHOWN FOR REFERENCE

AIPXE-5X650BP-01		DESCRIPTION		ITEM	
PART NUMBER					
QUANTITY	MATERIALS LIST				
UNLESS OTHERWISE SPECIFIED		SIGNATURES		DATE	
1) All dimensions are in metric (mm).		DRAWN:		ZENIN DENG	28/APR/20
2) Tolerances are as follows:		CHECKED:		ORION LI	28/APR/20
1 PL DEC ±0.30		ENGINEER:			
2 PL DEC ±0.15		APPROVAL:		TOMMY XIE	30/APR/20
3 PL DEC ±0.08					
3) Note reference = 					
MATERIAL SPECIFICATIONS:		CUSTOMER:			
PROCESS SPECIFICATIONS:		THIS DRAWING IS SUPPLIED FOR INFORMATION ONLY. DESIGN FEATURES, SPECIFICATIONS AND PERFORMANCE DATA SHOWN HEREON ARE THE PROPERTY OF THE AMPHENOL CORPORATION. NO RIGHTS OF REPRODUCTION ARE IMPLIED. ALL DIMENSIONS ARE SUBJECT TO NORMAL MANUFACTURING VARIATIONS.			
NEXT ASSY:		SCALE: NONE			
		SIZE TYPE		DWG NO:	REVISION
		B C-		AIPXE-5X650BP-01	A1
				SHEET 2	OF 2

Mouser Electronics

Authorized Distributor

Click to View Pricing, Inventory, Delivery & Lifecycle Information:

[Amphenol:](#)

[AIPXE-5X650BP-01](#)