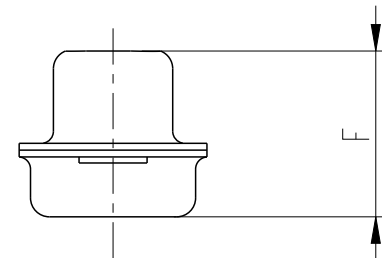
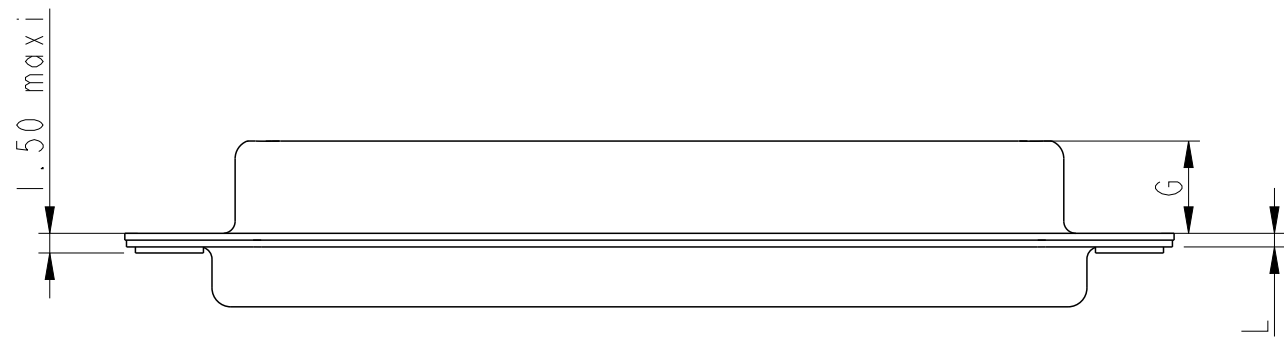
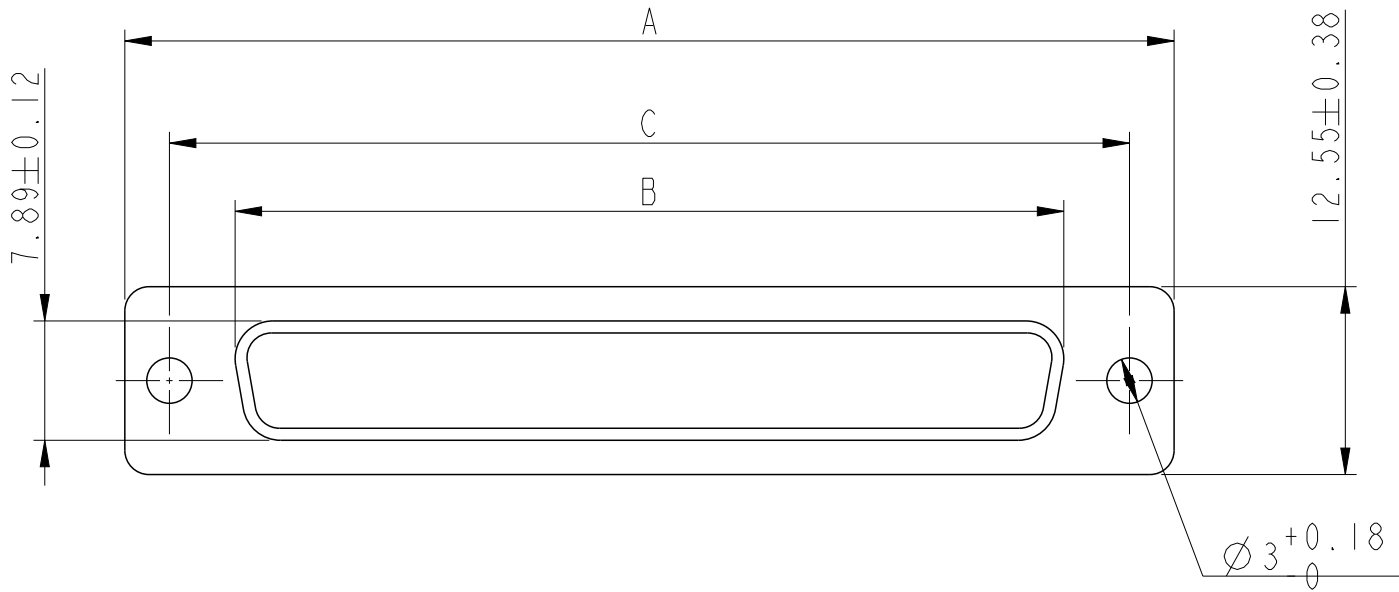


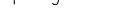





Copyright FCI.



Shell size	A ^{+0.76} ₀	B ^{+0.25} ₀	C±0.12	F±0.12	G ^{+0.25} ₀	L ^{+0.22} ₀	Part Number
E	30.43	16.21	24.99	10.96	6.05	0.80	86553148TLF
A	38.76	24.54	33.32	10.96	6.05	0.80	86553149TLF
B	52.65	38.25	47.04	10.96	6.05	0.80	86553150TLF
C	68.94	54.71	63.50	10.96	6.05	0.80	86553151TLF

- NOTES
- RoHS INFO : The product meets the european directives and others countries regulations as described on the GS-47-0004
 - The product isn't intended to be exposed to a manufacturing solder process
 - Plating : Sn pure bright over copper
 - Packaging spec : see GS-14-920

spec ref		-		dr		A Parrenin	2013/04/04			size		A3	scale		2:1			
tolerance std	TOLERANCES UNLESS OTHERWISE SPECIFIED			eng		A Parrenin	2013/05/16			ecn no		ELX-B-14776-1						
				chr		Laurent Mulin	2013/05/16			rel level				Released				
				appr		Gert Dreesbeke	2013/05/16											
								product family				D-Sub						
surface			linear	0.X	±0.3		title				SOCKET METAL CAPS		dwg no		C01-8655-1657		rev	D
				0.XX	±0.10													
				0.XXX	±0.05													
ISO 1302		angular	0°	±2°	www.fci.com		cat. no.		-	Product - Customer Drw				sheet 1 of 1				

Mouser Electronics

Authorized Distributor

Click to View Pricing, Inventory, Delivery & Lifecycle Information:

[Amphenol:](#)

[86553148TLF](#) [86553149TLF](#) [86553150TLF](#) [86553151TLF](#)