

PRODUCT NUMBER

10142802-0XXLF

## NOTES:

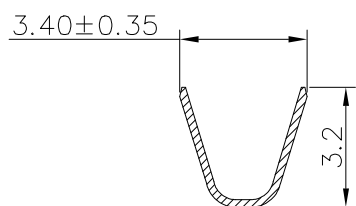
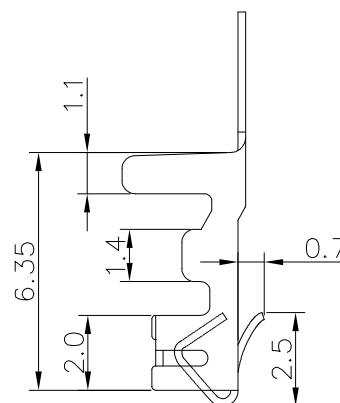
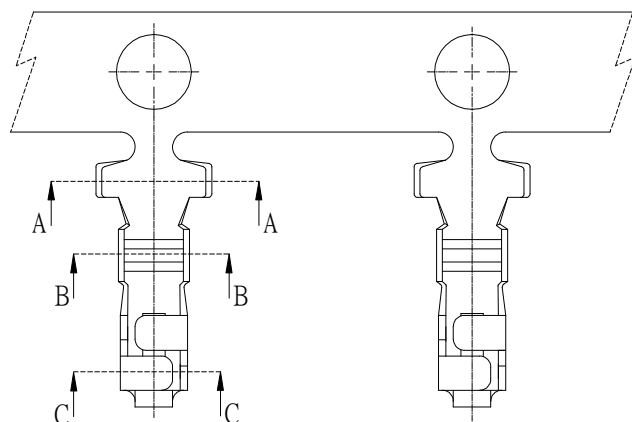
1. MATERIAL: 0.20mm THICK COPPER ALLOY
2. FINISH:  
15U" NICKEL UNDER PLATING  
60U" TIN ON SOLDER TAIL
3. APPLICABLE WIRES: AWG#20-#28
4. INSULATION O.D.: MAX 1.40mm
5. RoHS COMPLIANT
6. THIS TERMINAL IS USED WITH FCI HSG:10142801
7. PRODUCT SPEC: GS-12-1407.
8. PACKING SPEC: GS-14-2573.
9. PART NUMBER SCHEME:  
10142802- 0 X X LF

## FINISH:

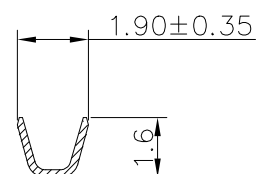
- 1: PRE-MATTE TIN PLATED
- 2: POST-MATTE TIN PLATED
- 3: PRE-BRIGHT TIN PLATED
- 4: POST-BRIGHT TIN PLATED
- 5: GOLD PLATED

## Material:

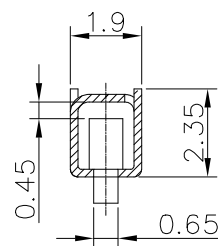
- 1: BRASS
- 2: PHOSPHOR BRONZE



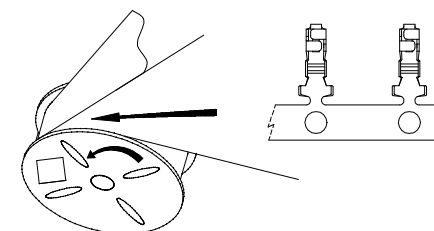
SEC A-A




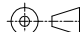


SEC B-B



SEC C-C



RAW INTO DIRECTION

mat'l. code				surface 		tolerance		projection 		product family WTB								
litr		ecn no		dr		date		tolerances unless otherwise specified				title						
A				TONY		2017-02-16		angles			.X±0.30				2.5mm Pitch Crimp Terminal			
								.XX±0.20										
						0°±5°		.XXX±0.10										
								scale N.T.S.						dwg no sheet 1 of 1 size 10142802 A4				
														type Product Customer Drawing				
sheet index		revision sheet		A 1														

# Mouser Electronics

Authorized Distributor

Click to View Pricing, Inventory, Delivery & Lifecycle Information:

[FCI / Amphenol:](#)

[10142802-022LF](#)