
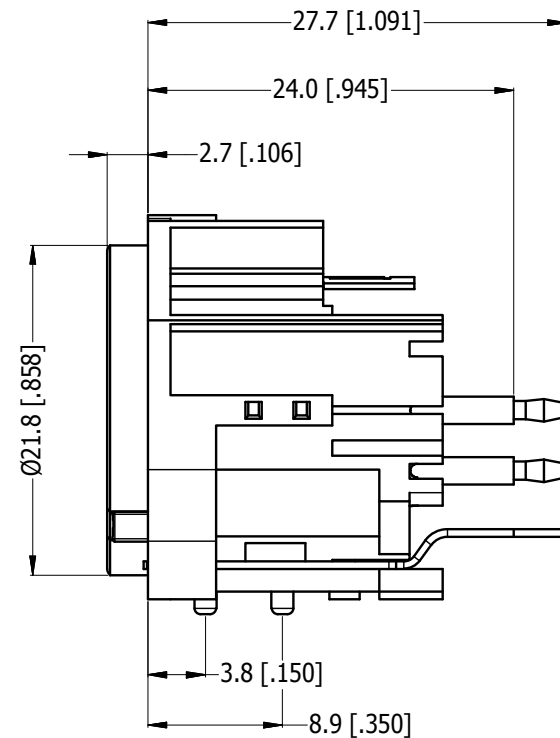
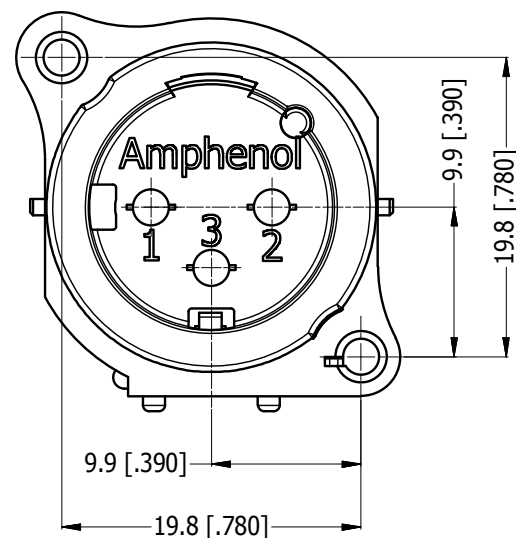
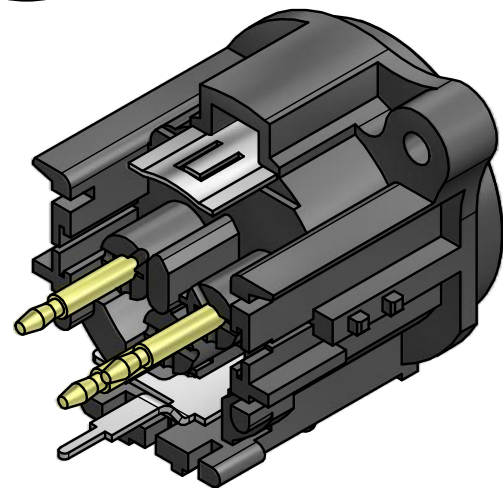
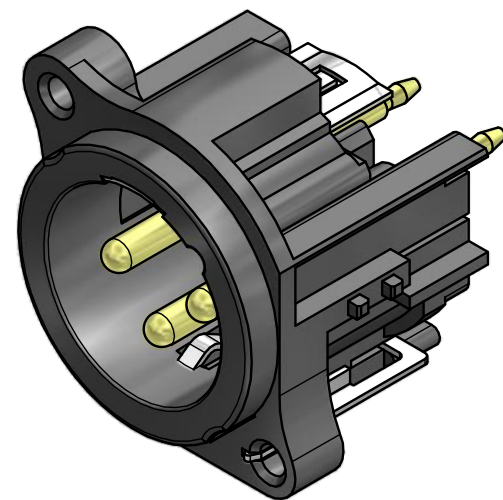
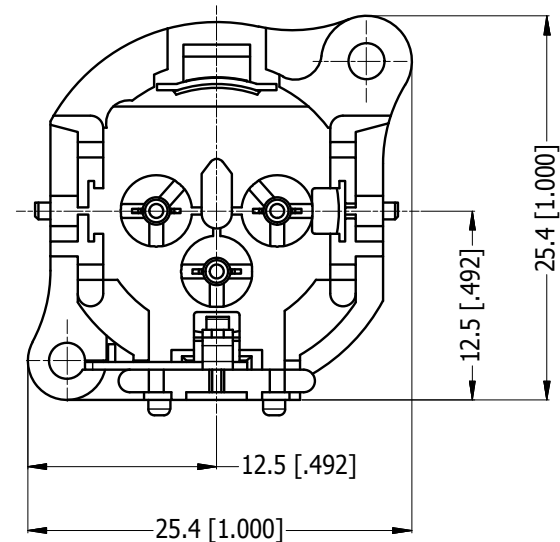


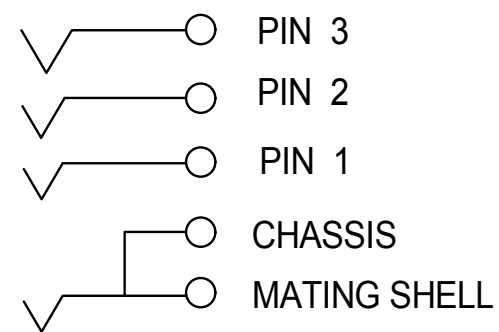
LEGEND  = KEY PRODUCT CHARACTERISTICS



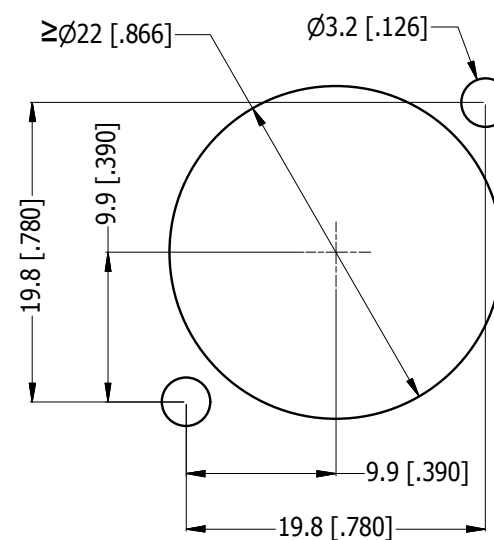
REVISION HISTORY				
REV	DESCRIPTION	DATE	BY	CHG/No
0	FIRST ISSUE	08/10/14	MH	---
1	UPDATED DIMENSION TO ACTUAL PART	14/08/15	MH	----



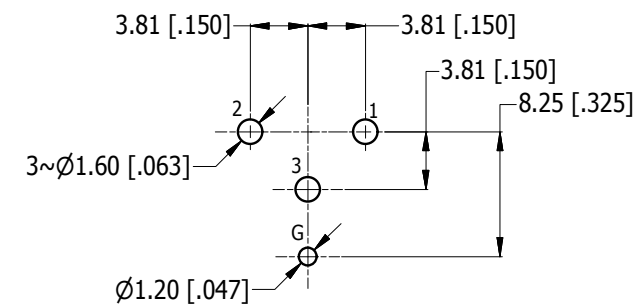
ISO VIEWS



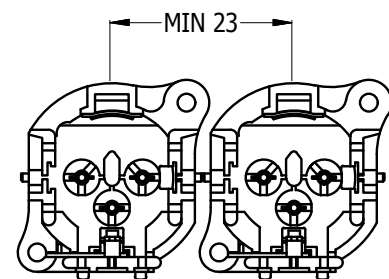
SCHEMATIC CHART



PANEL CUT OUT
REAR VIEW



PCB-LAYOUT
COMPONENT SIDE
TOLERANCE: ± 0.05mm [0.002"]



MIN MOUNTING PITCH
SCALE 1:1

UNLESS OTHERWISE SPECIFIED TOLERANCE TO BE		THIS DOCUMENT IS THE PROPERTY OF AMPHENOL AUSTRALIA PTY. LTD. . NO PART THEREOF MAY BE REPRODUCED AND USED WITHOUT THE PRIOR WRITTEN CONSENT OF THE OWNER				Amphenol Amphenol Australia Pty.Ltd, 22 Industry Blvd, Carrum Downs, VIC 3201	
LINEAR	ANGULAR	MATERIAL: REFER TO COMPONENT	DRN:	MH	DATE:	08/10/14	TITLE: AC3MAV2-AU-PRE VERTICAL MALE CUSTOMER DRAWING
X ± 0.5	X' ± 1		CKD:	M.H	DATE:	14/08/15	
X.X ± 0.1	X.X' ± 30'		APP'D:	P.M	DATE:	14/08/15	
X.XX ± 0.05	X.XX" ± 15'	FINISH: REFER TO COMPONENT	SCALE:	2:1	SIZE:	A3	PART No: AC3MAV2-AU-PRE
BREAK ALL SHARP EDGES AND REMOVE ALL BURRS		DO NOT SCALE		DIMENSIONS IN MILLIMETRES		CAD FILE 55011051000221	
						DRAWING NO.	SHEET
						55011051-000-2	2 / 2

Mouser Electronics

Authorized Distributor

Click to View Pricing, Inventory, Delivery & Lifecycle Information:

[Amphenol:](#)

[AC3MAV2-AU-PRE](#)