

THIS DOCUMENT IS SUBJECT TO CHANGE WITHOUT NOTICE. IT IS CONFIDENTIAL AND A PROPERTY OF Amphenol LTW. DISCLOSURE TO THIRD PARTY HAS TO BE AUTHORIZED BY Amphenol LTW.

REV.	ECN NO.	DATE	SIGN	DESCRIPTION
B	C190346	2019/03/05	Vicky	Change Note

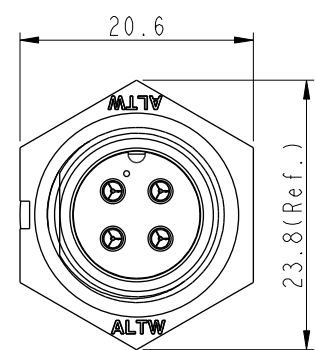
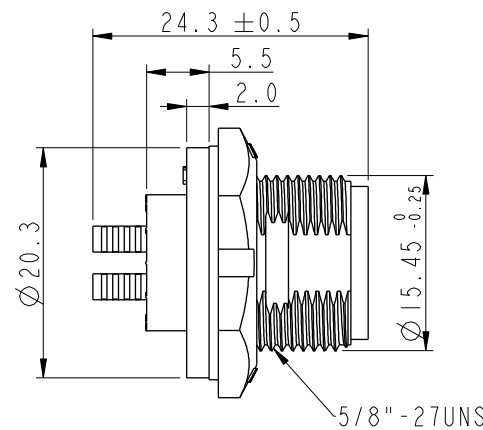
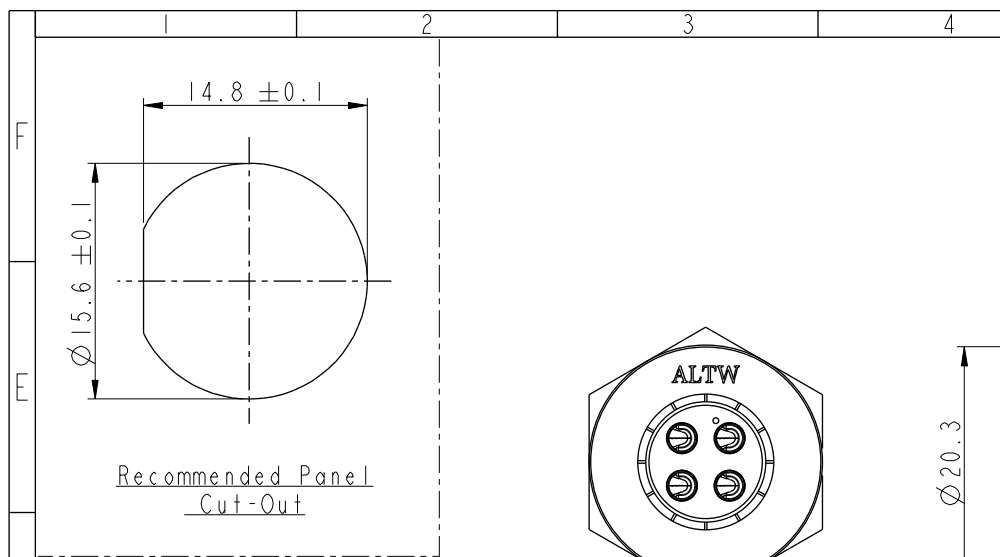
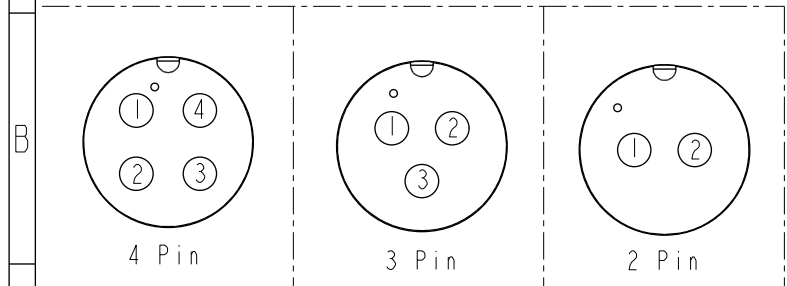
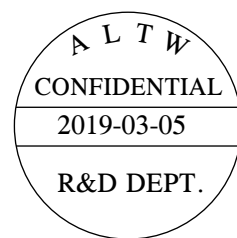
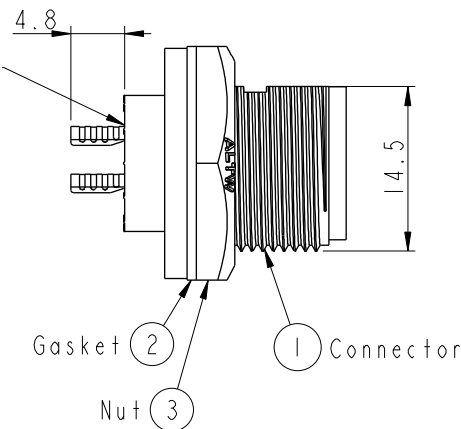


ABB-XXPMS-SC7001  
02: 2Pin  
04: 4Pin

With Liquid Glue



Pin Assignments Front View

- Note:**
- \* **QC** Important Dimension To Check.
  - \* Waterproof Rate: IP67, Unmated.
  - \* Housing: Thermoplastic, Black.
  - \* Pin: Copper Alloy, Gold Plated.
  - \* Gasket: Rubber, Gray.
  - \* Nut: Thermoplastic, Black.
  - \* Use with waterproof cap or dust cap  
Maximum Panel Thickness: 3.3mm
  - \* Use without waterproof cap or dust cap  
Maximum Panel Thickness: 4.5mm
  - \* Gasket and Nut are packed separately in PE bags. (Gasket/Nut 不組裝, 散裝出貨)

UNIT: mm

TOLERANCE

.X ±0.25

.XX ±0.1

.XXX ±0.05

ANGLES ±1°

SCALE 2:1

SIZE A4

SHEET 1 OF 1

REV. B

WC-REV. A.1

QC: Inspection item

TITLE

STANDARD

PANEL SCREW M CONN M PIN

Amphenol LTW

安費諾亮泰企業股份有限公司

ITEM NO

DWG NO

CUSTOMER

DRAWN BY

CHECKED BY

APPROVED BY

DATE

DATE

DATE

1

2

3

4

5

6

7

8

W10814-03-0001A

**Amphenol LTW**  
安費諾亮泰企業股份有限公司

# Mouser Electronics

Authorized Distributor

Click to View Pricing, Inventory, Delivery & Lifecycle Information:

[Amphenol:](#)

[ABB-03PMMS-SC7001](#) [ABB-04PMMS-SC7001](#)