

THIS DOCUMENT IS SUBJECT TO CHANGE WITHOUT NOTICE. IT IS CONFIDENTIAL AND A PROPERTY OF Amphenol LTW. DISCLOSURE TO THIRD PARTY HAS TO BE AUTHORIZED BY Amphenol LTW.

REV.	ECN NO.	DATE	SIGN	DESCRIPTION
B	C190346	2019/03/05	Vicky	Change Note

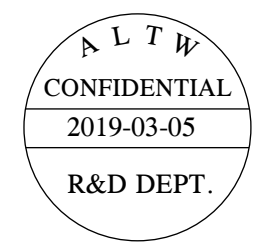
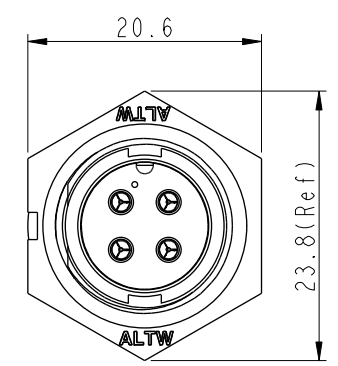
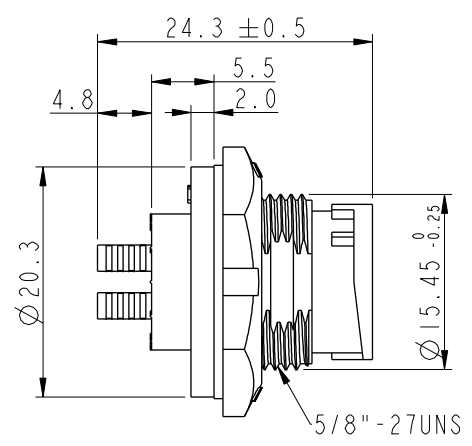
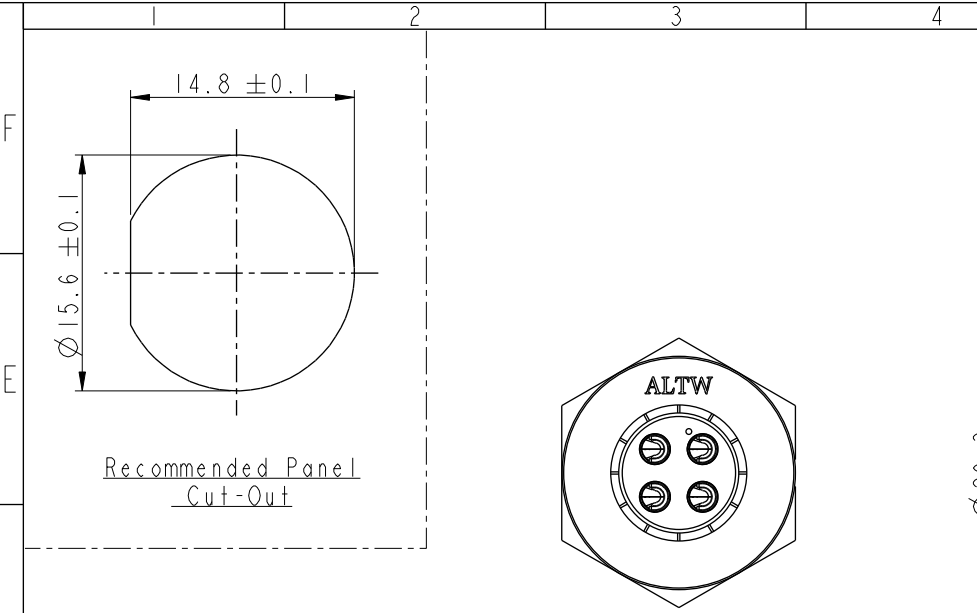
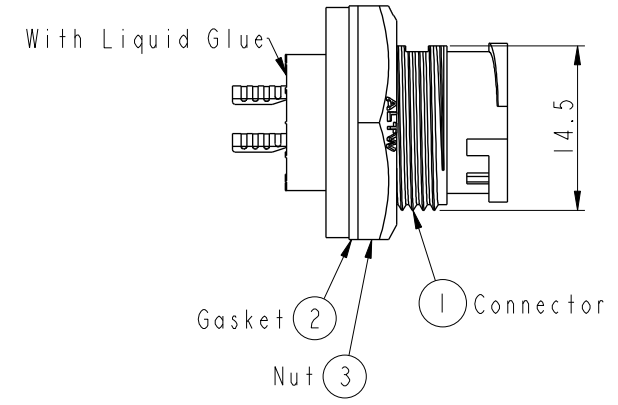
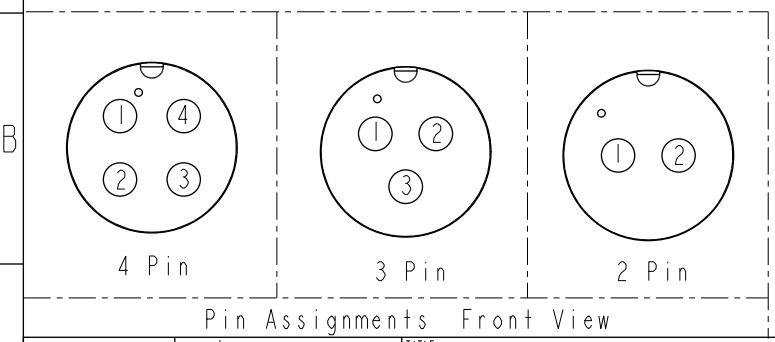


ABB-XXPMMS-LC7001  
02: 2Pin  
04: 4Pin



- Note:
- \* Important Dimension To Check.
  - \* Waterproof Rate: IP67, Unmated.
  - \* Housing: Thermoplastic, Black.
  - \* Pin: Copper Alloy, Gold Plated.
  - \* Nut: Thermoplastic, Black.
  - \* Gasket: Rubber, Gray.
  - \* Use with waterproof cap or dust cap  
Maximum Panel Thickness: 2.8mm
  - \* Use without waterproof cap or dust cap  
Maximum Panel Thickness: 4.0mm
  - \* Gasket and Nut are packed separately in PE bags. (Gasket/Nut不組裝，散裝出貨)



UNIT: mm		TOLERANCE		TITLE		ITEM NO		DRAWN BY		DATE	
.X ±0.25		.XX ±0.1		STANDARD		DWG NO		Vicky		2019-03-05	
.XXX ±0.05		ANGLES ±1°		PANEL LOCK M CONN MPIN		ABB-XXPMMS-LC7001		CHECKED BY		DATE	
REV. B		WC-REV. A.1		SCALE 3:2		CUSTOMER		APPROVED BY		DATE	
				SIZE A4		ALTW		Max		2019-03-05	
				SHEET 1 OF 1							
				QC: Inspection item							

Amphenol LTW  
安費諾亮泰企業股份有限公司

# Mouser Electronics

Authorized Distributor

Click to View Pricing, Inventory, Delivery & Lifecycle Information:

[Amphenol:](#)

[ABB-04PMMS-LC7001](#)