

PRODUCT NUMBER  
93696-YXXLF

RoHS COMPATIBLE, SEE NOTE 6

NUMBER OF POSITIONS PER ROW: 03 TO 50.

PLATING CODE

3= 0.76µm GOLD ON CONTACT AREA.

2µm MIN MATTE TIN ON TAIL.

4= 2µm MIN MATTE TIN FULL PLATED

1.27µm Ni MIN UNDERPLATING

NOTES:

- 1 - HOUSING MAT'L: THERMOPLASTIC GLASS FILLED  
FLAME RETARDANT PER UL 94 V-0 COLOR: GREY.
- 2 - TERMINAL MATERIAL: PHOSPHOR BRONZE.
- 3 - 3 UP TO 50 POSITIONS PRODUCT PACKED IN TUBE.
- 4 - TO DETERMINE DIMENSIONS:  
N = NUMBER OF POSITIONS PER ROW  
EXAMPLE: 8 POS:  $((N+2) \times 2.54) - 0.08 = 25.32$  mm.
- 5 - Ø2.65 MINI FOR ASSEMBLY WITHOUT INSERTION EFFORT.
- 6 - RoHS COMPATIBLE PRODUCT SPECIFICATIONS

a - PLATING:

- "LF" MEANS THE PRODUCT IS LEAD-FREE,  
2µm MINIMUM MATTE TIN OVER 1.27µm  
MINIMUM NICKEL UNDERPLATE.

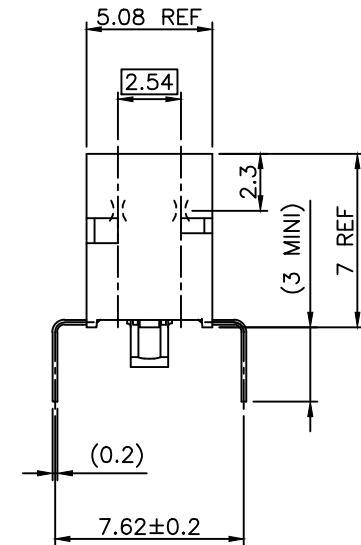
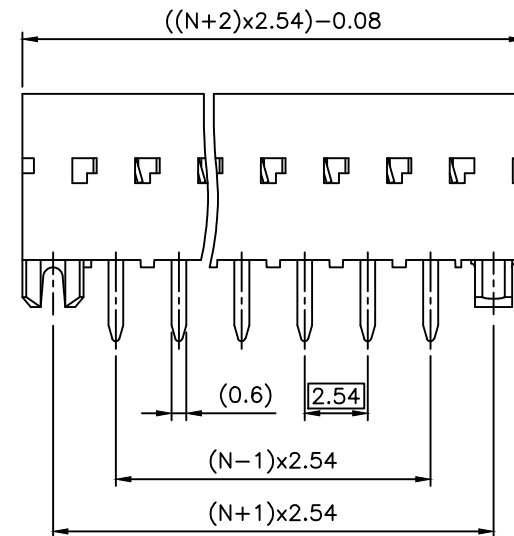
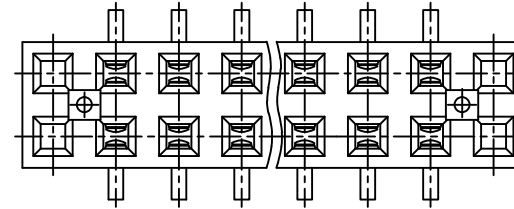
b - MANUFACTURING PROCESS COMPATIBILITY

- THE HOUSING WILL WITHSTAND EXPOSURE TO  
260°C ±5°C SOLDER BATH TEMPERATURE FOR  
5 SECONDS IN A WAVE SOLDER APPLICATION  
WITH A 1.6mm MIN THICK CIRCUIT BOARD.

c - LABELING:

- MEETS PACKAGING SPECS AS PER GS-14-920

d - LEGAL STATEMENT: SEE GS-47-0004



mat'l. code SEE NOTES				surface ISO 1302	tolerance ISO 406 ISO 1101	projection mm	product family DUBOX			
ltr	ecn no	dr	date	tolerances unless otherwise specified		mm	title BtB RECEPT. VERT DR TMT			
L	F06-0204	DLE	06.06.28	angles	linear					
M	F06-0323	DLE	06.11.21	±2°		scale 5:1	dwg no 93696			
N	B-19124	LMU	14.10.21							
				dr	P.NIZZI	95.09.20	sheet 1 of 2 size A3			
H	F10116	GCO	01.01.23	enrg	JM.PHAMVAN	95.09.20				
J	F04-0347	DLE	04.11.15	chr	P.NIZZI	95.09.20	type CUSTOMER Drawing			
K	F06-0137	DLE	06.02.27	appd	JM.P	95.09.20				
sheet	revision	N	B							
index	sheet	1	2							

A

A

B

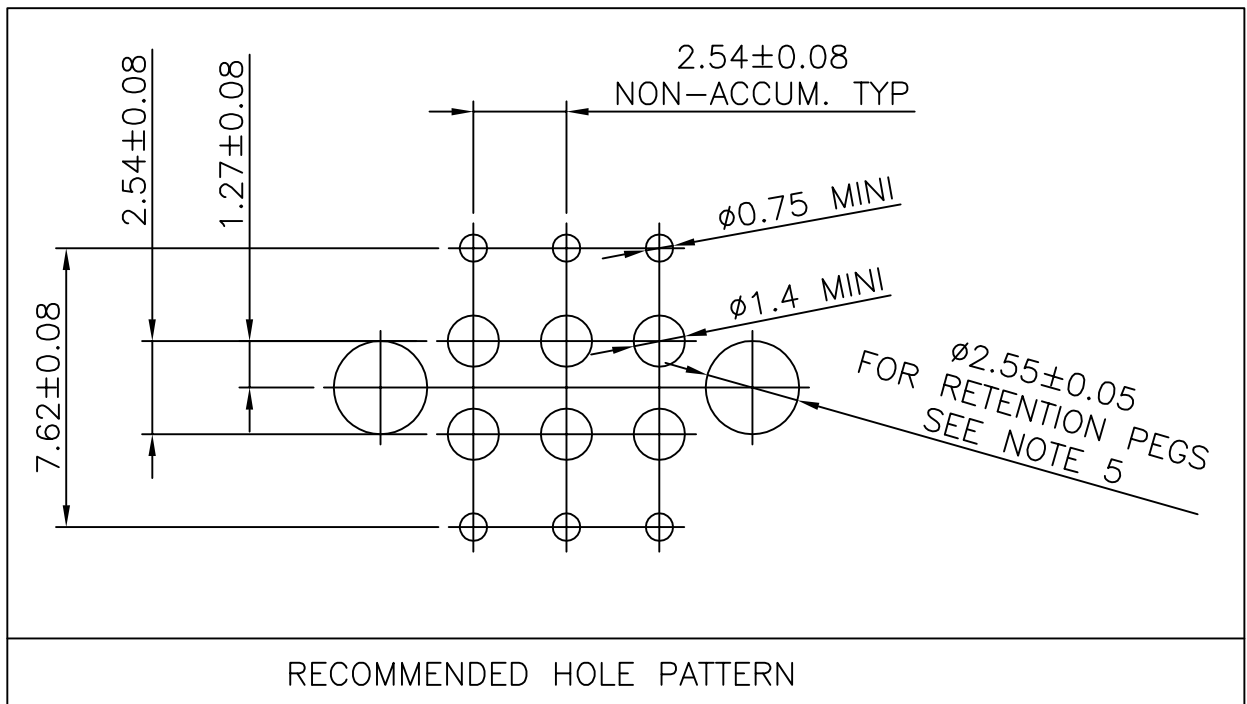
B

C

C

D

D



mat'l. code SEE NOTES				surface ISO 1302 ✓	tolerance ISO 406 ISO 1101	projection 	product family DUBOX									
ltr	ecn no	dr	date	tolerances unless otherwise specified			title BtB RECEPT. VERT DR TMT									
A	F04-0347	DLE	04.11.15	angles	linear											
B	F06-0204	DLE	06.06.28	±2'		scale 5:1	dwg no 93696 sheet 2 of - size A4 type CUSTOMER Drawing									
				dr	D LEGRAND	04.11.15										
				engr	P NIZZI	04.11.15										
				chr	D LEGRAND	04.11.15										
				appd	P NZ	04.11.15										
sheet index	revision sheet															

# Mouser Electronics

Authorized Distributor

Click to View Pricing, Inventory, Delivery & Lifecycle Information:

[Amphenol:](#)

[93696-720LF](#) [93696-730LF](#) [93696-735LF](#)