

# PRODUCT NUMBER

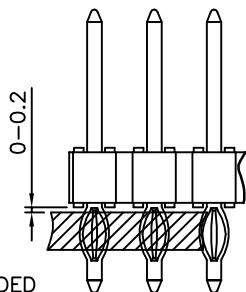
93690-YXX-XXLF

PLATING, SEE TABLE

LEAD FREE  
SEE NOTE 6 & 7

TOTAL NB OF POS  
04 TO 72

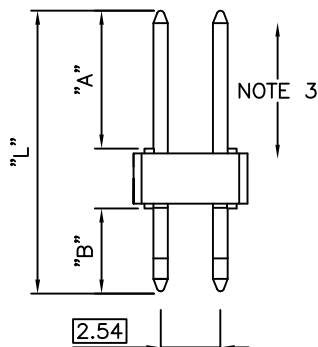
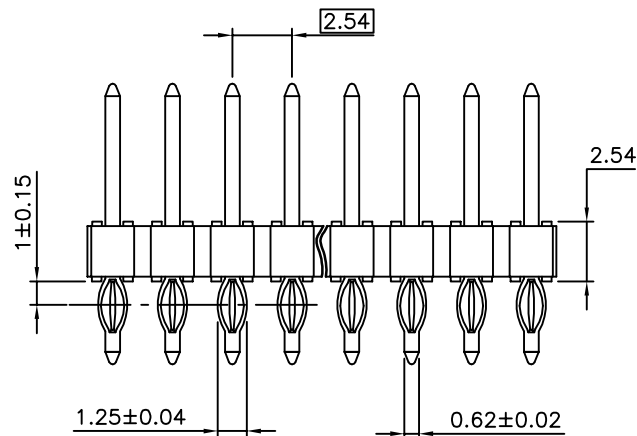
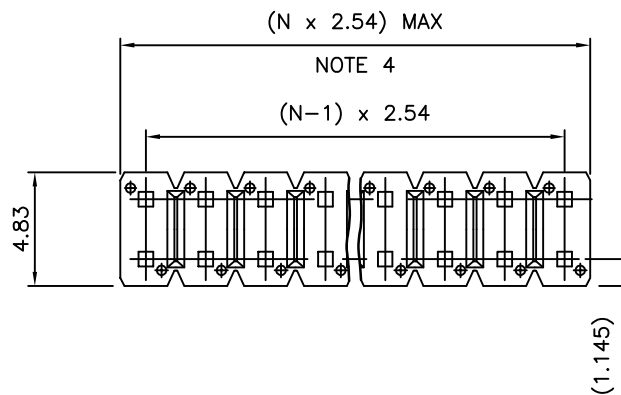
PIN STYLE	DIM "A" REF	DIM "B" ±0.3	DIM "L" ±0.15
01	7.50	4.50	14.78
02	10.14	4.50	17.40
03	5.68	4.50	12.83
04	14.80	4.75	22.15
05	8.30	4.50	15.44
06	6.80	3.60	12.90
07	6.70	3.40	12.62
08	5.20	3.40	11.10
09	8.30	3.60	14.40
10	9.20	3.35	15.09



RECOMMENDED  
POSITION ON THE PCB

## NOTES:

- HOUSING MAT'L : HIGH TEMPERATURE THERMOPLASTIC. UL94V-0 COLOR: BLACK
- PIN MATERIAL : COPPER ALLOY
- 9N MIN RETENTION IN EITHER DIRECTION
- TO DETERMINE DIMENSIONS :  
N = NUMBER OF POSITIONS PER ROW  
EXAMPLE : 8 POS PER ROW,  $N \times 2.54 = 20.32\text{mm}$
- PACKAGING POLYBAGS OR BLIBOX
- LEAD FREE CONNECTOR
- "LF" MEANS THAT THE PRODUCT IS RoHs COMPLIANT THEN MEETS EUROPEAN UNION DIRECTIVES AND OTHER COUNTRY REGULATION AS DESCRIBED IN GS-47-0004



DRILLED HOLE  $\phi 1.15 \pm 0.025$   
Cu 25 $\mu\text{m}$ -65 $\mu\text{m}$   
Sn 8 $\mu\text{m}$ -18 $\mu\text{m}$   
FINISHED PLATED HOLE  $\phi 1^{+0.1}_{-0.05}$

93690-7XX-XXLF	GOLD FLASH OVER 1.27 $\mu\text{m}$ Ni MIN	1.0 $\mu\text{m}$ TIN OVER 1.27 $\mu\text{m}$ Ni MIN
93690-5XX-XXLF	0.25 $\mu\text{m}$ GOLD/GXT OVER 1.27 $\mu\text{m}$ Ni MIN	1.0 $\mu\text{m}$ TIN OVER 1.27 $\mu\text{m}$ Ni MIN
93690-4XX-XXLF	3.05 $\mu\text{m}$ TIN OVER 1.27 $\mu\text{m}$ Ni MIN	
93690-1XX-XXLF	0.76 $\mu\text{m}$ GOLD/GXT OVER 1.27 $\mu\text{m}$ Ni MIN	1.0 $\mu\text{m}$ TIN OVER 1.27 $\mu\text{m}$ Ni MIN
PLATING	CONTACT AREA	PRESS FIT TAIL AREA

mat'l. code SEE NOTE	surface ISO 1302	tolerance ISO 406 ISO 1101	projection mm	product family BSTIK
ltr ecn no dr date	tolerances unless otherwise specified			title
R B-18988 LMU 14.10.06	angles	.X ±0.30		HDR PRESS FIT
S F-22590 AMA 15.11.23	linear	.XX ±0.15		DOUBLE ROW
		.XXX ±0.05	scale 5:1	
L F09-0043 JCO 09.05.07	dr MULIN.L	99.06.30		dwg no
M F10-0229 LMU 10.10.04	engr COMPAGNON J	99.06.30		sheet 1 of 1
N B16804 JCO 14.01.21	chr NIZZI.P	99.06.30		size
P B-17404 JCO 14.04.07	appd JM.C	96.05.06		A3
sheet index	revision sheet			type CUSTOMER Drawing

# Mouser Electronics

Authorized Distributor

Click to View Pricing, Inventory, Delivery & Lifecycle Information:

[FCI / Amphenol:](#)

[93690-404-12LF](#)