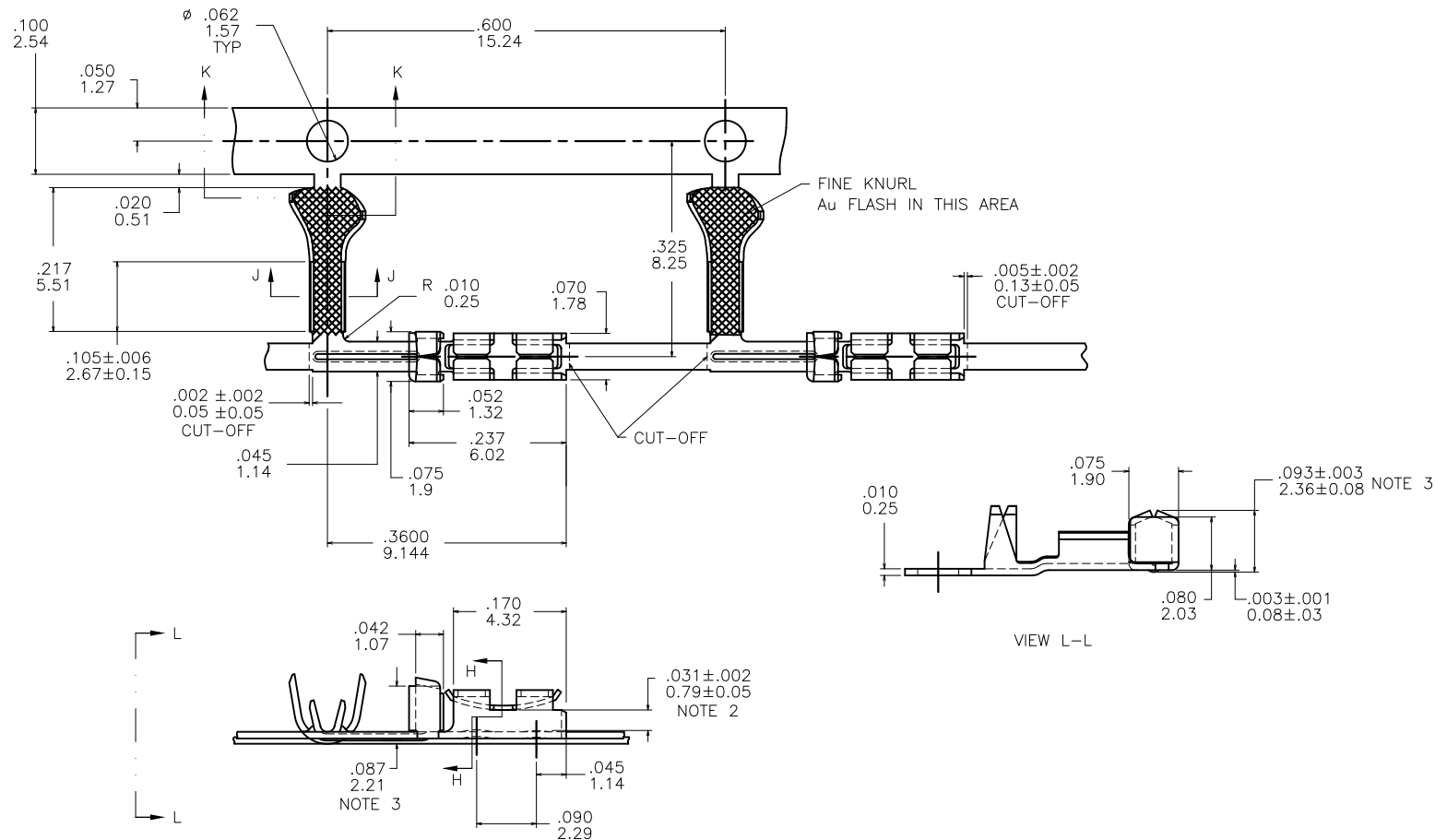
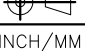


PRODUCT NUMBER  
 SEE TABLE


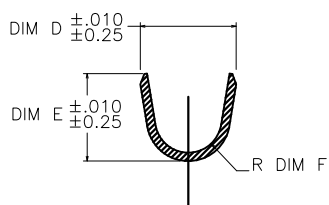
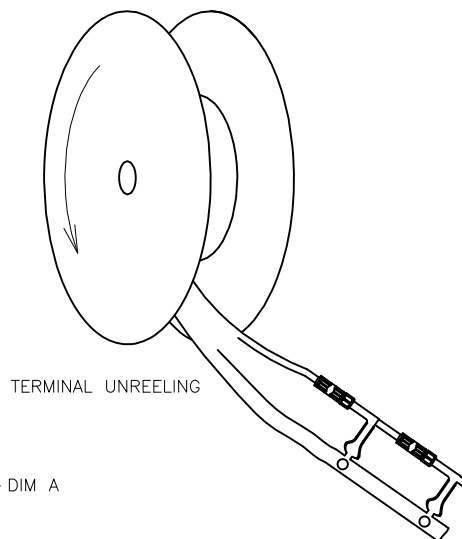
mat'l. code				surface	tolerance	projection	product family		
-							PV TERMINALS		
ltr	ecr no	dr	date	tolerances unless otherwise specified		 INCH/MM	title <b>JUMBO PV™ RECEPTACLE</b> <b>R/A FOR .040/1.02 PIN</b>		
H	V-003800	HTB	2011-05-16	angles	$XX \pm .01/XX \pm 3$ $XXX \pm .005/XXX \pm 13$ $XXXX \pm .0020/XXX \pm .051$				
C	V81871	RGD	10/22/98	0° ±2°		scale 4:1	dwg no <b>92053</b> type CUSTOMER Drawing		
D	V92182	RGD	12/14/99	dr	J.W. BAIR	4/29/92			
E	V05-0229	HTB	3/11/05	enfr	T. HANNA	4/29/92	sheet 1 of 3 size <b>A4</b>		
F	V05-0315	HTB	4/5/05	chr	T. BREWBAKER	1/13/94			
G	V06-0625	HTB	2005-07-05	appd	T. HANNA	1/13/94			
sheet	revision	H	H	H					
index	sheet	1	2	3					

PRODUCT NUMBER NOTE 4	WIRE BARREL			INSULATION BARREL			WIRE SIZE AWG.	BODY PLATING	SPRING PLATING	MATERIAL BODY	JUMBO PV DISCRETE CONTACT		
	A	B	C	D	E	F					WIRE SIZE AWG.	CRIMP HEIGHT	INSULATION DIA
92053-X01	.104 2.64	.104 2.64	.021 0.53	.139 3.53	.120 3.05	.050 1.27	18-20	UNDERPLATING 50u"/1.27u Min Ni CONTACT AREA SEE PLATING TABULATION Au FLASH IN CRIMP AREA	Au FLASH OVER 50u"/ 1.27u Ni	1/4 HD BRASS	18 AWG 20 AWG	.046-.048 .039-.042	.042-.103

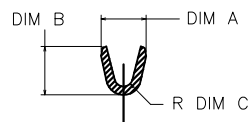
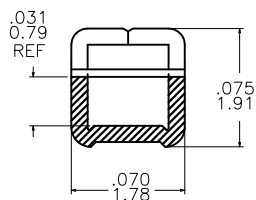
## CONTACT AREA PLATING

92053-0XX	30u"/.76uM Au
92053-1XX	75u"/1.9uM Au

NOT AVAILABLE

SECTION K-K  
N.T.S.

TERMINAL UNREELING

SECTION J-J  
N.T.S.SECTION H-H  
SCALE 10:1

## NOTES :

- PART TO MATE WITH .040/1.02 SQ. OR ROUND PIN.
- MEASURED FROM TOP OF CONTACT BUMP TO CENTER OF BOTTOM OF SPRING.
- MEASURED FROM BOTTOM OF STIFFENER EMBOSS.
- ADD AN LF SUFFIX TO PART NUMBERS FOR PRODUCT THAT MEETS EUROPEAN UNION DIRECTIVES AND OTHER COUNTRY REGULATIONS AS DESCRIBED IN GS-22-008.
- THIS PRODUCT IS NOT INTENDED TO BE EXPOSED TO MANUFACTURING SOLDERING PROCESSES.

mat'l. code				surface	tolerance	projection	product family	
ltr				ecr no	dr	date	PV TERMINALS	
H				tolerances unless otherwise specified			title	
				angles	to go	XX ±.01/X±3	INCH/MM	
				0° ±2°	XXXX ±.0020/XXX±.051	scale 4:1	JUMBO PV™ RECEPTACLE	
				dr	J.W. BAIR	4/26/92	R/A FOR .040/1.02 PIN	
				enr	T. HANNA	4/26/92	dwg no	
				chr	T. BREWBAKER	1/13/94	sheet 2 of 3	
				appd	T. HANNA	1/13/94	size	
sheet index				revision sheet			CUSTOMER Drawing	
							92053	
							A4	

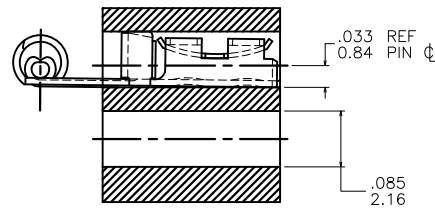
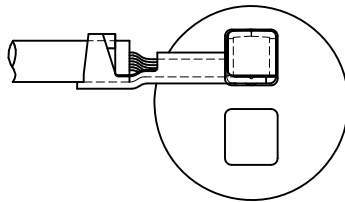
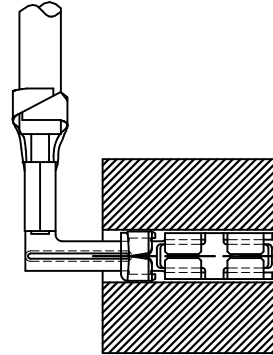
PRODUCT NUMBER  
 SEE TABLE

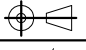

1 2

3

4

## APPLICATION

 CRIMPED TERMINAL SHOWN  
 INSERTED INTO FERRITE  
 FOR REFERENCE ONLY


mat'l. code				surface	tolerance	projection	product family		
-							PV TERMINALS		
ltr	ecr no	dr	date	tolerances unless otherwise specified			 INCH/MM scale 4:1		
H				angles	$XX \pm 0.1/XX \pm 3$ $XXX \pm 0.05/XX \pm 13$ $0^\circ \pm 2^\circ$ $XXXX \pm 0.020/XXX \pm 0.051$				
				dr	J.W. BAIR	4/26/92			
				engr	T. HANNA	4/26/92			
				chr	T. BREWBAKER	1/13/94			
				appd	T. HANNA	1/13/94			
sheet index	revision sheet						title <b>JUMBO PV™ RECEPTACLE</b> <b>R/A FOR .040/1.02 PIN</b>		
							dwg no <b>92053</b>		
							type CUSTOMER Drawing		
							sheet 3 of 3	size	
								A4	

# Mouser Electronics

Authorized Distributor

Click to View Pricing, Inventory, Delivery & Lifecycle Information:

[Amphenol:](#)

[92053-001](#)