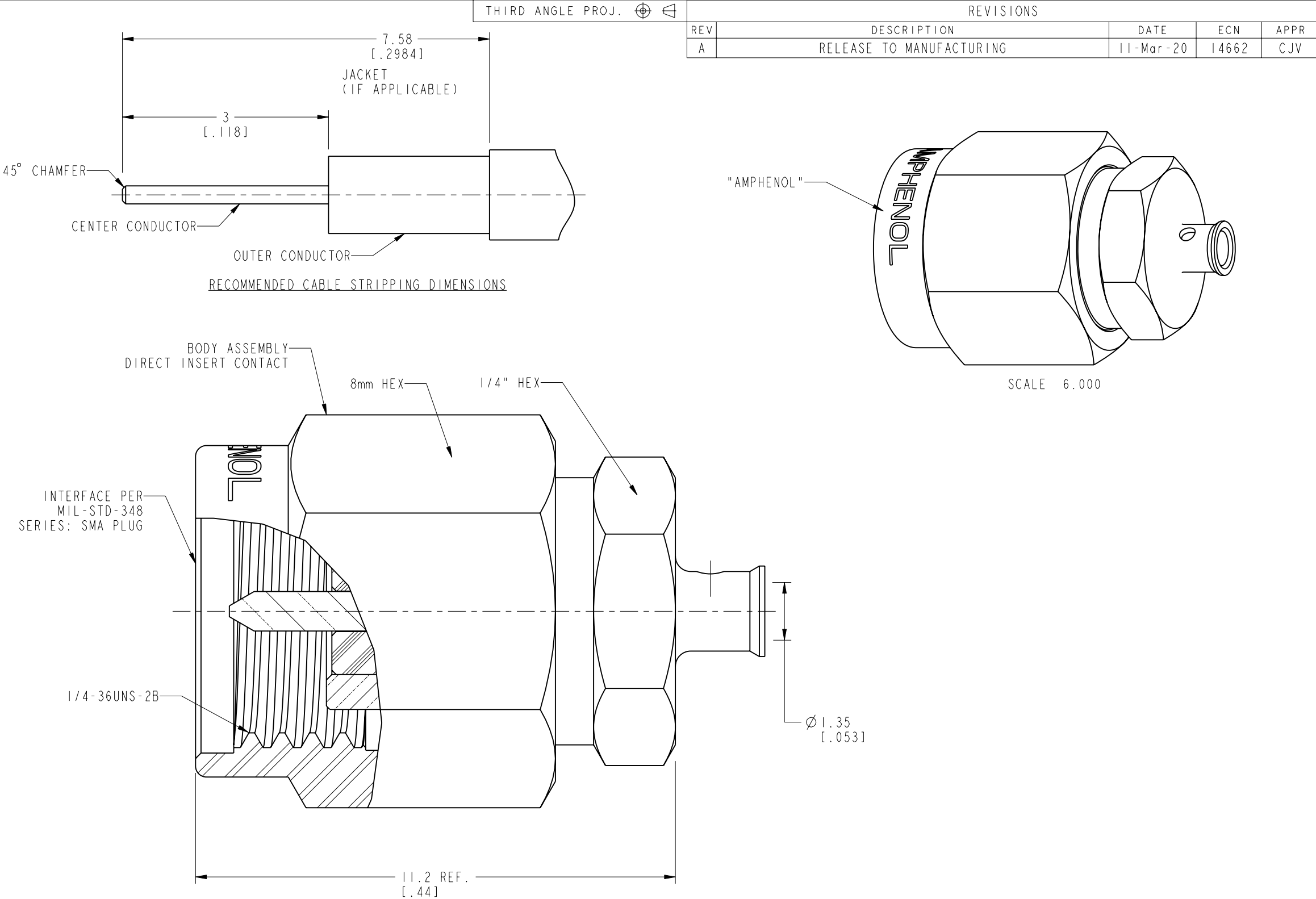


NOTES:

1. MATERIALS AND FINISHES:
BODY - BRASS, GOLD PLATING
CONTACT - BeCu, GOLD PLATING
INSULATOR - PTFE, NATURAL
COUPLING NUT - STAINLESS STEEL, PASSIVATED
INSULATOR BEAD - ULTEM, NATURAL
GASKET - SILICONE RUBBER, RED
RETAINING RING - SUS 304, NATURAL
2. ELECTRICAL:
A. IMPEDANCE: 50 OHM
B. FREQUENCY RANGE: DC-34 GHz
C. VSWR: 1.20 DC-26.5 GHz, MAX.
1.35 26.5-34 GHz, MAX.
D. DIELECTRIC WITHSTANDING VOLTAGE: 500 VRMS, MIN.
3. MECHANICAL:
A. DURABILITY: 500 CYCLES MIN.
B. TEMPERATURE RANGE: -65° C TO +165° C
4. PACKAGING:
A. QUANTITY: SINGLE PACK
B. MARKING: PACKAGING TO BE MARKED
"AMPHENOL RF, 901-10710, DATE CODE"



CUSTOMER OUTLINE DRAWING

ALL OTHER SHEETS ARE FOR INTERNAL USE ONLY

<div>UNLESS OTHERWISE SPECIFIED, DIMENSIONS ARE IN METRIC AND TOLERANCES ARE: <0.5mm 0.5 - 6mm 6 - 30mm 30 - 120mm ANGLES ± 0.05mm ±0.1mm ±0.2mm ± 0.3mm ±1°</div> <div>NOTICE - These drawings, specifications, or other data (1) are, and remain the property of Amphenol corp. (2) must be returned upon request; and (3) are confidential and not to be disclosed to any person other than those to whom they are given by Amphenol Corp. the furnishing of these drawings, specifications, or other data by Amphenol Corp., or to any other person to anyone for any purpose is not to be regarded by implication or otherwise in any manner licensing, granting rights to permitting such holder or any other person to manufacture, use or sell any product, process or design, patented or otherwise, that may in any way be related to or disclosed by said drawings, specifications, or other data.</div>	MATERIAL	DRAWN	DATE	TITLE		Amphenol RF www.amphenolrf.com	
	SEE NOTES	WIKI	18-Mar-20				
	REFERENCE	ENGINEER	DATE	SMA SOLDER PLUG ANTI-TORQUE BODY .047" CABLE		DRAWING NO. 901-10710	
	EAR# 6826.1	STAR	18-mar-20			ITEM NO. 901-10710	
	REF: ---	APPROVED	DATE	SCALE: 10.0:1.0		SHEET 2 OF 2	
CONFIGURATION LEVEL: In Work		S.HSIEH	26-Mar-20	DWG SIZE		REV	
FINISH		CAD FILE		B		A	
						PART NO. 901-10710	

Mouser Electronics

Authorized Distributor

Click to View Pricing, Inventory, Delivery & Lifecycle Information:

[Amphenol:](#)

[901-10710](#)