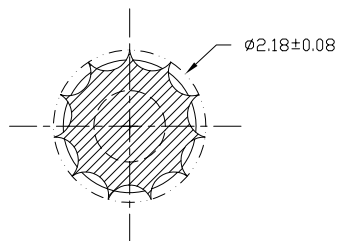
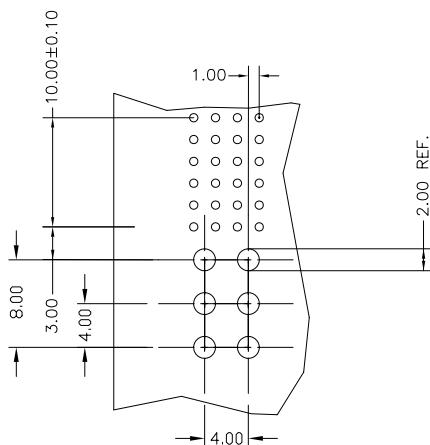
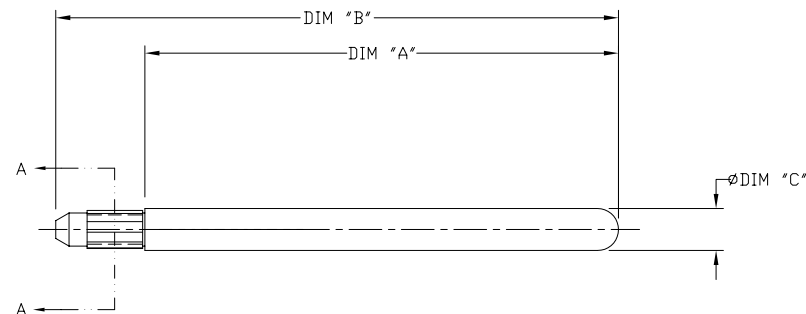


PRODUCT NUMBER	DIM "A"	DIM "B"	DIM "C"	LF OPTION
74749-101	27.10	32.20	2.40	NOTE 4
74749-102 **	10.00	15.10		
74749-202 **	10.00	15.10	3.43	

** CUSTOMER SPECIAL - THIS PART
WILL NOT WORK IN ALL APPLICATIONS.



SECTION A - A
SCALE 4:1



RECOMMENDED HOLE PATTERN
COMPONENT SIDE

NOTES:

1. MATERIAL: STAINLESS STEEL, TYPE 303.
FINISH: PASSIVATED.
2. THIS GUIDE PIN IS INTENDED TO BE INSERTED INTO A 2.00±.08
NONPLATED THROUGH HOLE.
3. THIS KEYING PIN IS TO BE USED WITH RECEPTACLE
P/N 88916.
4. ADD 'LF' SUFFIX AT THE END OF PART NUMBER
FOR LEAD FREE OPTION.
5. THIS PRODUCT MEETS EUROPEAN UNION DIRECTIVES AND OTHER
COUNTRY REGULATION AS DESCRIBED IN GS-22-008.

mat'l. code SEE NOTE 1				surface ISO 1302 ✓	tolerance ISO 406 ISO 1101	projection MM	product family METRAL (tm)
ltr	ecr	no	dr	date	tolerances unless otherwise specified		title
A	V80809	MDF	4/24/98		angles	.XX±0.3	PRESS-FIT KEYING PLUG PIN
B	V81424	GCR	8/18/98		linear	.XX±0.13	
C	V20723	CGD	4/15/02		σ±2'	.XXX±0.051	
D	V21645	TAB	10/15/02	dr	M. FETROW	4/24/98	scale 3:1
E	V04-0068	HTB	2/06/04	enr	C. PENDLETON	4/24/98	FCI
F	M06-0286	MNR	7/27/06	chr	C. PENDLETON	4/24/98	
G	M06-0400	MHT	10/10/06	appd	C. PENDLETON	4/24/98	
sheet	revision	G					dwg no
index	sheet	1					74749
							type
							Product Customer Drawing

Mouser Electronics

Authorized Distributor

Click to View Pricing, Inventory, Delivery & Lifecycle Information:

[Amphenol:](#)

[74749-101LF](#) [74749-102LF](#)