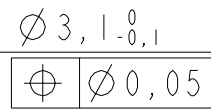
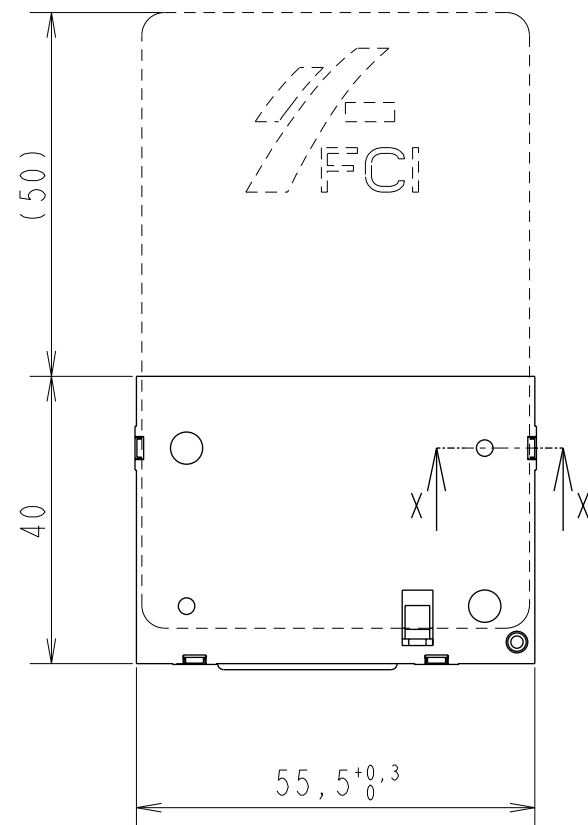




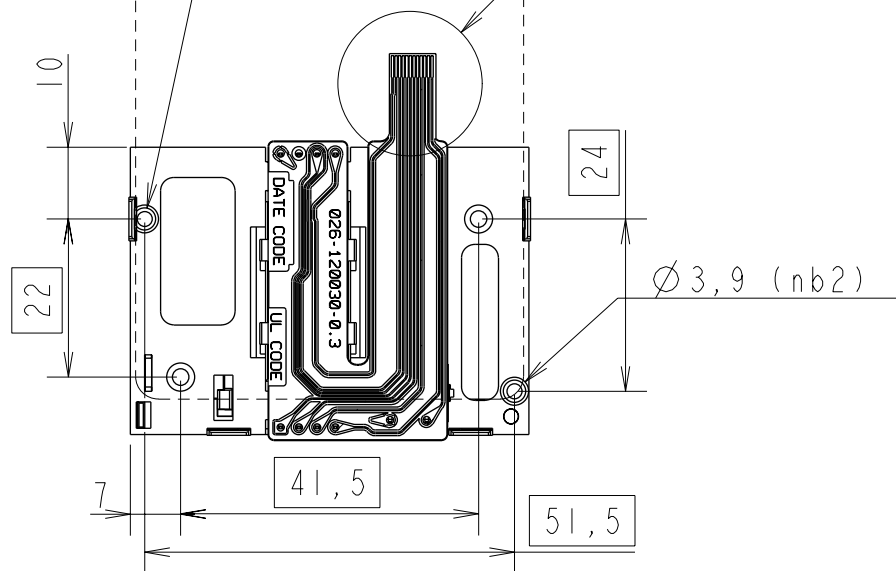
Copyright FCI.

C

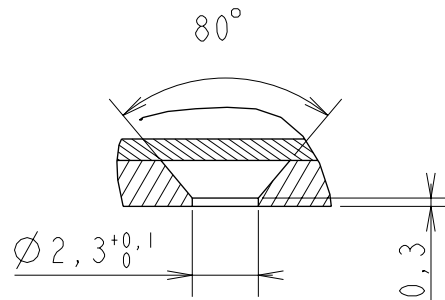
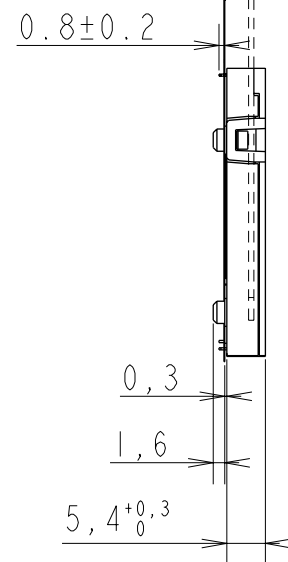
D



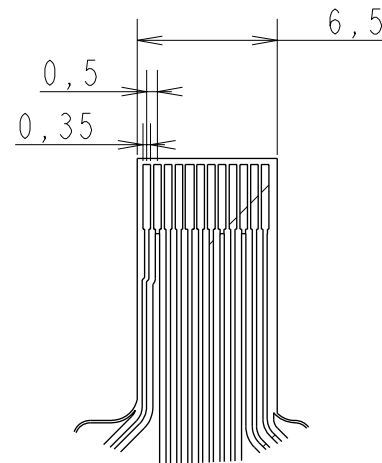
SEE DETAIL A



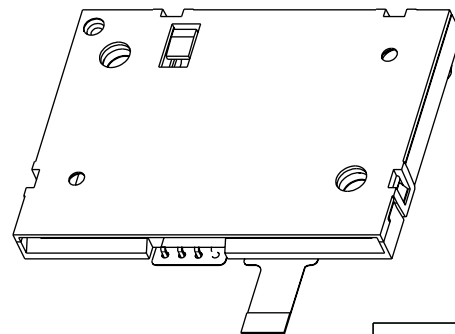
PARTS NUMBER	LEAD FREE
7361E0225S17	7361E0225S17LF



SECTION X-X
SCALE 4:1



DETAIL A
SCALE 3:1



rev	ecn no	dr	date
2	-	DTK	2005/11/03
A	106-0025	DTK	2006/03/01
B	106-0084	SSC	2006/06/21
C	108-0092	SSC	2008/07/25
-	-	-	-
-	-	-	-
-	-	-	-

www.fciconnect.com			surface -- /		tolerance std		projection		mm					
			ISO 1302		ISO 406 ISO 1101									
			TOLERANCES UNLESS OTHERWISE SPECIFIED											
Dr	DILIPTHOMAS	2005/05/11	ANGULAR	LINEAR	0.X	±	size	A3	Scale 1:1					
Eng	DILIPTHOMAS	2005/05/11			0.XX	±								
Chr	S.S.CHERIAN	2008/07/25			0°	±°					0.XXX	±		
Appr	S.S.CHERIAN	2008/07/25	Product family		MOBILE I/O		Spec ref		--					
			title			E02 CARD READER-U FLEX			dwg no		7361E0225S17		Rev.	
						PROTECTED SLIDING						C		
			catalog no			SEE TABLE			CUSTOMER			sheet 1 of 1		

Mouser Electronics

Authorized Distributor

Click to View Pricing, Inventory, Delivery & Lifecycle Information:

[Amphenol:](#)

[7361E0225S17LF](#)