

5 3 6 1 2 -

## PLATING

S=15μ"[0.38μm]GOLD  
ON CONTACT AREA (NOTE 13)  
150μ"[3.81μm]TIN/LEAD ON TAIL

G=30μ"[0.76μm]GOLD (NOTE 13)  
ON CONTACT AREA  
150μ"[3.81μm]TIN/LEAD ON TAIL

LEAD FREE PLATING

S=15μ" [0.38μm] GOLD (NOTE 13)  
ON CONTACT AREA  
100μ" [2.54μm] TIN ON TAIL

G=30μ" [0.76μm] GOLD (NOTE 13)  
ON CONTACT AREA  
100μ" [2.54μm] PURE TIN ON TAIL

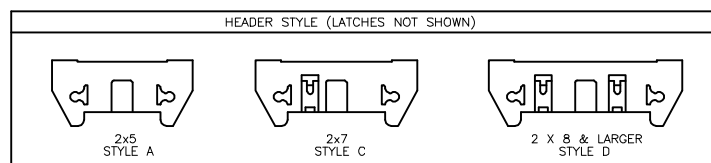
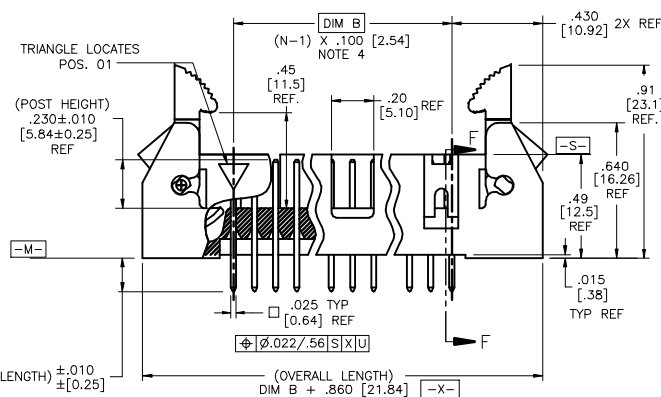
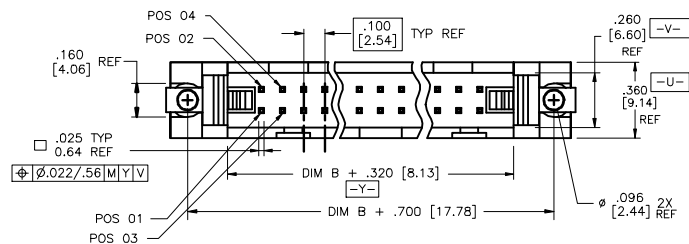
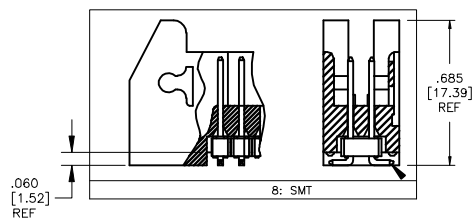
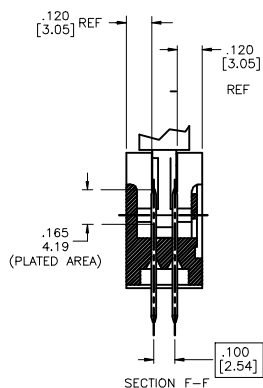
-LEAD FREE OPTION  
NOTE 10,11



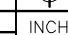
RETENTION  
R= RETENTION LEG

—POLARIZATION  
NOTE 9

TAIL LENGTH  
1=.085/2.16  
2=.112/2.84  
4=.120/3.05  
6=.150/3.81  
7=.675/17.15  
8= SMT

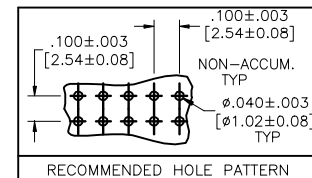
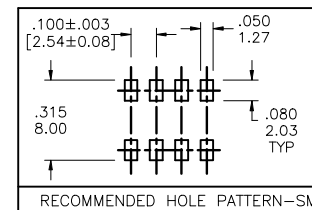
DASH NO.	POSITIONS	HEADER STYLE
10	2 X 5	A
14	2 X 7	C
16	2 X 8	D
20	2 X 10	D
26	2 X 13	D
34	2 X 17	D
40	2 X 20	D
50	2 X 25	D



mat'l code				surface ISO 1302 ✓		tolerance ISO 406 ISO 1101		projection 		product family QUICKIE			
ltr	ecn no	dr	date	tolerances unless otherwise specified						title			
D	VO1862	MEM	7/26/00	angles		.XXX.01/X40.3		INCH/MM		.100/2.54cc EJECT LATCH			
E	VO2309	MEM	9/11/00	linear		.XXXX.006/X40.0.13				SHOROUDED VERTICAL HEADER			
F	C10004	MDF	2/26/01	D. 0'±2"		.XXXXX.0020/X40.0.051		scale 1:1		dwg no			
G	M05-0089	ERE	5/20/05	dr		D. INGRAM 7/12/99				sheet 1 of 2 size			
H	M06-0289	AGS	7/28/06	engr		L. GREEN 7/21/99				53612			
J	M08-0237	MHT	8/25/08	chr		L. GREEN 7/21/99				A			
K	M08-0273	MHT	9/26/08	appd		L. GREEN 7/21/99				type			
sheet index		revision sheet		K	K								
				1	2								

NOTES:

- ① HOUSING MAT'L: HIGH TEMPERTURE THERMOPLASTIC. UL94V-0.  
COLOR : BLACK
- ② PIN MATERIAL: PHOSPHOR-BRONZE
- ③ 3 LBS/1.36 KG MIN. RETENTION.
- ④ TO DETERMINE DIMENSION:  
N = NUMBER OF POSITIONS.  
EXAMPLE: 10 POS., (N-1) x .100[2.54]=.900[22.87]
- ⑤ RETENTIVE LEG:  
RETENTIVE LEG APPLICABLE TO TAIL LENGTH .120/3.05 ONLY.  
RETENTION IS APPLIED TO FOUR PINS ON PART SIZES OF 2x14 AND SMALLER,  
AND APPLIED TO EIGHT PINS ON PARTS SIZES OF 2x15 AND LARGER.  
5LB/2.3KG MAX INSERTION FORCE AND .25LB./1KG MIN RETENTION FORCE  
PER RETENTIVE PIN USING .062/1.57 THICK CIRCUIT BOARD AND RECOMMENDED  
HOLE PATTERN. RETENTIVE LOCATION AT THE DISCRETION OF THE MANUFACTURER.  
OMIT FROM PRODUCT NUMBER IF THIS FEATURE IS NOT APPLICABLE.
6. PACKAGED IN TRAYS.
8. UNDERPLATING: 50μ"/1.27μm Ni.
- ⑨ FOR POLARIZATION, SPECIFY POSITION NUMBER (i.e.. 03= PIN 3) TO OMIT PIN.  
OMIT FROM PRODUCT NUMBER IF THIS FEATURE IS NOT APPLICABLE.
- ⑩ ADD "LF" SUFFIX AT THE END OF PART NUMBER FOR LEAD FREE OPTION.
- ⑪ THIS PRODUCT MEETS EUROPEAN UNION DIRECTIVES AND OTHER  
COUNTRY REGULATION AS DESCRIBED IN GS-22-008.
12. THE HOUSING WILL WITHSTAND EXPOSURE TO 260°C PEAK TEMPERATURE  
FOR 15 SECONDS IN A WAVE SOLDER APPLICATION WITH A 1.5mm  
MINIMUM THICK CIRCUIT BOARD. SEE APPLICATION NOTES/PROCEDURES  
IF THEY ARE AVAILABLE.  
  
THE HOUSING WILL WITHSTAND EXPOSURE TO 260°C PEAK TEMPERATURE  
FOR 20 SECONDS IN A CONVECTION, INFRA-RED OR VAPOR PHASE REFLOW  
OVEN. SEE APPLICATION NOTES/PROCEDURES IF THEY ARE AVAILABLE.
- ⑬ PLATING OPTIONS:  
MAY BE EITHER GOLD OR GXT PLATED AT MANUFACTURER'S OPTION.



mat'l. code				surface ISO 1902		tolerance ISO 406 ISO 1101		projection ISO 1001		product family QUICKIE	
ltr	ecn no	dr	date	tolerances unless otherwise specified							
K				angles	linear	.XX±.01/XX±0.3		INCH/MM		title	
				0°±2°		.XXX±.005/XX±0.13		scale 1:1		.100/2.54cc EJECT LATCH	
				dr	D. INGRAM	7/12/99	FCJ		SHOROUDED VERTICAL HEADER		
				engr	L. GREEN	7/21/99			dwg no		
				chr	L. GREEN	7/21/99			sheet 2 of 2 size		
				appd	L. GREEN	7/21/99			53612 A3		
sheet index		revision sheet								type Product Customer Drawing	

# Mouser Electronics

Authorized Distributor

Click to View Pricing, Inventory, Delivery & Lifecycle Information:

[Amphenol:](#)

[53612-G14-8](#) [53612-G34-6](#) [53612-S16-8LF](#)