

PRODUCT NUMBER

5 2 6 0 1 - X X X - X X X X X LF

PLATING

S=15μ"[0.38μm]GOLD ON
CONTACT AREA (NOTE 13)
100μ"[2.54μm]TIN ON TAIL

G=30μ"[0.76μm]GOLD ON
CONTACT AREA (NOTE 13)
100μ"[2.54μm]TIN ON TAIL

1=30μ"[0.76μm] Au PLATING

LEAD FREE OPTION
NOTE 10,11,12

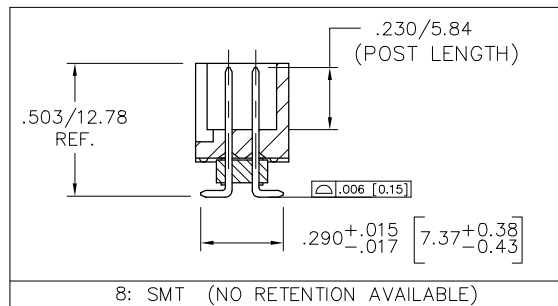
PACKAGE NOTE 5

RETENTION
R= RETENTIVE LEG (NOTE 6)

POLARIZATION
NOTE 9

TAIL	
1	.090/2.29
2	.112/2.84
4	.120/3.05
6	.150/3.81
7	.675/17.15
8	SMT

TOTAL POSITIONS	HDR. STYLE
10 2 x 5	B
14 2 x 7	C
16 2 x 8	D
20 2 x 10	D
26 2 x 13	D
30 2 x 15	D
34 2 x 17	D
40 2 x 20	D
44 2 x 22	D
50 2 x 25	D
60 2 x 30	D

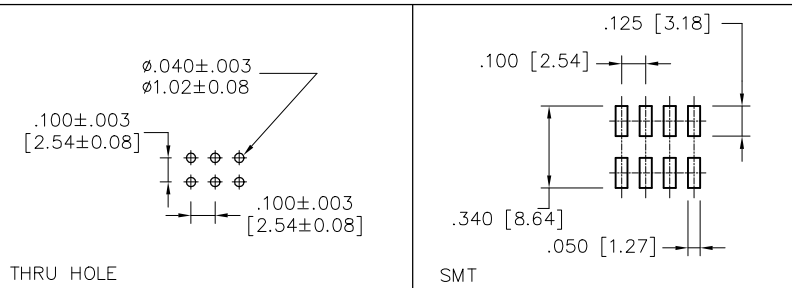
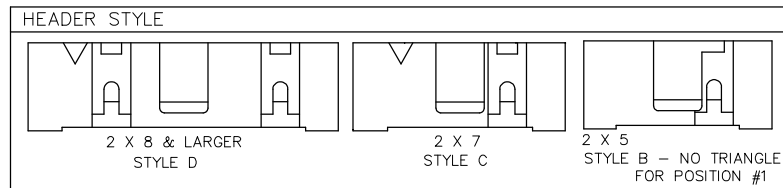
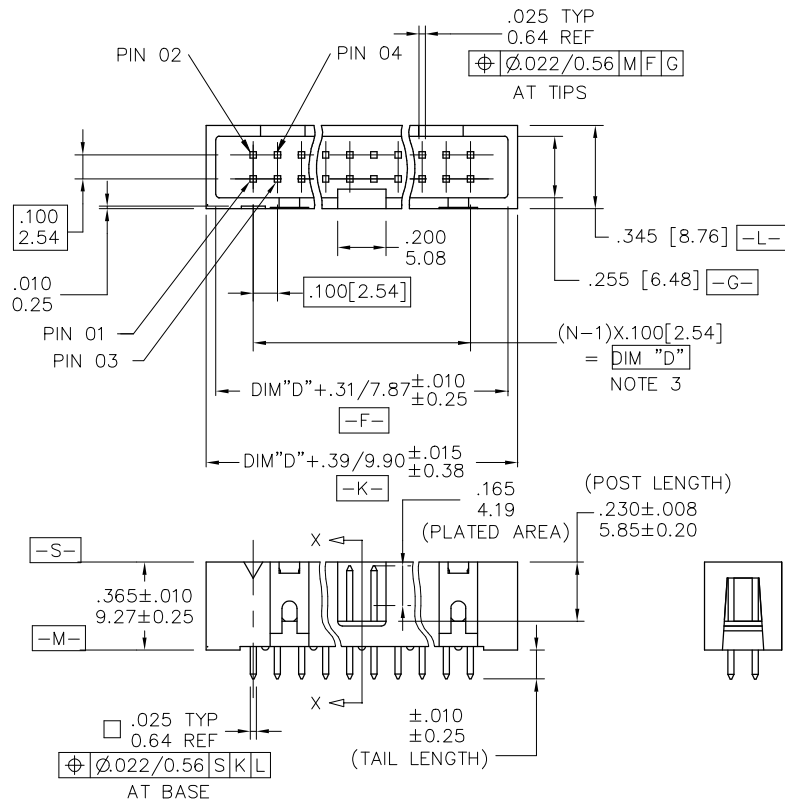


NOTES:

- HOUSING MAT'L: HIGH TEMPERATURE THERMOPLASTIC. UL94V-0
COLOR: BLACK
OR
MINERAL FILLED LCP FLAME RETARDENT
PER UL-94V-0. COLOR: BLACK.
- PIN MATERIAL: PHOSPHOR-BRONZE
- TO DETERMINE DIMENSIONS:
N = NUMBER OF POSITIONS PER ROW
EXAMPLE: 10 POS., (N-1) x .100[2.54]=.900[22.86]
- 3 LBS./1.36 KG MIN. RETENTION
- PACKAGED IN TRAYS,
PART NUMBER FOLLOWS BY "T" SUFFIX ARE PACKAGED
TAPE ON RELL WITH PACK-UP INSTALLED. VACUUM CAP TO BE
CENTRALLY LOCATED REGARDLESS OF NUMBER OF POSITIONS (SHEET 3)
- RETENTIVE LEG APPLICABLE TO TAIL LENGTHS .125/3.18 MAX.
5LB/2.3KG MAX INSERTION FORCE AND .25LB./1KG MIN RETENTION FORCE
PER RETENTIVE PIN USING .062/1.57 THICK CIRCUIT BOARD AND RECOMMENDED
HOLE PATTERN. RETENTIVE LOCATION AT THE DISCRETION OF THE MANUFACTURER.
RETENTION PIN MAY BE SHIFTED TO NEXT POSITION.
- OMIT FROM PRODUCT NUMBER IF THIS FEATURE IS NOT APPLICABLE.
- UNDERPLATING: 50μ"/1.27μm Ni.
- FOR POLARIZATION SPECIFY POSITION NUMBER (i.e. 03 = PIN 3) TO OMIT PIN.
OMIT FROM PRODUCT NUMBER IF THIS FEATURE IS NOT APPLICABLE.
- ADD "LF" SUFFIX AT THE END OF PART NUMBER FOR LEAD FREE OPTION.
- THE HOUSING WILL WITHSTAND EXPOSURE TO 260°C PEAK TEMPERATURE
FOR 15 SECONDS IN A WAVE SOLDER APPLICATION WITH A 1.5mm
MINIMUM THICK CIRCUIT BOARD. SEE APPLICATION NOTES/PROCEDURES
IF THEY ARE AVAILABLE.

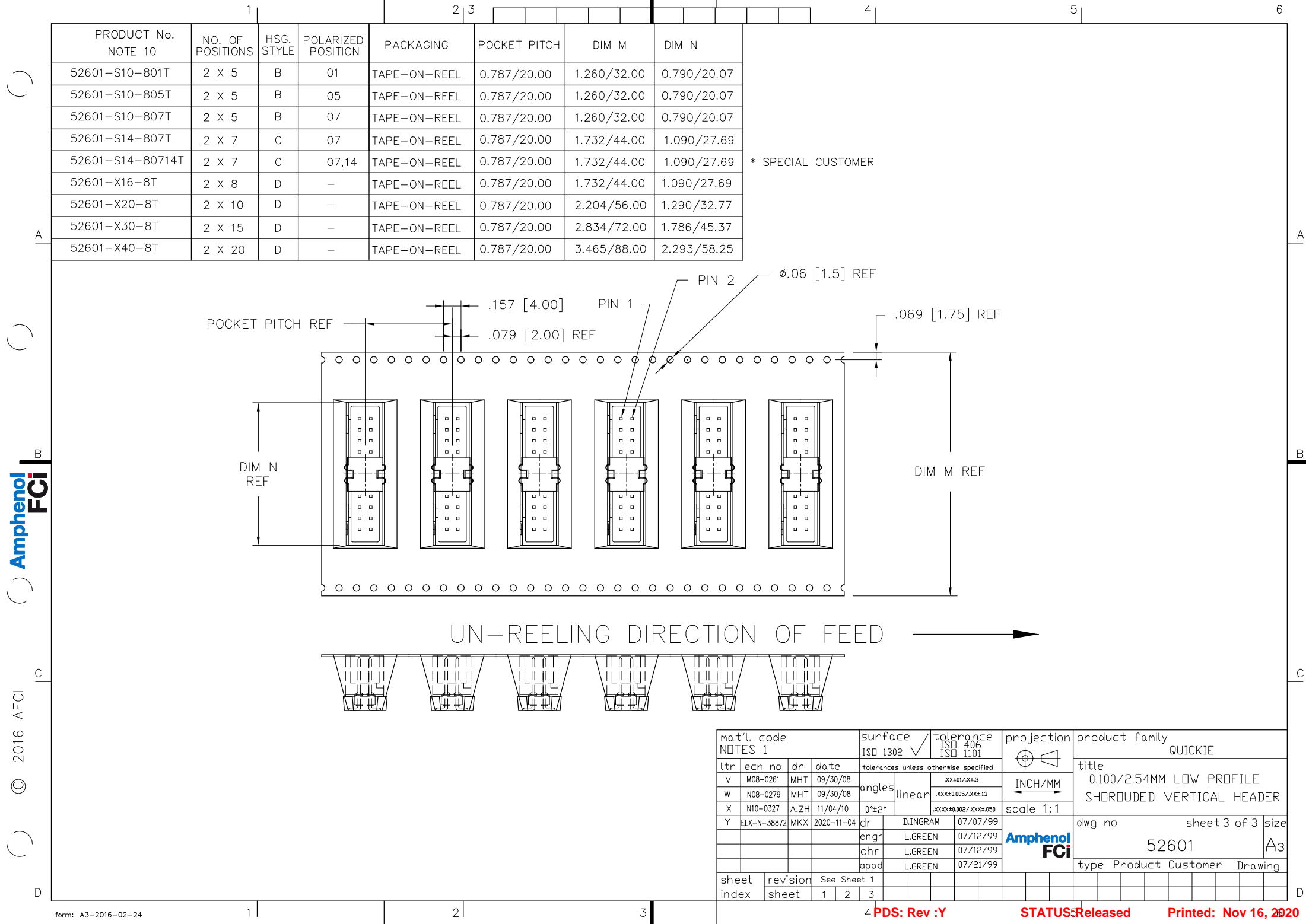
THE HOUSING WILL WITHSTAND EXPOSURE TO 260°C PEAK TEMPERATURE
FOR 20 SECONDS IN A CONVECTION, INFRA-RED OR VAPOR PHASE
REFLOW OVEN. SEE APPLICATION NOTES/PROCEDURES IF THEY ARE AVAILABLE.
- THIS PRODUCT MEETS EUROPEAN UNION DIRECTIVES AND OTHER
COUNTRY REGULATION AS DESCRIBED IN GS-22-008.
- PLATING OPTIONS:
MAY BE EITHER GOLD OR GXT PLATED AT MANUFACTURER'S OPTION.

mat'l. code NOTES 1				surface ISO 1302 ✓	tolerance ISO 406 ISO 1101	projection INCH/MM	product family QUICKIE
ltr	ecn no	dr	date	tolerances unless otherwise specified			title 0.100/2.54MM LOW PROFILE SHORDED VERTICAL HEADER
V	M08-0261	MHT	09/30/08	angles	linear		
W	N08-0279	MHT	09/30/08			scale 1:1	dwg no 52601 sheet 1 of 3 size A3
X	N10-0327	A.ZH	11/04/10	0°±2°			
Y	ELX-N-38872	MKX	2020-11-04	dr	D.INGRAM	07/07/99	type Product Customer Drawing
				enr	L.GREEN	07/12/99	
				chr	L.GREEN	07/12/99	
				appd	L.GREEN	07/21/99	
sheet index	revision sheet	Y	Y	Y			



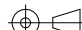

RECOMMENDED BOARD LAYOUT

mat'l. code NOTES 1				surface ISO 1302 <input checked="" type="checkbox"/>	tolerance ISO 406 ISO 1101	projection 	product family QUICKIE			
V	M08-0261	MHT	09/30/08	tolerances unless otherwise specified		INCH/MM	title 0.100/2.54MM LOW PROFILE SHROUDED VERTICAL HEADER			
W	N08-0279	MHT	09/30/08	angles	linear					
X	N10-0327	A.ZH	11/04/10	0°±2°		scale 1:1	dwg no 52601			
Y	ELX-N-38872	MKX	2020-11-04	dr	D.INGRAM	07/07/99				
				enr	L.GREEN	07/12/99	type Product Customer Drawing			
				chr	L.GREEN	07/12/99				
				appd	L.GREEN	07/21/99	sheet 2 of 3			
sheet index	revision sheet	See Sheet 1	1	2	3					



Amphenol FCI

© 2016 AFCl

mat'l. code NOTES 1				surface ISO 1302 ✓		tolerance ISO 406 ISO 1101		projection 		product family QUICKIE				
ltr	ecn no	dr	date	tolerances unless otherwise specified						title 0.100/2.54MM LOW PROFILE SHOROUDED VERTICAL HEADER				
V	M08-0261	MHT	09/30/08	angles	linear	.XX±01/.X±3				scale 1:1				
W	N08-0279	MHT	09/30/08			.XXX±0.005/.XXX±13								
X	N10-0327	A.ZH	11/04/10	0°±2°	.XXXX±0.002/.XXX±050			<div>Amphenol FCI</div>						
Y	ELX-N-38872	MKX	2020-11-04	dr	D.INGRAM	07/07/99								
				enr	L.GREEN	07/12/99		dwg no 52601						
				chr	L.GREEN	07/12/99								sheet 3 of 3
				appd	L.GREEN	07/21/99		size A3						
sheet index				revision		See Sheet 1		type Product Customer Drawing						
		sheet		1	2	3								

Mouser Electronics

Authorized Distributor

Click to View Pricing, Inventory, Delivery & Lifecycle Information:

[Amphenol:](#)

[52601-G10-8LF](#)