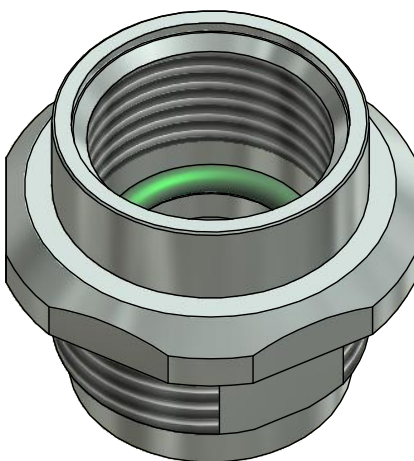
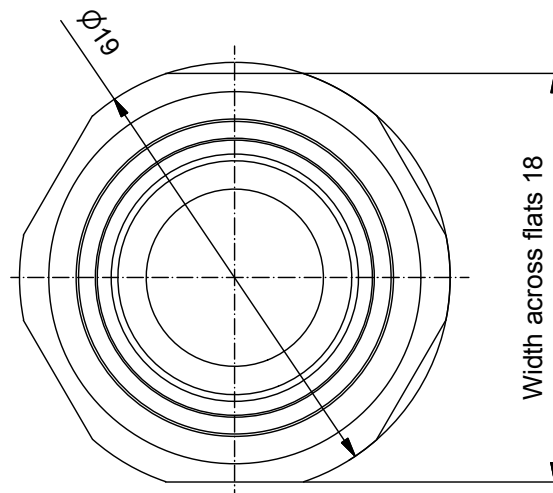
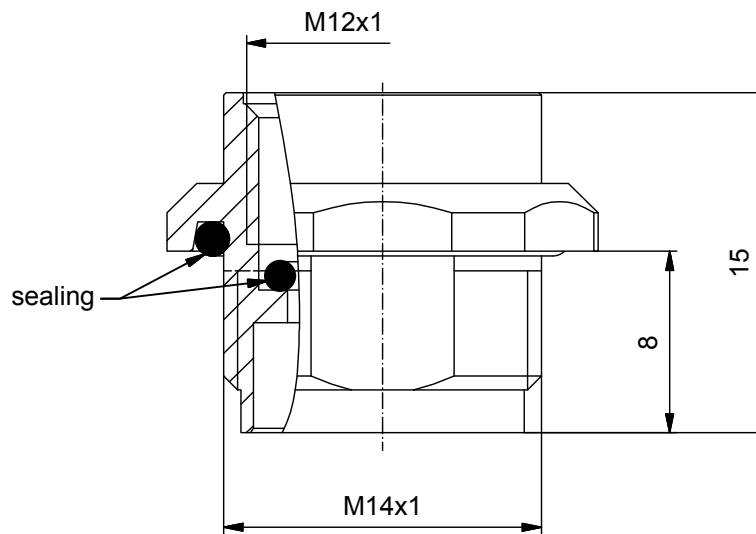


Materials:

Material housing: CuZn

Plating housing: Nickel gal.

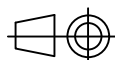
Sealing: FKM



DO NOT ALTER CAD DRAWING BY HAND

Directive 2002/95/EC RoHS compliant

general tolerance:	0	± 0,50mm
	0,0	± 0,25mm
	0,00	± 0,10mm
THIS DRAWING MAY NOT BE COPIED OR REPRODUCED IN ANY WAY, AND MAY NOT BE PASSED ON TO A THIRD PARTY WITHOUT WRITTEN PERMISSION. OWNERSHIP AND COPYRIGHT OF CONEC GmbH		



dim. in mm

	date	name
drawn	13.01.2016	Willer
appd.	13.01.2016	Brüntrup

CONEC®

title:

Housing female M14x1 X9

dwg no:

43K1A3226

part no:

43-03059

Mouser Electronics

Authorized Distributor

Click to View Pricing, Inventory, Delivery & Lifecycle Information:

[Amphenol:](#)

[43-03059](#)