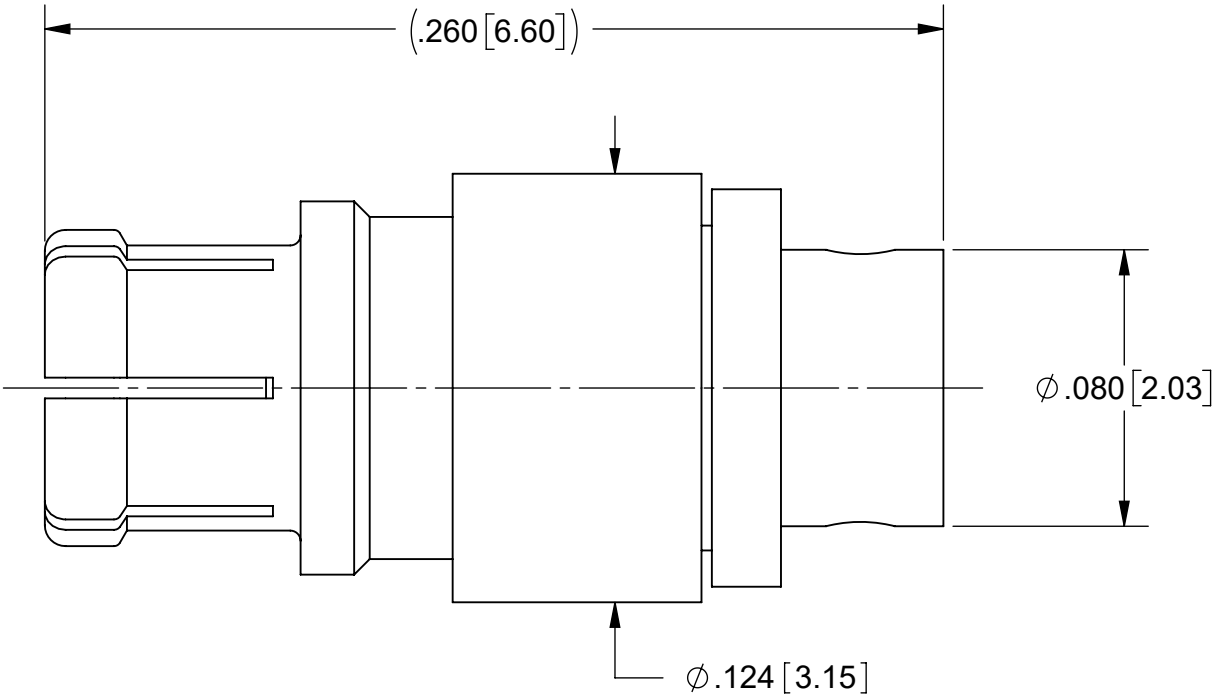
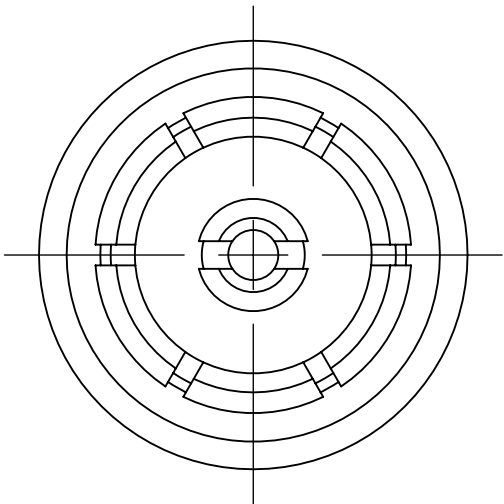
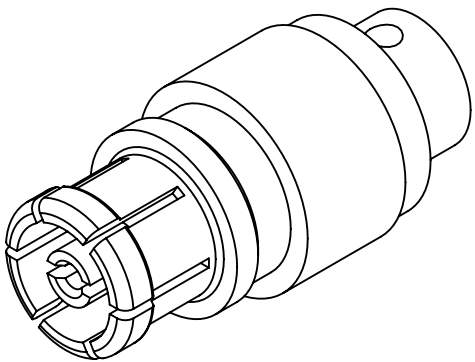


PRODUCT DATA DRAWING

REVISION HISTORY			
REV	DESCRIPTION	DATE	APPROVED
-	NRN 34833	07/08	SEE PDM
A	DCN 41517	07/15	
B	DCN 51539	04/22	



MATERIAL:


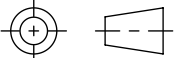
BODY & CONTACT:	BERYLLIUM COPPER
FERRULE:	BRASS
INSULATOR:	PTFE

FINISH:

BODY, CONTACT & FERRULE:	GOLD OVER NICKEL
--------------------------	------------------

PERFORMANCE:

IMPEDANCE:	50 OHMS
FREQ. RANGE:	DC TO 65.0 GHz.
VSWR:	1.15:1 DC TO 26.5 GHz. 1.25:1 DC TO 40.0 GHz. 1.35:1 DC TO 65.0 GHz.

MATERIAL: SEE NOTES	DIMENSIONS ARE IN INCHES TOLERANCES: FRACTIONAL: ±1/64 ANGULAR: X° ±1°0' X°X' ±15' DECIMAL: .X ±.030 .XX ±.010 .XXX ±.005 INTERPRET DIMENSIONS AND TOLERANCES PER ASME Y14.5M - 1994	UNLESS OTHERWISE SPECIFIED 1) ALL DIMENSIONS ARE IN INCHES (MILLIMETERS) 2) ALL DIMENSIONS ARE AFTER PLATING. 3) BREAK CORNERS & EDGES .005 R. MAX. 4) CHAM. 1ST & LAST THREADS. 5) SURFACE ROUGHNESS 63+MIL-STD-10. 6) DIA.'S ON COMMON CENTERS TO BE CONCENTRIC WITHIN .005 T.I.R. 7) REMOVE ALL BURRS	 www.svmicrowave.com	
FINISH: SEE NOTES			TITLE: SMPM STRAIGHT FEMALE FOR Ø.047 CABLE	
SURFACE AREA: N/A	THIRD ANGLE PROJECTION 	DRAWN: DAL 07/02/08	SIZE B	DWG. NO. 3221-40007
PROPRIETARY THE INFORMATION CONTAINED IN THIS DRAWING IS THE SOLE PROPERTY OF SV MICROWAVE, INC. ANY REPRODUCTION IN PART OR AS A WHOLE WITHOUT THE WRITTEN PERMISSION OF SV MICROWAVE, INC IS PROHIBITED.		CHECKED: SEE PDM APPROVED: SEE PDM	SCALE: 18:1	SHEET 1 OF 1

Mouser Electronics

Authorized Distributor

Click to View Pricing, Inventory, Delivery & Lifecycle Information:

[Amphenol:](#)

[3221-40007](#)