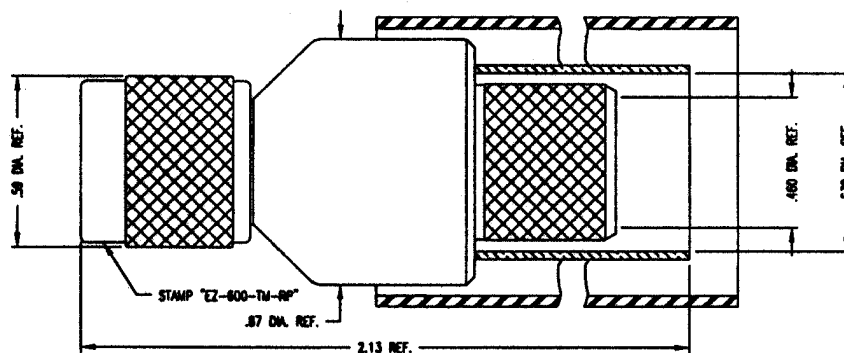


THE REVISION STATUS OF ALL SHEETS OF THIS DRAWING IS THE SAME AS SHEET 1

LTR	DESCRIPTION	DATE	BY
-	Released	6/14/99	JCL



I. MATERIALS & FINISHES

center contact: Gold Plated Beryllium Copper – female pin
 outer contact: Alballoy Plated Brass
 body: Alballoy Plated Brass
 coupling nut: Alballoy Plated Brass
 crimp sleeve: Alballoy Plated Copper
 dielectric: Teflon® PTFE
 gasket: Silicone Rubber
 shrink sleeve: Adhesive Lined Polyolefin
 crimp size: .610" hex

II. ELECTRICAL PROPERTIES

impedance: 50 ohms
 working voltage: 500 vrms (max)
 vswr: 1.25:1 (max) up to 3 GHz
 insertion loss: $0.1 \times \sqrt{F_{ghz}}$

Unless otherwise specified, dimensions are in inches. Tolerances are applicable when specified.

These drawings and specifications contain proprietary information which is the property of Times Microwave Systems.

Approvals

Drawn JCL 6/14/99

Check

Prj. Mgr.

Prd. Mgr.

QA Mgr.



TIMES MICROWAVE SYSTEMS

Wallingford, CT 06492
 (203) 949-8400; (203) 949-8423 Fax
 www.timesmicrowave.com

EZ-600-TM-RP
Reverse Polarity TNC Male (female pin)
for LMR-600 Cable

Size
A

CAGE CODE
68999

Drawing No.:

3190-796

Scale: NA

Rev. ()

Sheet: 1 of 1

Mouser Electronics

Authorized Distributor

Click to View Pricing, Inventory, Delivery & Lifecycle Information:

[Amphenol:](#)
[EZ-600-TM-RP](#)