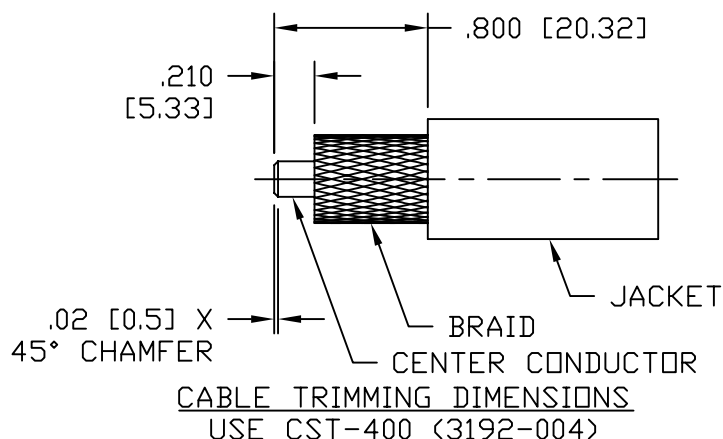
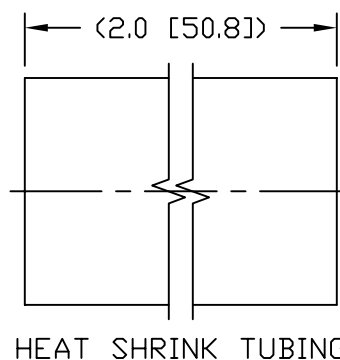
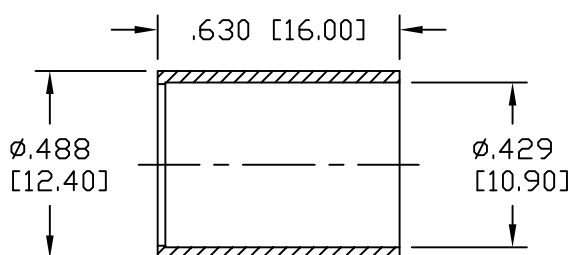
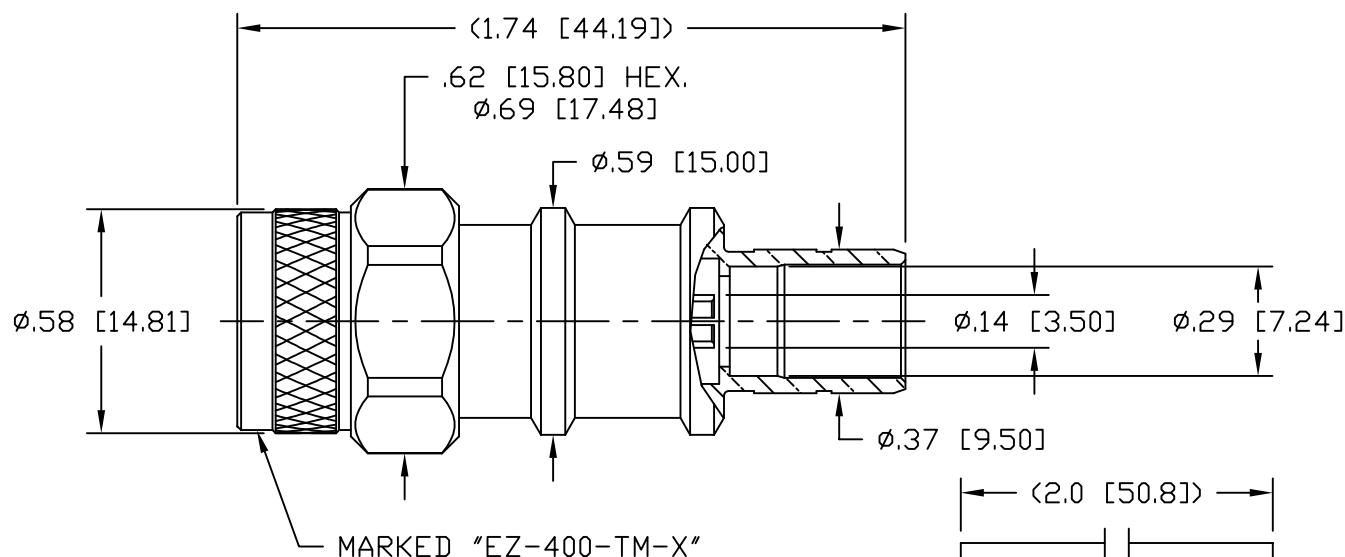


NOTICE OF PROPRIETARY RIGHTS THIS DOCUMENT CONTAINS CONFIDENTIAL TECHNICAL DATA, INCLUDING TRADE SECRETS, PROPRIETARY TO TIMES MICROWAVE SYSTEMS. DISCLOSURE OF THIS DATA IS EXPRESSLY CONDITIONED UPON YOUR ASSENT THAT ITS USE IS LIMITED TO USE WITHIN YOUR COMPANY ONLY. ANY OTHER USE IS STRICTLY PROHIBITED WITHOUT THE PRIOR WRITTEN CONSENT OF TIMES MICROWAVE SYSTEMS.

SYM	REVISION DESCRIPTION	DFTM	DATE	APPD	DATE
A	RELEASED FOR PRODUCTION	K.A.M.	2/25/10	J.D.B.	3/11/10
B	CHANGED PER CDC #34322	D.J.H.	10/12/11	J.D.B.	10/27/11
C	CHANGED PER CDC #36607	D.J.H.	11/16/12	J.D.B.	11/19/12



#### NOTES:

- MATERIALS AND FINISHES:  
BODY: BRASS, ALBALOY PLATING  
COUPLING NUT: BRASS, ALBALOY PLATING  
CENTER CONTACT: BERYLLIUM COPPER, GOLD PLATING  
FERRULE: COPPER, ALBALOY PLATING
- ELECTRICAL:  
IMPEDANCE: 50 OHMS NOMINAL  
FREQUENCY: DC-6 GHz  
VSWR: 1.2 DC-6 GHz  
DIELECTRIC WITHSTANDING VOLTAGE: 1,000 VOLTS RMS
- MECHANICAL:  
DURABILITY: 500 CYCLES MIN.  
TEMPERATURE RANGE: -65°C TO +165°C
- CABLING INSTRUCTIONS:  
A. SLIDE FERRULE OVER CABLE JACKET  
B. TRIM CABLE TO DIMENSIONS SHOWN. MAKE SURE CUTS ARE SHARP AND SQUARE. DO NOT NICK BRAID OR CENTER CONDUCTOR.  
C. FLAIR BRAID SLIGHTLY AND INSERT CABLE INTO BODY UNTIL BOTTOMED. SLIDE THE FERRULE UP THE CABLE AND OVER THE BRAID UNTIL BOTTOMED ON BODY. CRIMP FERRULE USING A .429 HEX.  
5. RECOMMENDED COUPLING NUT TORQUE: 4-6 IN-LBS.

MATL:		UNLESS OTHERWISE SPECIFIED			DFTM. K. A. M.		TIMES MICROWAVE SYSTEMS			
		ALL DIMENSIONS ARE IN INCHES MACHINED SURFACES FINISH 32 RMS MAX. REMOVE ALL BURRS .005 MAX. BREAK MACHINE CORNERS .005 MAX. FILLET R. TOLERANCES ON DECIMALS .XX ± .01                      .XXX ± .005 ANGLES ± 1°                      FRACTIONS ± 1/64			DATE 2/25/10					
USED ON: B					CHKD. J. D. B.		EZ-400-TM-X PLUG, TNC, EZ FOR LMR-400			
					DATE 3/11/10					
					APPD. J. D. B.					
SCALE: ~		DWG. SIZE A	DO NOT SCALE DRAWING	CODE IDENT	68999	DATE 3/11/10		SHT 1 of 1	SD3190-2533	REV C

# Mouser Electronics

Authorized Distributor

Click to View Pricing, Inventory, Delivery & Lifecycle Information:

[Amphenol:](#)

[EZ-400-TM-LW-X](#)