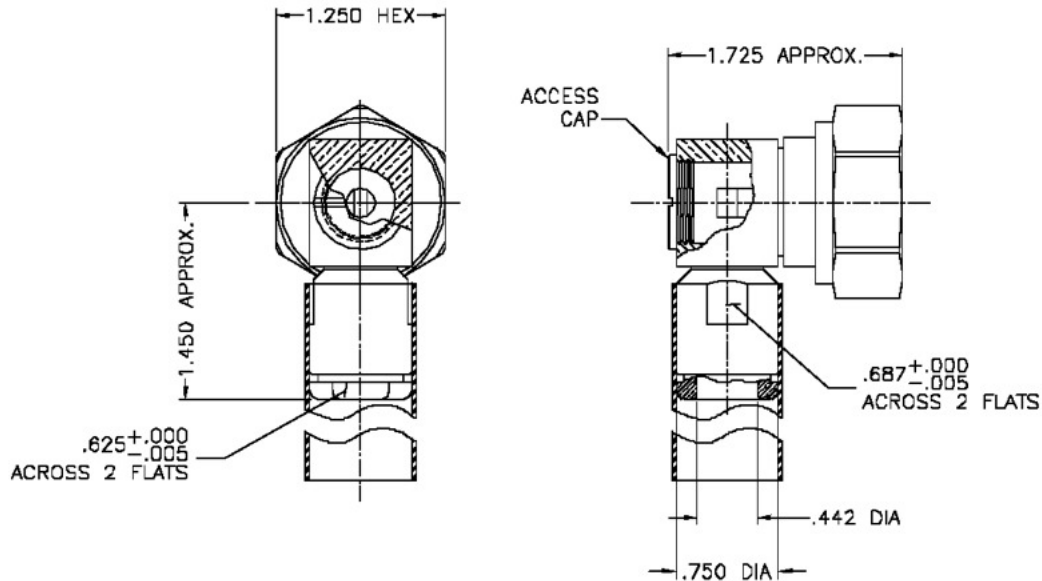


LTR	DESCRIPTION	DATE	BY
-	Released	3/12/04	JCL
A	RoHS Compliant	1/1/06	JCL

**I. MATERIALS & FINISHES**

center contact: Silver Plated Brass
 outer contact: Alballoy Plated Brass
 body: Alballoy Plated Brass
 other metal parts: Alballoy Plated Brass
 gasket: Silicone Rubber
 dielectric: Teflon® PTFE
 shrink sleeve: Adhesive Lined Polyolefin
 attachment: braid clamp

II. ELECTRICAL PROPERTIES

impedance: 50 ohms
 working voltage: 2700 vrms (max)
 vswr: 1.25:1 (max) up to 3 GHz
 insertion loss: $0.15 \times \sqrt{F_{\text{ghz}}}$

Unless otherwise specified, dimensions are in inches. Tolerances are applicable when specified.

These drawings and specifications contain proprietary information which is the property of Times Microwave Systems.

Approvals

Drawn	JCL	3/12/04

**TIMES MICROWAVE SYSTEMS**

Wallingford, CT 06492
 (203) 949-8400; (203) 949-8423.Fax
 www.timesmicrowave.com

TC-400-716MC-RA

**Clamp Type-716 male Right Angle (RoHS Compliant)
 for LMR-400 Cable**

Size A	CAGE CODE 68999	Drawing No.: 3190-1671
-----------	---------------------------	----------------------------------

Scale: NA

Rev. (A)

Sheet: 1 of 1

Mouser Electronics

Authorized Distributor

Click to View Pricing, Inventory, Delivery & Lifecycle Information:

[Amphenol:](#)

[TC-400-716MC-RA](#)