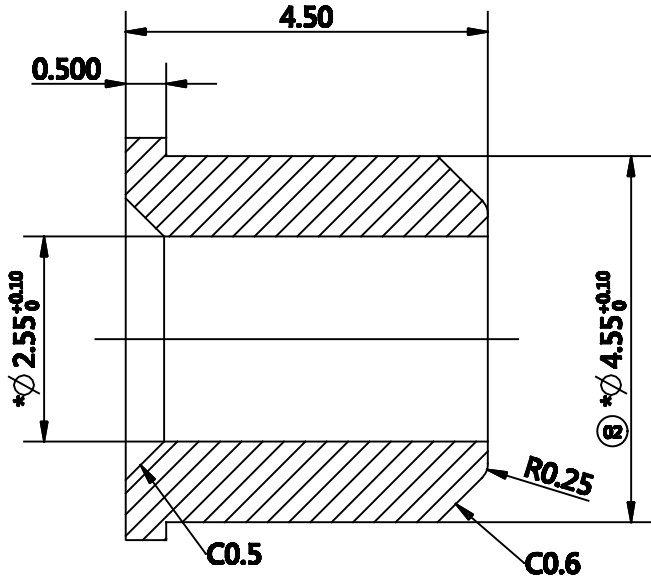
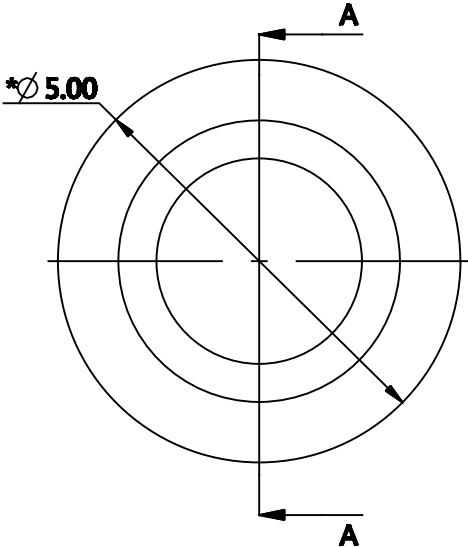
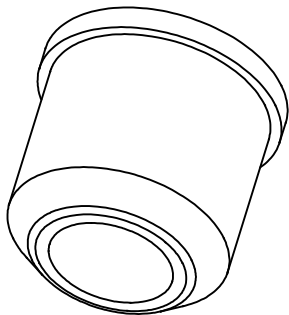


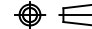
REV	ZONE	ECO	DESCRIPTION	DATE	BY	APPR
01	--	--	RELEASE NUMBER	Jul-16-20	Ronald	Tommy
02	--	--	CHANGE $\phi$ 4.5 to $\phi$ 4.55	Sep-14-20	Ronald	Tommy



SECTION A-A



- NOTES:
- PARTS TO BE FREE OF NICKS, BURRS, FLASH, TOOL MARKS, OR OTHER DEFECTS THAT MAY AFFECT PART FUNCTION.
  - ALL UNSPECIFIED RADIUS TO BE R0.2.
  - ALL DIMENSIONS ARE AFTER SHRINKAGE.
  - "\*" DENOTES KPC (KEY PRODUCT CHARACTERISTIC).
  - ALL DIMENSIONS NOT SHOWN TO BE MEASURED FROM CAD MODEL.
  - ROHS COMPLIANT.

MATERIALS LIST											
UNLESS OTHERWISE SPECIFIED 1) All dimensions are in metric(mm). 2) Tolerances are as follows: 1 PL DEC ±0.20 2 PL DEC ±0.10 Fractions ±1/64 3 PL DEC ±0.05 Angles ±1°			MATERIAL SPECIFICATIONS:		SINE Systems Corporation <hr/> A Subsidiary of Amphenol Corporation						
			PP								
			PROCESS SPECIFICATIONS:		COLLAR						
SIGNATURE		DATE	THIS DRAWING IS SUPPLIED FOR INFORMATION ONLY. DESIGN FEATURES, SPECIFICATIONS AND PERFORMANCE DATA SHOWN HEREON ARE THE PROPERTY OF THE AMPHENOL CORPORATION. NO RIGHTS OF REPRODUCTION ARE IMPLIED. ALL DIMENSIONS ARE SUBJECT TO NORMAL MANUFACTURING VARIATIONS.		DWG NO.		20-80646				
DRAWN	Ronald	Jul-16-20					FSCM NO.	SIZE	MASS	REV	SCALE
CHECKED											
ENGINEER											
APPROVAL											
CUSTOMER											
			SHEET 1 OF 1		NEXT ASS'Y:						

# Mouser Electronics

Authorized Distributor

Click to View Pricing, Inventory, Delivery & Lifecycle Information:

[Amphenol:](#)

[20-80646](#)