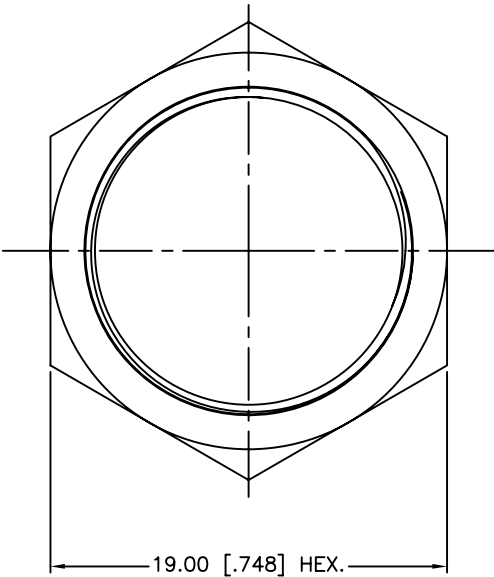
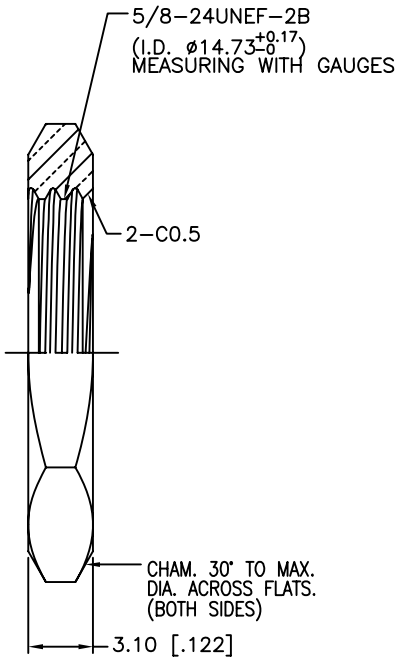


REV.	DATE	ECR NO.	DESCRIPTION
NC	01/14/10	XXXXXX	INITIAL RELEASE



<div> <div> UNLESS OTHERWISE SPECIFIED DIMENSIONS ARE IN MILLIMETERS. DIMENSIONS IN [] ARE IN INCHES AND FOR CUSTOMER REFERENCE ONLY. </div> <div> UNLESS OTHERWISE SPECIFIED TOLERANCES FOR MILLIMETERS ARE: 0.5 - 8mm \pm 0.20mm 8 - 30mm \pm 0.40mm 30 - 120mm \pm 0.50mm </div> <div> UNLESS OTHERWISE SPECIFIED TOLERANCES FOR INCHES ARE: .020 - .315 = \pm 0.007" .315 - 1.180 = \pm 0.015" 1.180 - 4.724 = \pm 0.020" </div> </div>					APPROVALS		DATE	<div>Amphenol Connex</div> <div> <div>PART DESCRIPTION</div> <div>HEX NUT - HN19-5/8-24X31</div> </div>			
					DRAWN	M.ZHANG	01/14/10				
					CHECKED						
					ISSUED			<div>PART NO.</div> <div>172-Hexnut</div>			
					SHEET	1 OF 1					
					CAD FILE	C:/CONNEX/172-Hexnut.DWG			DWG. NO. 172-Hexnut.DWG		
1	HEX NUT	BRASS	NEXCOTE	1	DO NOT SCALE DRAWING			REV.	NC	SIZE	A
	DESCRIPTION	MATERIAL	FINISH	QTY				SCALE	NA		

Mouser Electronics

Authorized Distributor

Click to View Pricing, Inventory, Delivery & Lifecycle Information:

[Amphenol:](#)

[172-HEXNUT](#)