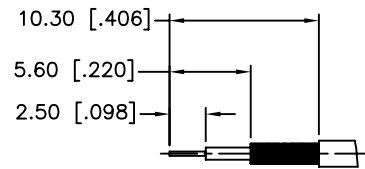
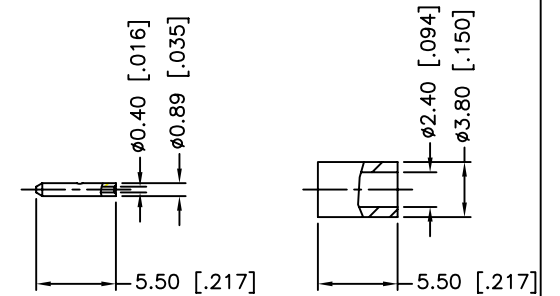
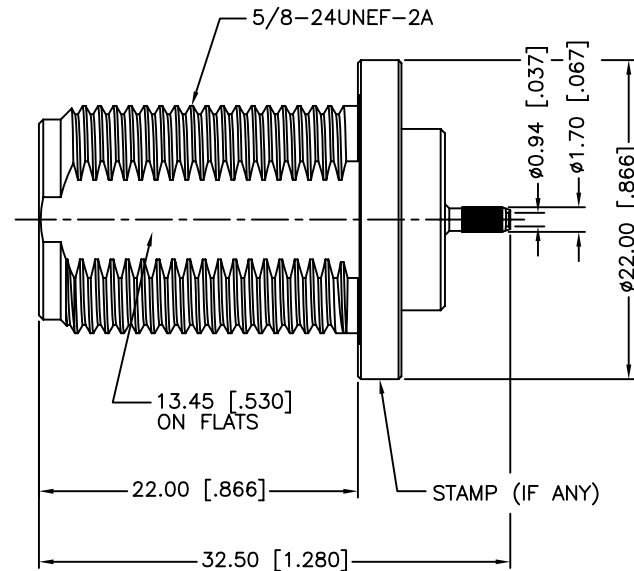
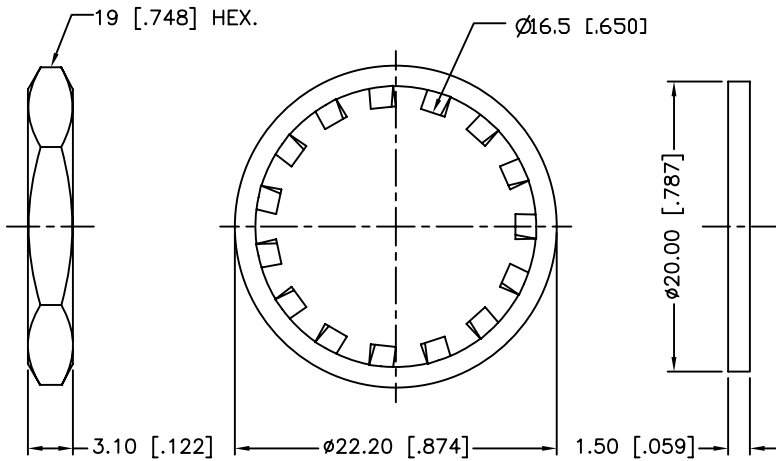
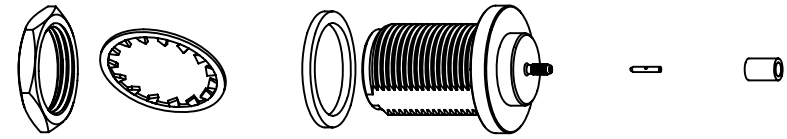


RECOMMENDED
MOUNTING HOLE DIM'S



RECOMMENDED
CABLE STRIPPING DIM'S

REV.	DATE	ECR NO.	DESCRIPTION
NC	04/29/04	XXXXXX	INITIAL RELEASE
A	08/31/12	2359	UPDATE DRAWING FORMAT, IMPROVE ELECTRICAL PERFORMANCE, MODIFY CRIMP TOOL



1. IMPEDANCE: 50 OHM
2. FREQUENCY RANGE: DC - 2.5 GHz
3. VSWR (RETURN LOSS): 1.2 MAX. @ 0-2.5 GHz
1.4 MAX. @ 2.5-6 GHz
4. DIELECTRIC WITHSTANDING VOLTAGE: 1500 VRMS MIN.
5. DURABILITY: 500 CYCLES MIN.
6. TEMPERATURE RANGE: -65°C TO +165°C
7. CRIMPED FERRULE
HEX. CRIMP SIZE .128"
8. CONTACT PIN CAN BE SOLDERED
OR USE 4-WAY INDENT TOOL #47025
9. MAX. PANEL THICKNESS=6.5mm

9	FERRULE	COPPER	NEXCOTE	1	UNLESS OTHERWISE SPECIFIED DIMENSIONS ARE IN MILLIMETERS. DIMENSIONS IN [] ARE IN INCHES AND FOR CUSTOMER REFERENCE ONLY. UNLESS OTHERWISE SPECIFIED TOLERANCES FOR MILLIMETERS ARE: 0.5 – 8mm ± 0.20mm 8 – 30mm ± 0.40mm 30 – 120mm ± 0.50mm UNLESS OTHERWISE SPECIFIED TOLERANCES FOR INCHES ARE: .020 – .315 = ± 0.007" .315 – 1.180 = ± 0.015" 1.180 – 4.724 = ± 0.020"	APPROVALS	DATE	<h1>Amphenol Connex</h1>						
8	CONTACT PIN	BRASS	GOLD	1		DRAWN	M.ZHANG					08/31/12		
7	HEX NUT	BRASS	NEXCOTE	1		CHECKED			PART DESCRIPTION N BULKHEAD CRIMP JACK (FOR RG-178B/U, RG-196A/U CABLE)					
6	LOCK WASHER	BRASS	NEXCOTE	1		ISSUED								
5	GASKET	SILICON RUBBER	RED	1	UNLESS OTHERWISE SPECIFIED TOLERANCES FOR INCHES ARE: .020 – .315 = ± 0.007" .315 – 1.180 = ± 0.015" 1.180 – 4.724 = ± 0.020"	SHEET	1 OF 1		PART NO. 172313					
4	BARREL	BRASS	NEXCOTE	1										
3	CONTACT PIN	PHOSPHOR BRONZE	GOLD	1					DWG. NO. 172313.DWG					
2	INSULATOR	PTFE	NATURAL	1										
1	BODY	BRASS	NEXCOTE	1		CAD FILE	C:/CONNEX/172313.DWG		REV.	A	SIZE	A	SCALE	NA
	DESCRIPTION	MATERIAL	FINISH	QTY	DO NOT SCALE DRAWING									

Mouser Electronics

Authorized Distributor

Click to View Pricing, Inventory, Delivery & Lifecycle Information:

[Amphenol:](#)

[172313](#)