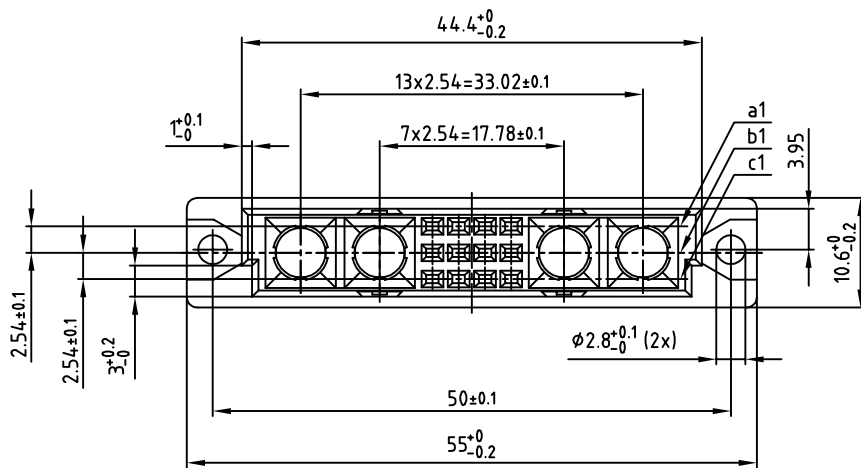
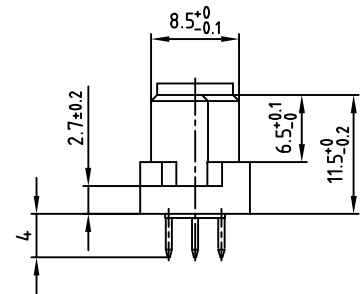
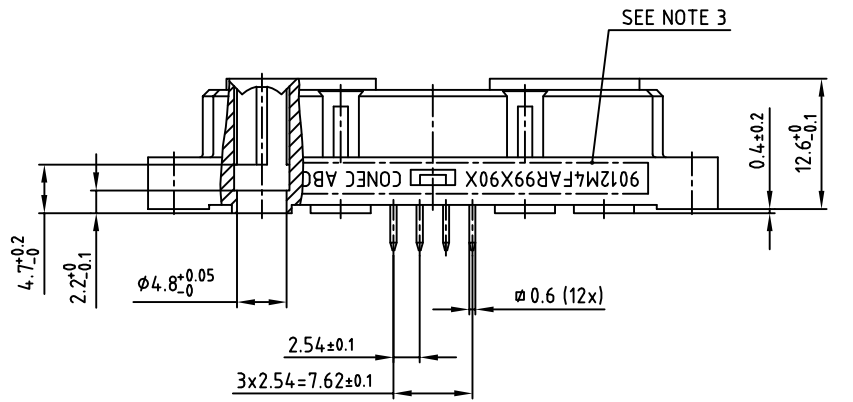


used for: DIN EN 60603 TYPE "M 1/2"



NOTES:

1. INSULATORS: PBT GF UL 94 V-0, GREY

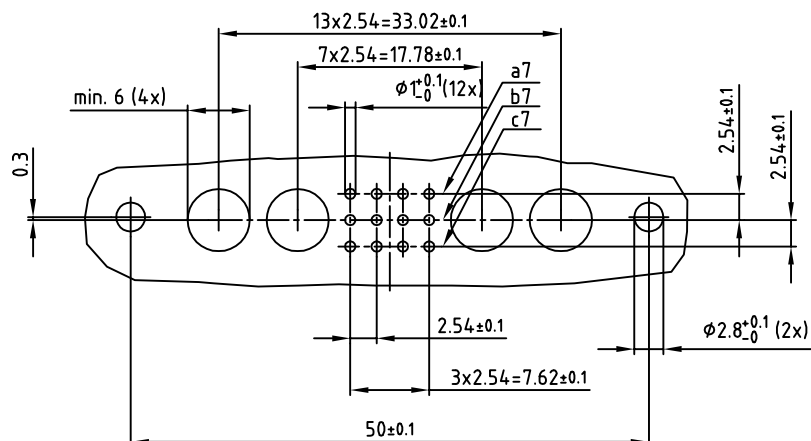
2. SIGNAL CONTACTS: COPPER ALLOY

PLATING: GOLD OVER NICKEL

50 MATING CYCLES

3. CONNECTOR IS PART MARKED: 9012M4FAR99X90X CONEC ABC


P.C.B. HOLE DRILLINGS



APPROVAL * FREIGABE * DEBLOCAGE * AUTOR/ZACION * APPROVAL	
CUSTOMER APPROVAL DATE:	
NAME:	TITLE:
COMPANY NAME:	
APPROVAL * FREIGABE * DEBLOCAGE * AUTOR/ZACION * APPROVAL	

THIS DRAWING MAY NOT BE COPIED OR REPRODUCED IN ANY WAY, AND MAY NOT BE PASSED ON TO A THIRD PARTY, WITHOUT WRITTEN PERMISSION. OWNERSHIP AND COPYRIGHT OF CONEC GmbH DO NOT ALTER CAD DRAWING BY HAND

rev.	description	date	name

tolerance		 dim. in mm
2009	date	
drawn	18.02.	name
appd.	18.02.	Koch
norm	DIN 60603	
d-old		



scale:	2:1	
material:	SEE NOTES	
title:	FEMALE CONNECTOR TYPE "M 1/2" 12+4pos. SOLDER PIN STRAIGHT	
dwg no:	AutoCAD 2006	DIN-A
	12K1A624	3
part no:	9012M4FAR99X90X	
		sh: 1/1

Mouser Electronics

Authorized Distributor

Click to View Pricing, Inventory, Delivery & Lifecycle Information:

[Amphenol:](#)

[9012M4FAR99X90X](#)